



BULK HARDWARE



JOHN DEERE

Table of Contents

HARDWARE MERCHANDISING SOLUTIONS
1.1–1.23

GRADE 8 | FASTENERS
2.1–2.6

GRADE 5 | FASTENERS
3.1–3.10

NON-HARDENED FASTENERS
4.1–4.7

GRADE 10.9 | METRIC FASTENERS
5.1–5.6

GRADE 8.8 | METRIC FASTENERS
6.1–6.6

STAINLESS STEEL | ENGLISH AND METRIC
7.1–7.6

NUTS | ENGLISH AND METRIC
8.1–8.4

WASHERS | ENGLISH AND METRIC
9.1–9.4

PLOW BOLTS AND KITS | GRADES 5 AND 8
10.1–10.4

THREADED ROD
11.1–11.2

LARGE TRAY ASSORTMENTS FOR ON-SITE
STORAGE
12.1–12.2

VALUE KIT ASSORTMENTS
13.1–13.2

TECHNICAL INFORMATION
14.1–14.14

Your Fastener Destination

Why stock and sell John Deere Bulk Hardware?

Bulk hardware offers your dealership the opportunity to retail must-have items that your customers use on a daily basis. Your display floor is enhanced and floor traffic increases as you become the retailer of choice for a variety of customers. Bulk hardware provides incremental sales growth that is simple to buy, simple to stock, and most importantly, simple to sell at competitive prices.

How it works

All sizes in SAE non-hardened, grade 5 and 8, and metric 8.8 and 10.9 are priced and sold **BY THE POUND**:

- Preselected assortments provide simple ordering.
- Bulk hardware is plated for rust resistance, then color coded for simplified product selection and ease of checkout:
 - **Green:** Grade 5
 - **Blue:** Grade 8
 - **Red:** 8.8 Metric
 - **Black:** 10.9 Metric
 - **Silver:** Non-hardened standard hardware and stainless steel
- Attracts new customer segments such as large and small property owners, construction, ag service providers, and commercial.
- Keeps your store competitive, generates repeat business, and keeps your customers from shopping the competition.
- Shipped in bar-coded 5- and 10-pound boxes with John Deere part numbers.
- Extensive, quality product line that meets or exceeds ANSI standards.
- Merchandising systems available (see Merchandising section).

Stainless steel

Commonly used in dairy, sprayer, and consignment applications where corrosion-resistance applications are required.

Merchandising bulk hardware

In store:

- Cube merchandising system:
 - Both English and metric assortments.
- Signage communicates important product specs and retail prices.

On-site storage:

- Metal bin system:
 - Convenient on-site storage of bulk hardware at your customer's farm, ranch, or repair shop.
- Choose from pre-selected assortments or customize your own.

Specialty hardware

Detailed information available in **Parts Advisor**.

Items include:

- Large tray assortments:
 - Heavy-duty metal trays simplify inventory and save valuable storage space for dealers and customers.
- Value kits:
 - Durable plastic box assortments for convenient storage in the shop or field allow customers to easily transport and store matching nuts, bolts and washers, and other assorted items.
- See selections of over 560-plus assortments sold by each in the Specialty Hardware Catalog (DKD10036).

Hardware Merchandising Solutions



Cube Merchandising System

These attractive self-service displays maximize product exposure for increased sales.



This system's modular design allows for easy expansion to meet future inventory needs and can be assembled up to five units high to maximize floor space. Interlocking six-drawer cubes may be stacked back-to-back, along a wall, or in an island display. (See display options on pages 1.5–1.12.)

Our English and metric cube-system kits deliver eye-grabbing graphics and customer-friendly features, including:



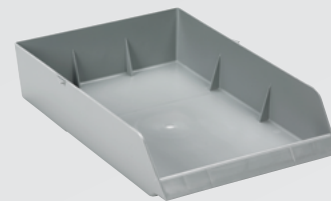
Aisle talker, side-panel, and overhead signage help direct your customers in finding the products they need. (See page 1.15–1.16 for more details.)



Inch or metric bolt gauges guarantee the right fit. (See page 1.14 for more details.)



Color-coded drawer labels provide detailed product information. (See page 1.13 for more details.)



Durable, pullout drawers are ideal for easy inventory control. (See page 1.13 for more details.)



Plastic bags and dispenser provide ease and accuracy at checkout. (See page 1.14 for more details.)

Standard Cube Merchandising System — Three Optional Setups — Four Cubes High

English

288 Drawers | 281 English | 7 Empty
Display with 5 English Assortments: PM15539

Qty.	Description	Part No.
48	Cube	PM17996
6	Double base	PM17974
1	Inch bolt gauge	PM89987
1	Metric bolt gauge	PM89986
2	Side-panel sign, Hardware Headquarters	PM15697
2	Side-panel sign, pricing sign, and category stickers	PM15698
2	Top sign, Hardware Headquarters	PM15699
2	Top sign, bolt selection guide, English	PM15700
1	Plastic bags, 100	PM15471
1	Plastic bag dispenser	PM17970
1	Grade 5, A assortment (see page 3.6)	PM15495
1	Grade 5, B assortment (see page 3.8)	PM15496
1	Grade 5, carriage assortment (see page 3.10)	PM15497
1	Grade 8, A assortment (see page 2.4)	PM15498
1	Grade 8, B assortment (see page 2.5)	PM15499
1	Drawer labels	Included

Metric

288 Drawers | 259 Metric | 29 Empty
Display with 6 Metric Assortments: PM15541

Qty.	Description	Part No.
48	Cube	PM17996
6	Double base	PM17974
1	Inch bolt gauge	PM89987
1	Metric bolt gauge	PM89986
2	Side-panel sign, Hardware Headquarters	PM15697
2	Side-panel sign, pricing sign, and category stickers	PM15698
2	Top sign, Hardware Headquarters	PM15699
2	Top sign, bolt selection guide, metric	PM15701
1	Plastic bags, 100	PM15471
1	Plastic bag dispenser	PM17970
1	Metric 8.8, A assortment (see page 6.4)	PM15477
1	Metric 8.8, B assortment (see page 6.5)	PM15478
1	Metric 8.8, carriage assortment (see page 6.6)	PM15479
1	Metric 10.9, flange assortment (see page 5.6)	PM15486
1	Metric 10.9, A assortment (see page 5.4)	PM15487
1	Metric 10.9, B assortment (see page 5.5)	PM15488
1	Drawer labels	Included



Note: Each individual cube is 12-in. wide x 12 $\frac{1}{2}$ -in. high, and 16-in. deep, and can be customized to fit your needs. Each drawer is capable of holding 10-lb. of product.

PM17996
2 sq. ft.
H 12 $\frac{1}{2}$ in. | W 12 in. | D 16 in.

Dealer Display Options for Standard Cube (288 Drawers)

Dealers can display English or Metric cubes and create one of three configurations as shown below.

PM15539 (English)
PM15541 (Metric)
19 sq. ft.
H 4 ft. 3 in. | W 4 ft. 8 in. | D 4 ft.



PM15539 (English)
PM15541 (Metric)
16 sq. ft.
H 4 ft. 3 in. | W 2 ft. 8 in. | D 6 ft.



PM15539 (English)
PM15541 (Metric)
16 sq. ft.
H 4 ft. 3 in. | W 1 ft. 4 in. | D 12 ft.

Standard Cube Merchandising System – Three Optional Setups – Five Cubes High

English

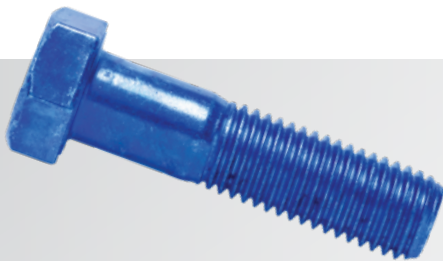
300 Drawers | 281 English | 19 Empty
Display with 5 English Assortments: PM15542

Qty.	Description	Part No.
50	Cube	PM17996
4	Double base	PM17974
2	Single base	PM17971
1	Inch bolt gauge	PM89987
1	Metric bolt gauge	PM89986
2	Side-panel sign, Hardware Headquarters	PM15697
2	Side-panel sign, pricing sign, and category stickers	PM15698
2	Top sign, Hardware Headquarters	PM15699
2	Top sign, bolt selection guide, English	PM15700
1	Plastic bags, 100	PM15471
1	Plastic bag dispenser	PM17970
1	Grade 5, A assortment (see page 3.6)	PM15495
1	Grade 5, B assortment (see page 3.8)	PM15496
1	Grade 5, carriage assortment (see page 3.10)	PM15497
1	Grade 8, A assortment (see page 2.4)	PM15498
1	Grade 8, B assortment (see page 2.5)	PM15499
1	Drawer labels	Included

Metric

300 Drawers | 259 Metric | 41 Empty
Display with 6 Metric Assortments: PM15543

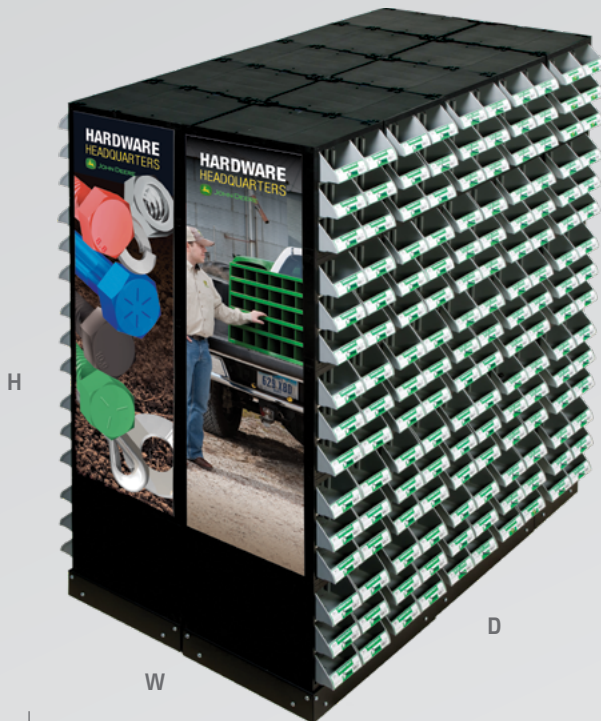
Qty.	Description	Part No.
50	Cube	PM17996
4	Double base	PM17974
2	Single base	PM17971
1	Inch bolt gauge	PM89987
1	Metric bolt gauge	PM89986
2	Side-panel sign, Hardware Headquarters	PM15697
2	Side-panel sign, pricing sign, and category stickers	PM15698
2	Top sign, Hardware Headquarters	PM15699
2	Top sign, bolt selection guide, metric	PM15701
1	Plastic bags, 100	PM15471
1	Plastic bag dispenser	PM17970
1	Metric 8.8, A assortment (see page 6.4)	PM15477
1	Metric 8.8, B assortment (see page 6.5)	PM15478
1	Metric 8.8, carriage assortment (see page 6.6)	PM15479
1	Metric 10.9, flange assortment (see page 5.6)	PM15486
1	Metric 10.9, A assortment (see page 5.4)	PM15487
1	Metric 10.9, B assortment (see page 5.5)	PM15488
1	Drawer labels	Included



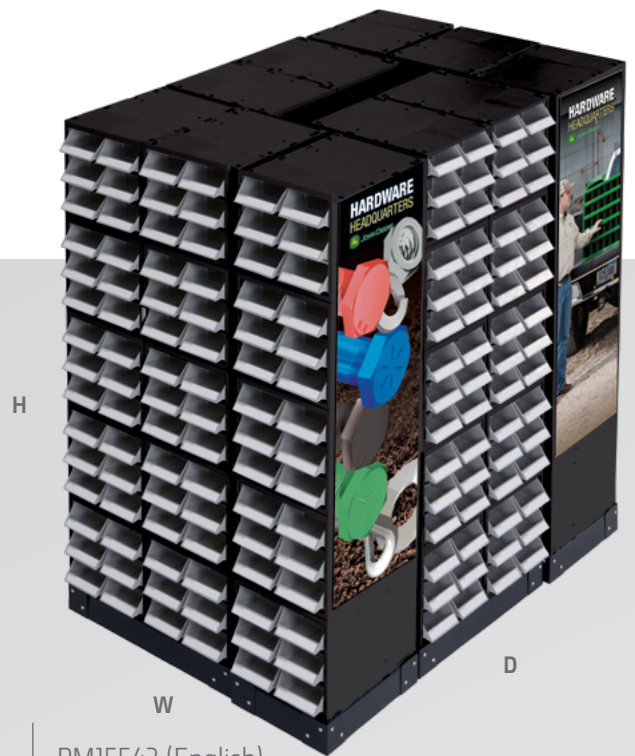
Note: Bulk hardware meets ANSI specifications for hardness, tensile strength, and proof load. This product can be used for the warranty repairs of John Deere equipment.

Dealer Display Options for Standard Cube (300 Drawers)

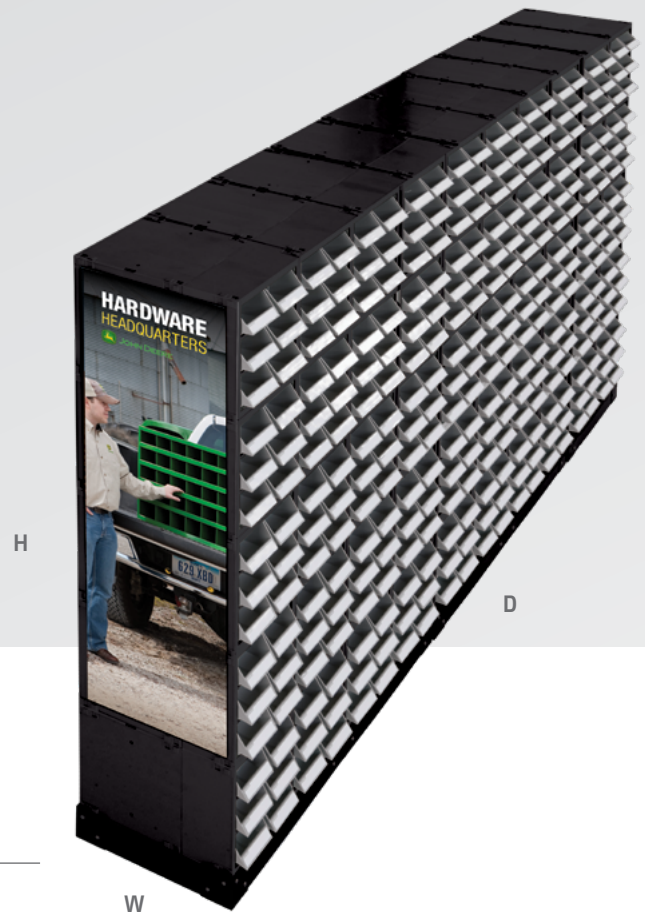
Dealers can display English or Metric cubes and create one of three configurations as shown below.



PM15542 (English)
PM15543 (Metric)
13 sq. ft.
H 5 ft. 3 in. | W 2 ft. 8 in. | D 5 ft.



PM15542 (English)
PM15543 (Metric)
14 sq. ft.
H 5 ft. 3 in. | W 3 ft. | D 4 ft. 8 in.



PM15542 (English)
PM15543 (Metric)
13 sq. ft.
H 5 ft. 3 in. | W 1 ft. 4 in. | D 10 ft.

Mini Mega Merchandising System – Two Optional Setups – Four Cubes High and Flat

426 Drawers | 233 English | 193 Metric
Display with 8 Assortments
(5 English and 6 Metric): PM15800

Qty.	Description	Part No.
40	16-in. cube	PM17996
147	16-in. divider	PM17974
252	6-in. cross divider	PM17919
2	Single base	PM17971
4	Double base	PM17974
1	Metric bolt gauge	PM89986
1	Inch bolt gauge	PM89987
1	Grade 5 assortment A (see page 3.6)	PM15495
1	Grade 5 assortment B (see page 3.8)	PM15496
1	Gr 5 carriage assortment (see page 3.10)	PM15497
1	Grade 8 assortment A (see page 2.4)	PM15498
1	Grade 8 assortment B (see page 2.5)	PM15499
1	Metric 8.8 top sellers	
1	Metric 10.9 hex top sellers	
1	Metric 10.9 flange top sellers	
1	Top sign Eng/Met sign	PM15699
1	Producer side panel sign	PM15698
1	Side panel sign	PM15697
1	100-count	PM15471
1	Plastic bag	PM17970
1	Drawer labels	Included



PM15800
26 sq. ft.
H 5 ft. 3 in. | W 3 ft. | D 8 ft. 8 in.

Mini Mega Plus Merchandising System – Two Optional Setups – Four Cubes High and Flat

**456 Drawers | 233 English | 193 Metric | 30 Speciality
Display with 8 Assortments
(5 English and 6 Metric): PM15801**

Qty.	Description	Part No.
42	16-in. cube	PM17996
6	12-in. cube	PM17821
135	Inch bolt gauge	PM17921
252	6-in. cross divider	PM17919
4	Single base	PM17971
6	Double base	PM17974
1	Metric bolt gauge	PM89986
1	Inch bolt gauge	PM89987
1	Grade 5 assortment A (see page 3.6)	PM15495
1	Grade 5 assortment B (see page 3.8)	PM15496
1	Gr 5 carriage assortment (see page 3.10)	PM15497
1	Grade 8 assortment A (see page 2.4)	PM15498
1	Grade 8 assortment B (see page 2.5)	PM15499
1	Metric 8.8 top sellers	
1	Metric 10.9 hex top sellers	
1	Metric 10.9 flange top sellers	
1	Top sign Eng/Met sign	PM15699
1	Producer side panel sign	PM15698
1	Side panel sign	PM15697
1	100-count	PM15471
1	Plastic bag	PM17970
1	Drawer labels	Included



PM15801

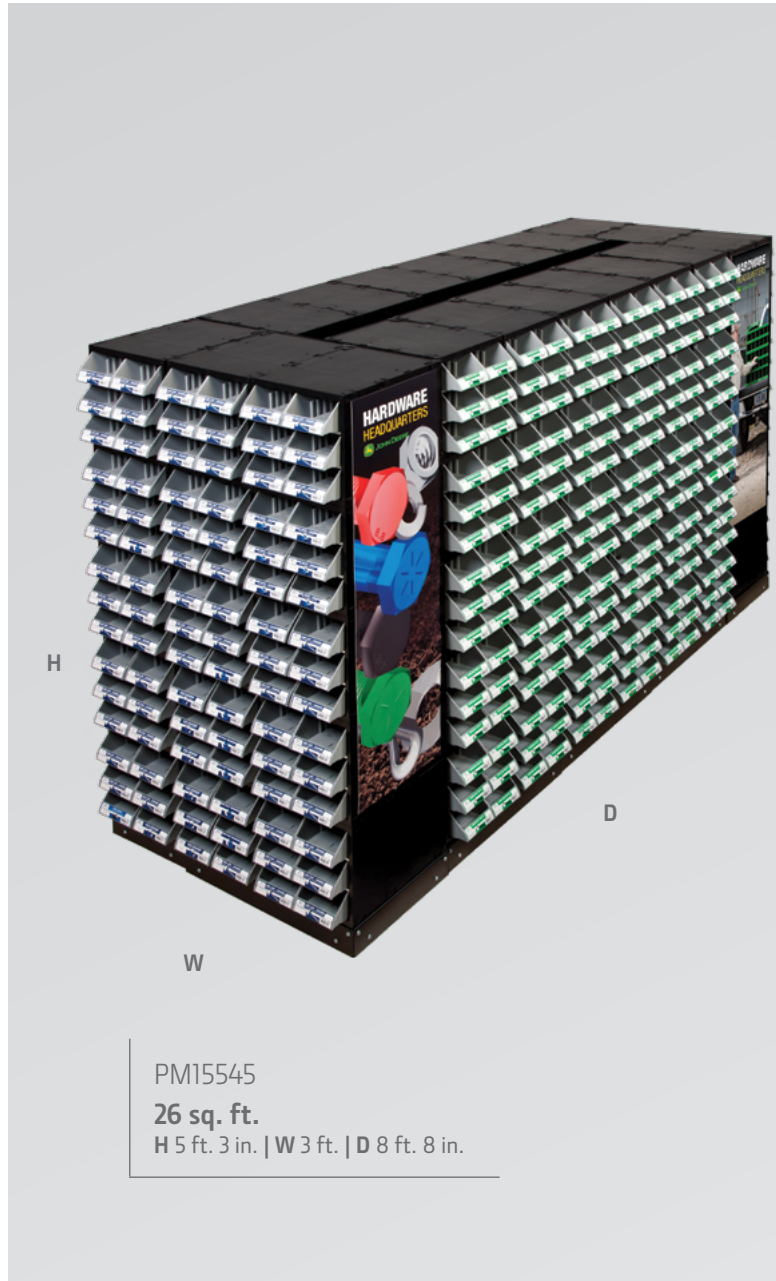
26 sq. ft.

H 5 ft. 3 in. | W 3 ft. | D 8 ft. 8 in.

Mega Cube Merchandising System — Three Optional Setups — Five Cubes High

540 Drawers | 281 English | 259 Metric | 0 Empty
Display with 11 Assortments
(5 English and 6 Metric): PM15545

Qty.	Description	Part No.
90	Cube	PM17996
8	Double base	PM17974
2	Single base	PM17971
1	Inch bolt gauge	PM89987
1	Metric bolt gauge	PM89986
2	Side-panel sign, Hardware Headquarters	PM15697
2	Side-panel sign, pricing sign, and category stickers	PM15698
4	Top sign, Hardware Headquarters	PM15699
2	Top sign, bolt selection guide, English	PM15700
2	Top sign, bolt selection guide, metric	PM15701
2	Plastic bags, 100	PM15471
2	Plastic bag dispenser	PM17970
1	Grade 5, A assortment (see page 3.6)	PM15495
1	Grade 5, B assortment (see page 3.8)	PM15496
1	Grade 5, carriage assortment (see page 3.10)	PM15497
1	Grade 8, A assortment (see page 2.4)	PM15498
1	Grade 8, B assortment (see page 2.5)	PM15499
1	Metric 8.8, A assortment (see page 6.4)	PM15483
1	Metric 8.8, B assortment (see page 6.5)	PM15484
1	Metric 8.8, carriage assortment (see page 6.6)	PM15485
1	Metric 10.9, flange assortment (see page 5.6)	PM15486
1	Metric 10.9, A assortment (see page 5.4)	PM15487
1	Metric 10.9, B assortment (see page 5.5)	PM15488
1	Drawer labels	Included



Dealer Display Options for Mega Cube (540 Drawers)

Dealers can display cubes and create one of two configurations as shown below.



PM15545

24 sq. ft.

H 5 ft. 3 in. | W 2 ft. 8 in. | D 9 ft.



PM15545

24 sq. ft.

H 5 ft. 3 in. | W 1 ft. 4 in. | D 18 ft.

Mega Cube Merchandising System — Three Optional Setups — Four Cubes High

576 Drawers | 281 English | 259 Metric | 36 Empty
Display with 11 Assortments
(5 English and 6 Metric): PM15544

Qty.	Description	Part No.
96	Cube	PM17996
12	Double base	PM17974
1	Inch bolt gauge	PM89987
1	Metric bolt gauge	PM89986
2	Side-panel sign, Hardware Headquarters	PM15697
2	Side-panel sign, pricing sign, and category stickers	PM15698
4	Top sign, Hardware Headquarters	PM15699
2	Top sign, bolt selection guide, English	PM15700
2	Top sign, bolt selection guide, metric	PM15701
2	Plastic bags, 100	PM15471
2	Plastic bag dispenser	PM17970
1	Grade 5, A assortment (see page 3.6)	PM15495
1	Grade 5, B assortment (see page 3.8)	PM15496
1	Grade 5, carriage assortment (see page 3.10)	PM15497
1	Grade 8, A assortment (see page 2.4)	PM15498
1	Grade 8, B assortment (see page 2.5)	PM15499
1	Metric 8.8, A assortment (see page 6.4)	PM15483
1	Metric 8.8, B assortment (see page 6.5)	PM15484
1	Metric 8.8, carriage assortment (see page 6.6)	PM15485
1	Metric 10.9, flange assortment (see page 5.6)	PM15486
1	Metric 10.9, A assortment (see page 5.4)	PM15487
1	Metric 10.9, B assortment (see page 5.5)	PM15488
1	Drawer labels	Included



PM15544

47 sq. ft.

H 4 ft. 3 in. | W 4 ft. 8 in. | D 10 ft.

Dealer Display Options for Mega Cube (576 Drawers)

Dealers can display cubes and create one of two configurations as shown below.



PM15544

24 sq. ft.

H 5 ft. 3 in. | W 2 ft. 8 in. | D 9 ft.



PM15544

24 sq. ft.

H 5 ft. 3 in. | W 1 ft. 4 in. | D 18 ft.

Cube Display Components and Accessories

Cube displays come standard with six-drawer cubes, bags and dispenser, required bases, and bolt gauges. Order additional components to customize as needed to meet the needs of your dealership and your customers.

Drawer Label

Part No.:
 PM05883 Green
 PM06338 Red
 PM06499 Gray
 PM050158 Blue



Six-Drawer Cube

Part No.: PM17996
 Dimensions: 12-in. (W)
 x 12 $\frac{1}{2}$ -in. (H) x 16-in. (D)
 Capacity:
 10-lb. per drawer



Mega Drawer

Part No.: PM17897
 Fits in six-drawer cube



Vertical Bin Divider (long)

Part No.: PM17021
 Dimensions: 6-in. (W) x 2-in. (H)
 Image not shown

Horizontal Bin Divider (short)

Part No.: PM17919
 Dimensions: 16-in. (W) x 2-in. (H)
 Image not shown

Two-Cube Base

Part No.: PM17974
 Dimensions: 24-in. (W)
 x 6-in. (H) x 16-in. (D)

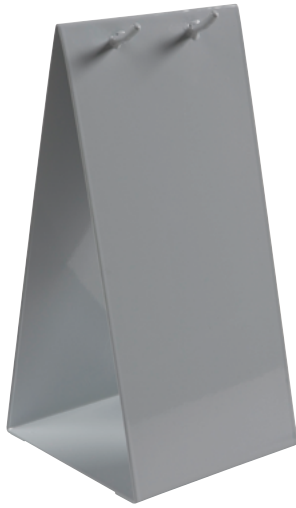


Single-Cube Base

Part No.: PM17971
 Dimensions: 12-in. (W)
 x 6-in. (H) x 16-in. (D)



Bulk Hardware Sales Tools



PM17970



PM15471

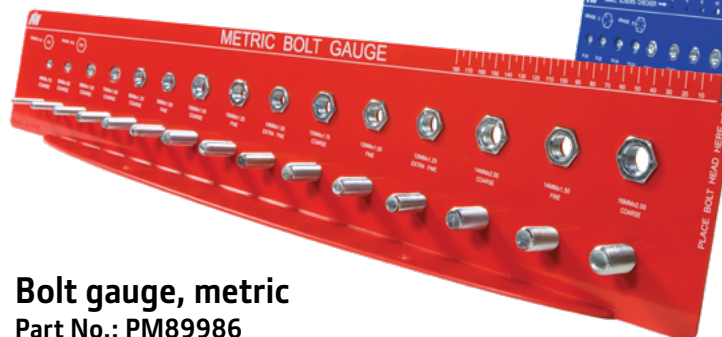
Plastic Bags and Dispenser

- Increase accuracy at checkout.
- 5-inch (W) x 9-inch (H) bags.

Description	Part No.
Plastic bags, 100 per pad	PM15471
Dispenser	PM17970

Bolt Gauges

Eliminate the guesswork of matching fastener sizes. Use these convenient gauges to accurately measure the diameter, length, and thread pitch of your fasteners.



Bolt gauge, metric
Part No.: PM89986



Bolt gauge, inch
Part No.: PM89987



SW-50

Digital Scale

Part No.: SW-50

- Battery operated with auto power-off feature.
- AC adapter included.
- Large one-inch (25 mm) display.
- Switch between units (pound, ounce, kilogram, and gram).
- Soft-touch tack switch.
- Stainless steel platter.
- Compact, easy-to-use design.
- Zero, net, stable, and low-battery indicators.
- Special order only. Not included with preselected assortments.

Ordering and additional information:

Rogan Scale

3255 Fields Drive
Bettendorf, IA 52722

Phone: 800-798-6007

E-mail: sales@roganscale.com

Promotional Signage for Cube Merchandising Systems

Side-Panel Signs

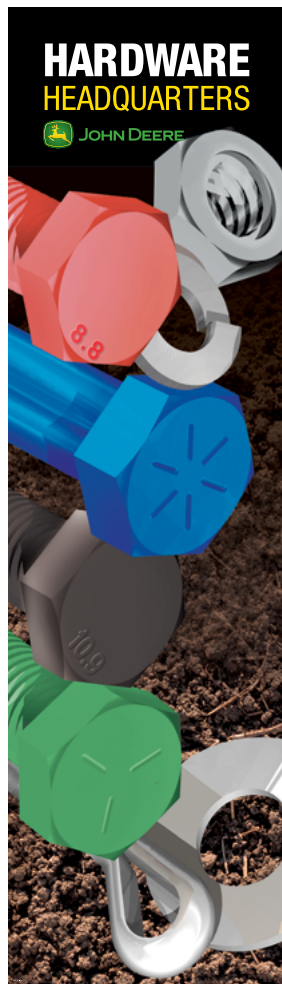
Dimensions: 14-in. (W) x 50-in. (H)

May be mounted on the sides of the cube merchandising system.

Description	Part No.
Side-panel sign (English and metric)	PM15697
Side-panel pricing sign (English and metric) and category labels	PM15698
Category labels	PM15696



PM15698



PM15697

Top Signs

Dimensions: 36-in. (W) x 9-in. (H)

May be displayed on top of the 360-degree cube merchandising system or mounted above a wall display.

Description	Part No.
Top sign (English and metric)	PM15699
Top sign (English)	PM15700
Top sign (metric)	PM15701



PM15699



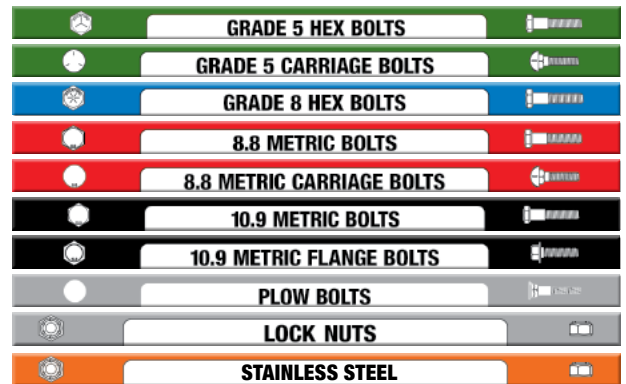
PM15700



PM15701

Cube Labels

Description	Part No.
Grade 5	PM15705
Grade 8	PM15706
Grade 5 carriage	PM15708
Lock nuts	PM15710
8.8 metric	PM15709
8.8 metric carriage	PM15707
10.9 metric	PM15703
10.9 metric flange	PM15704
Plow bolts	PM15711
Stainless steel	PM99644



Aisle Talkers

Dimensions: 5-in. (W) x 24-in. (H)

Our eye-catching polystyrene “aisle talkers” and overhead signage help direct your customers in finding the products they need. Color coded and complete with large fastener graphics, these aisle talkers can cut down on the in-aisle sales help required.



Metal-Bin Assortments for On-Site Storage

72-Hole Storage Bin

Part No.: PM15462

Dimensions: 36-in. (W) x 12-in. (D) x 42-in. (H)



Metal-Bin Storage System for Bulk Hardware

- Convenient on-site storage option for farmers, ranchers, municipalities, truck fleets, bus barns, repair bays, commercial shops, and more.
- Heavy-duty metal bins hold up to 560 pounds of hardware.
- Baked-enamel finish is rust and acid resistant.
- For assortment contents see specific grade section of catalog.

40-Hole Storage Bin

Part No.: PM15463

Dimensions: 36-in. (W)
x 12-in. (D) x 21½-in. (H)



Preselected Hardware Assortments

Base for 40- and 72-Hole Storage Bins

Part No.: PM15464

Dimensions: 36-in. (W) x 12-in. (D) x 4½-in. (H)



Note: Customized Assortments
A separate brochure is available to help you promote metal-bin bulk hardware assortments to your customers. Order brochure DSPB50265 from DSC.



English

Metric

Grade 5 hex, ¼-½-in. dia. **Part No.** PM15472 (see page 3.6). **Sizes in assortment:** 99. **Metal bins included:** 40- and 72-hole.

Grade 8.8 hex, M6–M12 dia. **Part No.** PM15477 (see page 6.4). **Sizes in assortment:** 70. **Metal bins included:** 72-hole.

Grade 5 hex, ¼-½-in. dia. **Part No.** PM15473 (see page 3.8). **Sizes in assortment:** 36. **Metal bins included:** 40-hole.

Grade 8.8 hex, M16 dia. **Part No.** PM15478 (see page 6.5). **Sizes in assortment:** 19. **Metal bins included:** 40-hole.

Grade 5 carriage, ¼-½-in. dia. **Part No.** PM15474 (see page 3.10). **Sizes in assortment:** 36. **Metal bins included:** 40-hole.

Grade 8.8 carriage, M6–M16 dia. **Part No.** PM15479 (see page 6.6). **Sizes in assortment:** 34. **Metal bins included:** 40-hole.

Grade 8 hex, ¼-½-in. dia. **Part No.** PM15475 (see page 2.4). **Sizes in assortment:** 70. **Metal bins included:** 72-hole.

Grade 10.9 flange, M6–M12 dia. **Part No.** PM15480 (see page 5.6). **Sizes in assortment:** 40. **Metal bins included:** 40-hole.

Grade 8 hex, ¼-½-in. dia. **Part No.** PM15476 (see page 2.5). **Sizes in assortment:** 25. **Metal bins included:** 40-hole.

Grade 10.9 hex, M6–M12 dia. **Part No.** PM15481 (see page 5.4). **Sizes in assortment:** 58. **Metal bins included:** 72-hole.

Grade 10.9 hex, M16–M20 dia. **Part No.** PM15482 (see page 5.5). **Sizes in assortment:** 32. **Metal bins included:** 40-hole.

Bulk Stainless Steel

Stainless Add-on Display

Part No.: PM15348

Dimensions: 4-in. (W) x 58-in. (H) x 16-in. (D)

- 118 bulk part numbers
- 25 specialty stainless assortments
- Bulk sold by pound
- Specialty sold by each
- Purple Bag roll included (PMMF17711)
- Base included



Specialty Hardware

Merchandisers

- Available in preselected assortments.
- 563 assortments available, each drawer is an assortment.
- Order assortments in multiples of five to receive the cabinet free.
- Product is sold by the piece; individual components within tray make it easy to shop and checkout.



Note: Customized Assortments
A separate brochure is available to help you promote Specialty Hardware to your customers. Order brochure DKD10036 from DSC.

Grade 8 Fasteners

MEETS OR EXCEEDS SAE J429 STANDARDS
HIGHEST SAE STANDARD FOR HEX HEAD CAP SCREWS
SPECIFICATIONS, MINIMUM
TENSILE STRENGTH – 150,000 psi
PROOF LOAD – 120,000 psi

Grade 8 Bolts – Hex Coarse Thread / Color: BLUE

Grade 8 fasteners are required for critical fastening applications and are medium carbon-alloy steel fasteners that have been quenched, then tempered for tensile strength and hardness. They are identified by six radial lines and the **manufacturer's head marking**.

**All bulk Grade 8 fasteners ship in 5-lb. packages.*



***Note:** Bulk hardware meets ANSI specifications for hardness, tensile strength, and proof load. This product can be used for the warranty repairs of John Deere equipment.*

Grade 8 Fasteners

Grade 8 Bolts — Hex Coarse Thread / Color: BLUE



*All bulk Grade 8 fasteners ship in 5-lb. packages.

Size	Part No.	Pcs. per lb.
½-13 x 8	PM06319	2
⅝-11 x 1	PM06125	7
⅝-11 x 1½	PM06126	6
⅝-11 x 1¾	PM06320	5
⅝-11 x 2	PM06127	5
⅝-11 x 2¼	PM06321	4
⅝-11 x 2½	PM06128	4
⅝-11 x 3	PM06129	3
⅝-11 x 3½	PM06130	3
⅝-11 x 4	PM06131	3
⅝-11 x 4½	PM06322	2
⅝-11 x 5	PM06132	2
⅝-11 x 6	PM06133	2
⅝-11 x 8	PM06323	1
¾-10 x 1½	PM06134	3
¾-10 x 2	PM06135	3
¾-10 x 2½	PM06136	3
¾-10 x 3	PM06137	2
¾-10 x 3½	PM06138	2
¾-10 x 4	PM06139	2
¾-10 x 4½	PM06324	2
¾-10 x 5	PM06140	1
¾-10 x 5½	PM06325	1
¾-10 x 6	PM06141	1
¾-10 x 6½	PM06326	1
¾-10 x 7	PM06327	1
¾-10 x 8	PM06328	1
⅞-9 x 2	PM06636	2

Size	Part No.	Pcs. per lb.
⅞-9 x 2½	PM06637	2
⅞-9 x 3	PM06638	2
⅞-9 x 3½	PM06639	1
⅞-9 x 4	PM06640	1
⅞-9 x 4½	PM06641	1
⅞-9 x 5	PM06642	1
⅞-9 x 5½	PM06643	1
⅞-9 x 6	PM06644	1
⅞-9 x 7	PM06645	1
⅞-9 x 8	PM06646	1
⅞-9 x 9	PM06647	1
⅞-9 x 10	PM06648	1
⅞-9 x 12	PM06649	1
1-8 x 2	PM06650	2
1-8 x 2½	PM06651	1
1-8 x 3	PM06652	1
1-8 x 3½	PM06653	1
1-8 x 4	PM06654	1
1-8 x 4½	PM06655	1
1-8 x 5	PM06656	1
1-8 x 5½	PM06657	1
1-8 x 6	PM06658	1
1-8 x 7	PM06659	1
1-8 x 8	PM06660	1
1-8 x 9	PM06661	1
1-8 x 10	PM06662	1
1-8 x 12	PM06663	1

Grade 8 Bolts — Hex Color: YELLOW ZINC



*Shipped in a box quantity package as indicated in the table.

Size	Part No.	Pcs. per box.
1-⅛-7 x4	PM54149	2
1-⅛-7 x5	PM54150	2
1-⅛-7 x6	PM54151	2
1-⅛-7 x8	PM54152	2
1-⅛-7 x10	PM54153	2
1-⅛-7 x12	PM54154	2
1-¼-7 x4	PM54155	2
1-¼-7 x5	PM54156	2
1-¼-7 x6	PM54157	2

Size	Part No.	Pcs. per box.
1-¼-7 x8	PM54158	2
1-¼-7 x10	PM54159	2
1-¼-7 x12	PM54160	2
1-½-7 x4	PM54161	2
1-½-7 x5	PM54162	2
1-½-7 x6	PM54163	2
1-½-7 x8	PM54164	2
1-½-7 x10	PM54165	2
1-½-7 x12	PM54166	2

Grade 8 Nuts – Hex Coarse Thread / Color: BLUE

High-strength alloy steel for critical application. Should be used with Grade 8 hex bolts.

**All bulk Grade 8 fasteners ship in 5-lb. packages.*



Size	Part No.	Pcs. per lb.	Width AF	Height
¼–20	PM06142	146	7/16	7/32
5/16–18	PM06143	98	½	17/64
3/8–16	PM06144	68	9/16	21/64
7/16–14	PM06145	37	1 1/16	3/8
½–13	PM06146	28	¾	7/16
5/8–11	PM06147	14	1 5/16	35/64
¾–10	PM06148	9	1 ½	41/64
7/8–9	PM06664	5	1 5/16	¾
1–8	PM06667	4	1 ½	55/64

Color: YELLOW ZINC

Size	Part No.	Pcs. per box	Width AF	Height
¾–10	PM06148	9	1 ½	41/64
7/8–9	PM06664	5	1 5/16	¾
1–8	PM06667	4	1 ½	55/64

Grade 8 Flat Washers – SAE Color: BLUE

Hardened and tempered. For use with Grade 8 hex bolts.

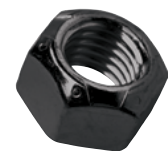
**All bulk Grade 8 fasteners ship in 5-lb. packages.*



Size	Part No.	Pcs. per lb.	I.D.	O.D.	Thickness
¼	PM06149	243	0.281	0.625	0.065
5/16	PM06150	215	0.344	0.688	0.065
3/8	PM06151	170	0.406	0.812	0.065
7/16	PM06152	111	0.469	0.922	0.065
½	PM06153	68	0.531	1.062	0.095
5/8	PM06154	33	0.656	1.312	0.095
¾	PM06155	26	0.812	1.469	0.134

Grade 8 (Grade C) Lock Nuts – Prevailing Torque Coarse Thread / Color: BLACK

**All bulk Grade 8 fasteners ship in 5-lb. packages.*



Size	Part No.	Pcs. per lb.	Width AF	Height
¼–20	PM06670	150	7/16	0.145
5/16–18	PM06671	102	½	0.166
3/8–16	PM06672	61	9/16	0.198
7/16–14	PM06673	38	1 1/16	0.223
½–13	PM06674	29	¾	0.262
5/8–11	PM06675	15	1 5/16	0.329
¾–10	PM06676	10	1 ½	0.382
7/8–9	PM06677	6	1 5/16	0.450
1–8	PM06678	4	1 ½	0.513

Grade 8 Flat Washers – USS Color: BLUE

Hardened and tempered. For use with Grade 8 hex bolts.

**All bulk Grade 8 fasteners ship in 5-lb. packages.*



Size	Part No.	Pcs. per lb.	I.D.	O.D.	Thickness
¼	PM06329	134	0.312	0.734	0.065
5/16	PM06330	78	0.375	0.875	0.083
3/8	PM06331	60	0.438	1.000	0.083
7/16	PM06332	37	0.500	1.250	0.083
½	PM06333	23	0.562	1.375	0.109
5/8	PM06334	12	0.688	1.750	0.134
¾	PM06335	8	0.812	2.000	0.148
7/8	PM06665	8	0.938	2.250	0.165
1	PM06668	7	1.062	2.500	0.165

Color: YELLOW ZINC

**Shipped in a box quantity package as indicated in the table.*

Size	Part No.	Pcs. per box	I.D.	O.D.	Thickness
1 1/8	PM54173	5	2.739	1.275	0.158
1 1/4	PM54174	5	3.193	1.576	0.343
1 1/2	PM54175	5	3.494	1.622	0.164

Grade 8 Lock Washers – Split Color: BLUE

Hardened. For use with Grade 8 hex bolts.

**All bulk Grade 8 fasteners ship in 5-lb. packages.*



Size	Part No.	Pcs. per lb.	I.D.	O.D.	Thickness
¼	PM06156	472	0.262	0.489	0.020
5/16	PM06157	248	0.326	0.586	0.078
3/8	PM06158	161	0.390	0.683	0.094
7/16	PM06159	113	0.455	0.779	0.109
½	PM06160	77	0.518	0.873	0.125
5/8	PM06161	45	0.650	1.079	0.156
¾	PM06162	27	0.775	1.271	0.188
7/8	PM06666	18	0.905	1.454	0.219
1	PM06669	12	1.042	1.661	0.250

Color: YELLOW ZINC

Size	Part No.	Pcs. per box	I.D.	O.D.	Thickness
1 1/8	PM54170	5	1.742	1.181	0.206
1 1/4	PM54172	5	2.582	1.697	0.595

Grade 8 Thick Flat Washers – USS Color: YELLOW ZINC

Hardened. For use with Grade 8 hex bolts.

**All bulk Grade 8 fasteners ship in 5-lb. packages.*



Size	Part No.	Pcs. per lb.	I.D.	O.D.	Thickness
¼	PM55376	140	0.73	0.319	0.083
5/16	PM55377	90	0.878	0.385	0.091
3/8	PM55378	72	0.995	0.454	0.09
7/16	PM55379	40	1.25	0.51	0.095
½	PM55380	24	1.377	0.56	0.14
5/8	PM55381	20	1.475	0.628	0.142

Grade 8 Hex Bolt Assortment

¼–½-in. Diameter “A” Assortment

Coarse Thread / Color: BLUE

Grade 8 “A” Assortment Part No. PM15475 includes all the parts listed below, 72-hole metal bin (pictured), and labels. Metal base Part No. PM15464 is optional.



Grade 8 “A” Assortment “Hardware only” Part No. PM15498

**All bulk Grade 8 fasteners ship in 5-lb. packages.*

Size	Part No.	Pcs. per lb.
72-hole metal bin	PM15462	1
Labels	Included	1
¼–20 x ½	PM06079	84
¼–20 x ¾	PM06080	70
¼–20 x 1	PM06081	54
¼–20 x 1¼	PM06082	49
¼–20 x 1½	PM06083	42
¼–20 x 1¾	PM06298	36
¼–20 x 2	PM06084	33
¼–20 x 2½	PM06085	27
¼–20 x 3	PM06086	23
¼–20 x 4	PM06087	17
⅝–18 x ½	PM06088	51
⅝–18 x ¾	PM06089	43
⅝–18 x 1	PM06090	36
⅝–18 x 1¼	PM06091	31
⅝–18 x 1½	PM06092	27
⅝–18 x 1¾	PM06299	12
⅝–18 x 2	PM06093	21
⅝–18 x 2½	PM06094	17
⅝–18 x 3	PM06095	14
⅝–18 x 3½	PM06096	12
⅝–18 x 4	PM06097	11
⅜–16 x ½	PM06098	35
⅜–16 x ¾	PM06099	29
⅜–16 x 1	PM06100	25
⅜–16 x 1¼	PM06101	22
⅜–16 x 1½	PM06102	18
⅜–16 x 1¾	PM06302	16
⅜–16 x 2	PM06103	14
⅜–16 x 2¼	PM06303	13
⅜–16 x 2½	PM06104	12
⅜–16 x 3	PM06105	10
⅜–16 x 3½	PM06106	9
⅜–16 x 4	PM06107	8
⅜–16 x 5	PM06108	6
⅞–14 x 1	PM06109	17
⅞–14 x 1½	PM06110	14

Size	Part No.	Pcs. per lb.
⅞–14 x 2	PM06111	10
⅞–14 x 2½	PM06112	8
⅞–14 x 3	PM06113	7
⅞–14 x 3¼	PM06311	7
⅞–14 x 3½	PM06114	6
⅞–14 x 4	PM06115	6
½–13 x 1	PM06116	12
½–13 x 1¼	PM06312	10
½–13 x 1½	PM06117	9
½–13 x 1¾	PM06313	8
½–13 x 2	PM06118	7
½–13 x 2¼	PM06314	7
½–13 x 2½	PM06119	6
½–13 x 3	PM06120	5
½–13 x 3½	PM06121	5
½–13 x 4	PM06122	4
½–13 x 5	PM06123	3
½–13 x 6	PM06124	3
½–13 x 8	PM06319	2

Nuts – Hex – Grade 8

¼–20	PM06142	146
⅝–18	PM06143	98
⅜–16	PM06144	68
⅞–14	PM06145	37
½–13	PM06146	28

Flat Washers – USS – Grade 8

¼	PM06329	134
⅝	PM06330	78
⅜	PM06331	60
⅞	PM06332	37
½	PM06333	23

Lock Washers – Grade 8

¼	PM06156	472
⅝	PM06157	248
⅜	PM06158	161
⅞	PM06159	113
½	PM06160	77

Grade 8 Hex Bolt Assortment

$\frac{5}{8}$ - $\frac{3}{4}$ -in. Diameter "B" Assortment

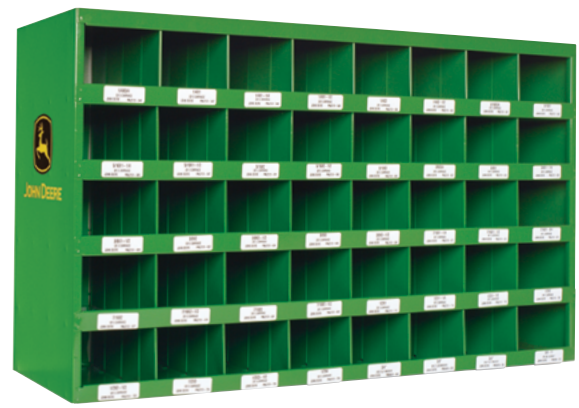
Coarse Thread / Color: BLUE

Grade 8 "B" Assortment Part No. PM15476 includes all the parts listed below, 40-hole metal bin (pictured), and labels. Metal base Part No. PM15464 is optional.

Grade 8 "B" Assortment "Hardware only" Part No. PM15499

**All bulk Grade 8 fasteners ship in 5-lb. packages.*

Size	Part No.	Pcs. per lb.		
40-hole metal bin	PM15463	1		
Labels	Included	1		
$\frac{5}{8}$ -11 x 1	PM06125	7		
$\frac{5}{8}$ -11 x 1½	PM06126	6		
$\frac{5}{8}$ -11 x 2	PM06127	5		
$\frac{5}{8}$ -11 x 2½	PM06128	4		
$\frac{5}{8}$ -11 x 3	PM06129	3		
$\frac{5}{8}$ -11 x 3½	PM06130	3		
$\frac{5}{8}$ -11 x 4	PM06131	3		
$\frac{5}{8}$ -11 x 5	PM06132	2		
$\frac{5}{8}$ -11 x 6	PM06133	2		
$\frac{5}{8}$ -11 x 8	PM06323	1		
$\frac{3}{4}$ -10 x 1½	PM06134	3		
$\frac{3}{4}$ -10 x 2	PM06135	3		
$\frac{3}{4}$ -10 x 2½	PM06136	3		
$\frac{3}{4}$ -10 x 3	PM06137	2		
$\frac{3}{4}$ -10 x 3½	PM06138	2		
$\frac{3}{4}$ -10 x 4	PM06139	2		
$\frac{3}{4}$ -10 x 5	PM06140	1		
$\frac{3}{4}$ -10 x 6	PM06141	1		
$\frac{3}{4}$ -10 x 8	PM06328	1		
Nuts — Hex — Grade 8				
$\frac{5}{8}$ -11	PM06147	14		
$\frac{3}{4}$ -10	PM06148	9		
Flat Washers — USS — Grade 8				
$\frac{5}{8}$	PM06334	12		
$\frac{3}{4}$	PM06335	8		
Lock Washers — Grade 8				
$\frac{5}{8}$	PM06161	45		
$\frac{3}{4}$	PM06162	27		
Lock Nut — Grade C — Grade 8				
Size	Part No.	Pcs. per lb.	Width AF	Height
$\frac{1}{4}$ -20	PM06670	150	$\frac{7}{16}$	0.145
$\frac{5}{16}$ -18	PM06671	102	$\frac{1}{2}$	0.166
$\frac{3}{8}$ -16	PM06672	61	$\frac{9}{16}$	0.198
$\frac{7}{16}$ -14	PM06673	38	$1\frac{1}{16}$	0.223
$\frac{1}{2}$ -13	PM06674	29	$\frac{3}{4}$	0.262
$\frac{5}{8}$ -11	PM06675	15	$1\frac{5}{16}$	0.329
$\frac{3}{4}$ -10	PM06676	10	$1\frac{1}{8}$	0.382
$\frac{7}{8}$ -9	PM06677	6	$1\frac{5}{16}$	0.450
1-8	PM06678	4	$1\frac{1}{2}$	0.513



Grade 8 Hex Bolt Assortment

$\frac{7}{8}$ -1-in. Diameter "C" Assortment

Coarse Thread / Color: BLUE

Grade 8 "C" Assortment "HARDWARE ONLY" Part No. PM15490

**All bulk Grade 8 fasteners ship in 5-lb. packages.*

Size	Part No.	Pcs. per lb.
$\frac{7}{8}$ -9 x 2	PM06636	2
$\frac{7}{8}$ -9 x 2½	PM06637	2
$\frac{7}{8}$ -9 x 3	PM06638	2
$\frac{7}{8}$ -9 x 3½	PM06639	1
$\frac{7}{8}$ -9 x 4	PM06640	1
$\frac{7}{8}$ -9 x 4½	PM06641	1
$\frac{7}{8}$ -9 x 5	PM06642	1
$\frac{7}{8}$ -9 x 5½	PM06643	1
$\frac{7}{8}$ -9 x 6	PM06644	1
$\frac{7}{8}$ -9 x 7	PM06645	1
$\frac{7}{8}$ -9 x 8	PM06646	1
$\frac{7}{8}$ -9 x 9	PM06647	1
$\frac{7}{8}$ -9 x 10	PM06648	1
$\frac{7}{8}$ -9 x 12	PM06649	1
1-8 x 2	PM06650	2
1-8 x 2½	PM06651	1
1-8 x 3	PM06652	1
1-8 x 3½	PM06653	1
1-8 x 4	PM06654	1
1-8 x 4½	PM06655	1
1-8 x 5	PM06656	1
1-8 x 5½	PM06657	1
1-8 x 6	PM06658	1
1-8 x 7	PM06659	1
1-8 x 8	PM06660	1
1-8 x 9	PM06661	1
1-8 x 10	PM06662	1
1-8 x 12	PM06663	1
Nuts — Hex — Grade 8		
$\frac{7}{8}$ -9	PM06664	5
1-8	PM06667	4
Flat Washers — USS — Grade 8		
$\frac{7}{8}$	PM06665	8
1	PM06668	7
Lock Washers — Grade 8		
$\frac{7}{8}$	PM06666	18
1	PM06669	12

Notes

Grade 5 Fasteners

MEET OR EXCEED SAE J429
SPECIFICATIONS, MINIMUM
TENSILE STRENGTH – 120,000 psi
PROOF LOAD – 85,000 psi

Grade 5 Bolts – Hex Coarse Thread / Color: GREEN

These are medium carbon-steel fasteners that have been heat-treated, quenched, and then tempered to achieve a level of tensile strength and hardness that meet the requirements for a wide range of mechanical assemblies. They are identified by three radial lines and the **manufacturer's head marking**. Grade 5 fasteners are specified by equipment manufacturers for general applications where moderate strength is required.

**All bulk Grade 5 Hex fasteners ship in 10-lb. packages.*



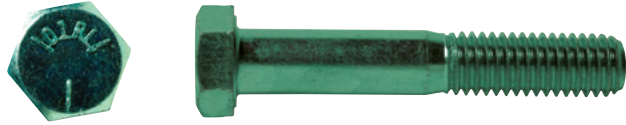
Note: Bulk hardware meets ANSI specifications for hardness, tensile strength, and proof load. This product can be used for the warranty repairs of John Deere equipment.

Size	Part No.	Pcs. per lb.
¼–20 x ½	PM05833	82
¼–20 x ¾	PM05834	69
¼–20 x 1	PM05835	56
¼–20 x 1¼	PM05836	48
¼–20 x 1½	PM05837	41
¼–20 x 1¾	PM05838	35
¼–20 x 2	PM05839	32
¼–20 x 2½	PM05840	26
¼–20 x 3	PM05841	22
¼–20 x 3½	PM05842	19
¼–20 x 4	PM05843	17
¼–20 x 4½	PM05844	15
¼–20 x 5	PM05845	13
¼–20 x 5½	PM05846	13
¼–20 x 6	PM05847	12
⅝–18 x ½	PM05848	53
⅝–18 x ¾	PM05849	41
⅝–18 x 1	PM05850	36
⅝–18 x 1¼	PM05851	26
⅝–18 x 1½	PM05852	25
⅝–18 x 2	PM05854	20
⅝–18 x 2¼	PM05855	18
⅝–18 x 2½	PM05856	16
⅝–18 x 3	PM05857	14
⅝–18 x 3½	PM05858	12
⅝–18 x 4	PM05859	11
⅝–18 x 4½	PM05860	10
⅝–18 x 5	PM05861	9
⅝–18 x 5½	PM05862	8
⅝–18 x 6	PM05863	8
¾–16 x ¾	PM05865	28
¾–16 x 1	PM05866	24

Size	Part No.	Pcs. per lb.
⅜–16 x 1¼	PM05867	20
⅜–16 x 1½	PM05868	18
⅜–16 x 1¾	PM06224	16
⅜–16 x 2	PM05869	14
⅜–16 x 2½	PM05871	11
⅜–16 x 3	PM05872	10
⅜–16 x 3½	PM05873	8
⅜–16 x 4	PM05874	7
⅜–16 x 4½	PM05875	7
⅜–16 x 5	PM05876	6
⅜–16 x 5½	PM05877	6
⅜–16 x 6	PM05878	5
⅜–16 x 6½	PM05879	5
⅜–16 x 7	PM05880	4
⅜–16 x 8	PM05881	4
⅜–16 x 9	PM06225	4
⅜–16 x 10	PM06226	3
⅜–16 x 12	PM06227	3
7/16–14 x 1	PM05882	17
7/16–14 x 1¼	PM05883	15
7/16–14 x 1½	PM05884	13
7/16–14 x 2	PM05886	10
7/16–14 x 2½	PM05887	8
7/16–14 x 3	PM05888	7
7/16–14 x 3½	PM05889	6
7/16–14 x 4	PM05890	5
7/16–14 x 4½	PM05891	5
7/16–14 x 5	PM05892	4
7/16–14 x 5½	PM05893	4
7/16–14 x 6	PM05894	4
7/16–14 x 7	PM06228	3
7/16–14 x 8	PM06229	3

Grade 5 Bolts — Hex Coarse Thread / Color: GREEN

(continued)



Size	Part No.	Pcs. per lb.
½-13 x ¾	PM05895	13
½-13 x 1	PM05896	12
½-13 x 1¼	PM05897	10
½-13 x 1½	PM05898	9
½-13 x 1¾	PM05899	8
½-13 x 2	PM05900	7
½-13 x 2¼	PM05901	7
½-13 x 2½	PM05902	6
½-13 x 2¾	PM05903	6
½-13 x 3	PM05904	5
½-13 x 3½	PM05905	5
½-13 x 4	PM05906	4
½-13 x 4½	PM05907	4
½-13 x 5	PM05908	3
½-13 x 5½	PM05909	3
½-13 x 6	PM05910	3
½-13 x 6½	PM05911	3
½-13 x 7	PM05912	2
½-13 x 7½	PM06230	2
½-13 x 8	PM05913	2
½-13 x 9	PM05914	2
½-13 x 10	PM05915	2
½-13 x 12	PM06231	2
¾-12 x 1	PM06232	9
¾-12 x 1½	PM05916	7
¾-12 x 2	PM05917	6
¾-12 x 2½	PM05918	5
¾-12 x 3	PM05919	4
¾-12 x 4	PM05921	3
¾-12 x 5	PM05922	3
¾-12 x 6	PM05923	2
¾-11 x 1	PM05924	6
¾-11 x 1¼	PM05925	6
¾-11 x 1½	PM05926	5
¾-11 x 1¾	PM05927	5
¾-11 x 2	PM05928	4
¾-11 x 2¼	PM05929	4
¾-11 x 2½	PM05930	4
¾-11 x 3	PM05931	3
¾-11 x 3½	PM05932	3
¾-11 x 4	PM05933	3
¾-11 x 4½	PM05934	2
¾-11 x 5	PM05935	2
¾-11 x 5½	PM05936	2
¾-11 x 6	PM05937	2
¾-11 x 6½	PM05938	2
¾-11 x 7	PM05939	2

Size	Part No.	Pcs. per lb.
⅝-11 x 7½	PM06234	2
⅝-11 x 8	PM05940	1
⅝-11 x 9	PM05941	1
⅝-11 x 10	PM05942	1
⅝-11 x 12	PM06235	1
¾-10 x 1½	PM05943	4
¾-10 x 1¾	PM05944	3
¾-10 x 2	PM05945	3
¾-10 x 2½	PM05946	3
¾-10 x 3	PM05947	2
¾-10 x 3½	PM05948	2
¾-10 x 4	PM05949	2
¾-10 x 4½	PM05950	2
¾-10 x 5	PM05951	1
¾-10 x 5½	PM05952	1
¾-10 x 6	PM05953	1
¾-10 x 6½	PM05954	1
¾-10 x 7	PM05955	1
¾-10 x 7½	PM05956	1
¾-10 x 8	PM05957	1
¾-10 x 9	PM05958	1
¾-10 x 10	PM05959	1
¾-10 x 12	PM06236	1
⅞-9 x 1½	PM05960	3
⅞-9 x 2	PM05961	2
⅞-9 x 2½	PM05962	2
⅞-9 x 3	PM05963	1
⅞-9 x 3½	PM05964	1
⅞-9 x 4	PM05965	1
⅞-9 x 4½	PM05966	1
⅞-9 x 5	PM05967	1
⅞-9 x 5½	PM05968	1
⅞-9 x 6	PM05969	1
⅞-9 x 7	PM05970	1
⅞-9 x 8	PM05971	1
⅞-9 x 9	PM06237	1
⅞-9 x 10	PM05972	1
1-8 x 2	PM05973	1
1-8 x 2½	PM05974	1
1-8 x 3	PM05975	1
1-8 x 3½	PM05976	1
1-8 x 4	PM05977	1
1-8 x 4½	PM05978	1
1-8 x 5	PM05979	1
1-8 x 5½	PM05980	1
1-8 x 6	PM05981	1
1-8 x 7	PM05982	1

Grade 5 Bolts — Hex Coarse Thread / Color: GREEN

(continued)

Size	Part No.	Pcs. per lb.
1-8 x 8	PM059830	1
1-8 x 9	PM05984	1
1-8 x 10	PM06238	1
1-8 x 12	PM06239	1

Grade 5 Bolts — Carriage Coarse Thread / Color: GREEN

*All bulk Grade 5 Carriage Bolts ship in 5-lb. packages.

Size	Part No.	Pcs. per lb.
¼-20 x ¾	PM06240	36
¼-20 x 1	PM06241	28
¼-20 x 1¼	PM06242	26
¼-20 x 1½	PM06243	22
¼-20 x 2	PM06244	17
¼-20 x 2½	PM06245	14
⅝-18 x ¾	PM06246	21
⅝-18 x 1	PM06247	17
⅝-18 x 1¼	PM06248	14
⅝-18 x 1½	PM06249	13
⅝-18 x 2	PM06250	10
⅝-18 x 2½	PM06251	9
⅝-18 x 3	PM06252	7
⅜-16 x ¾	PM06253	13
⅜-16 x 1	PM06254	11
⅜-16 x 1¼	PM06255	10
⅜-16 x 1½	PM06256	9
⅜-16 x 1¾	PM06257	8
⅜-16 x 2	PM06258	7
⅜-16 x 2¼	PM06259	6
⅜-16 x 2½	PM06260	6
⅜-16 x 3	PM06261	5
⅜-16 x 3½	PM06262	4
⅜-16 x 4	PM06263	4
⅞-14 x 1¼	PM06264	7
⅞-14 x 1½	PM06265	6
⅞-14 x 1¾	PM06266	6
⅞-14 x 2	PM06267	5
⅞-14 x 2½	PM06268	4



Note: Bulk hardware meets ANSI specifications for hardness, tensile strength, and proof load. This product can be used for the warranty repairs of John Deere equipment.

Size	Part No.	Pcs. per lb.
⅞-14 x 3	PM06269	4
⅞-14 x 3½	PM06270	3
⅞-14 x 4	PM06271	3
½-13 x 1	PM06272	5
½-13 x 1¼	PM06273	5
½-13 x 1½	PM06274	5
½-13 x 1¾	PM06275	4
½-13 x 2	PM06276	4
½-13 x 2½	PM06277	3
½-13 x 3	PM06278	3
½-13 x 3½	PM06279	3
½-13 x 4	PM06280	2
½-13 x 4½	PM06281	2
½-13 x 5	PM06282	2
⅝-11 x 2	PM06283	2
⅝-11 x 2½	PM06284	2
⅝-11 x 2¾	PM06285	2
⅝-11 x 3	PM06286	2
⅝-11 x 3½	PM06287	2
⅝-11 x 4	PM06288	1
⅝-11 x 4½	PM06289	1
⅝-11 x 5	PM06290	1
⅝-11 x 6	PM06291	1
¾-10 x 3	PM06292	1
¾-10 x 3½	PM06293	1
¾-10 x 4	PM06294	1
¾-10 x 4½	PM06295	1
¾-10 x 5	PM06296	1
¾-10 x 6	PM06297	1

Grade 5 Nuts — Hex Coarse Thread / Color: GREEN

*Shipped in 10-lb. packages.



Size	Part No.	Pcs. per lb.	Width AF	Height
¼–20	PM05985	146	7/16	7/32
5/16–18	PM05986	90	½	17/64
3/8–16	PM05987	63	9/16	21/64
7/16–14	PM05988	38	1 1/16	3/8
½–13	PM05989	27	¾	7/16
9/16–12	PM05990	17	7/8	31/64
5/8–11	PM05991	14	15/16	35/64
¾–10	PM05992	9	1 1/8	41/64
7/8–9	PM05993	5	1 5/16	¾
1–8	PM05994	4	1 ½	55/64

Grade 5 Nuts — Heavy Hex Coarse Thread / Color: SILVER

These Grade 5 heavy hex nuts are used with
plow bolts.

*Shipped in 10-lb. packages.



Size	Part No.	Pcs. per lb.	Width AF	Height
3/8–16	PM06707	32	1 1/16	23/64
7/16–14	PM06708	24	¾	27/64
½–13	PM06709	15	7/8	31/64
5/8–11	PM06710	8	1 1/16	39/64
¾–10	PM06711	5	1 ¼	47/64

Grade 2 Nuts — Heavy Hex Coarse Thread / Color: SILVER

*Shipped in 10-lb. packages.



Size	Part No.	Pcs. per lb.	Width AF	Height
¼–20	PM50122	95	½	15/64
5/16–18	PM50123	63	9/16	19/64
3/8–16	PM50124	32	1 1/16	23/64
7/16–14	PM50125	24	¾	27/64
½–13	PM50126	17	7/8	31/64
9/16–12	PM50127	13	15/16	35/64
5/8–11	PM50128	9	1 1/16	39/64
¾–10	PM50129	6	1 ¼	47/64
7/8–9	PM50130	4	1 7/16	55/64
1–8	PM50131	2	1 5/8	63/64

Grade 2 Lock Nuts — Nylon Insert Coarse Thread / Color: BLACK

*Shipped in 5-lb. packages.



Size	Part No.	Pcs. per lb.	Width AF	Height
¼–20	PM05660	136	7/16	5/16
5/16–18	PM05661	90	½	1 1/32
3/8–16	PM05662	57	9/16	29/64
7/16–14	PM05663	51	5/8	29/64
½–13	PM05664	23	¾	19/32
9/16–12	PM50158	8	7/8	41/64
5/8–11	PM50159	6	15/16	¾
¾–10	PM50160	4	1 1/16	7/8
7/8–9	PM50161	5	1 ¼	63/64
1–8	PM50162	4	1 ½	19/64

Grade 8 (Grade C) Lock Nuts — Prevailing Torque Coarse Thread / Color: BLACK

*Shipped in 5-lb. packages.



Size	Part No.	Pcs. per lb.	Width AF	Height
¼–20	PM06670	150	7/16	0.145
5/16–18	PM06671	102	½	0.166
3/8–16	PM06672	61	9/16	0.198
7/16–14	PM06673	38	1 1/16	0.223
½–13	PM06674	29	¾	0.262
5/8–11	PM06675	15	15/16	0.329
¾–10	PM06676	10	1 1/8	0.382
7/8–9	PM06677	6	1 5/16	0.450
1–8	PM06678	4	1 ½	0.513

Grade 2 Nuts — Serrated Flange Coarse Thread / Color: BLUE

*Shipped in 5-lb. packages.



Size	Part No.	Pcs. per lb.	Width AF	Height
¼–20	PM06679	110	7/16	¼
5/16–18	PM06680	79	½	¼
3/8–16	PM06681	55	9/16	5/16
7/16–14	PM06682	30	5/8	7/16
½–13	PM06683	23	¾	15/32
5/8–11	PM04698	9	7/8	17/32
¾–10	PM04699	8	1	19/32

Grade 2 Flat Washers – Heavy SAE

Color: SILVER

Designed to be used with plow bolts.
Can also be used for other applications.



*Shipped in 10-lb. packages.

Size	Part No.	Pcs. per lb.	I.D.	O.D.	Thickness
3/8	PM06712	67	0.406	0.812	0.08
7/16	PM06713	51	0.469	0.922	0.08
1/2	PM06714	22	0.531	1.062	0.12
5/8	PM06715	13	0.656	1.312	0.15
3/4	PM06716	10	0.812	1.469	0.15

Fender Washers

Color: SILVER



*Shipped in 5-lb. packages.

Size	Part No.	Pcs. per lb.	I.D.	O.D.	Thickness
3/16 x 1	PM50184	76	0.219	1.000	0.049
1/4 x 1	PM50185	77	0.281	1.000	0.049
1/4 x 1 1/4	PM50186	50	0.281	1.250	0.049
1/4 x 1 1/2	PM50187	34	0.281	1.500	0.049
5/16 x 1 1/4	PM50188	53	0.344	1.250	0.049
5/16 x 1 1/2	PM50189	33	0.344	1.500	0.049
3/8 x 1 1/2	PM50190	35	0.406	1.500	0.049
1/2 x 2	PM50191	19	0.531	2.000	0.060

Lock Washers – Split

Color: SILVER

Medium alloy steel.

*Shipped in 10-lb. packages.



Size	Part No.	Pcs. per lb.	I.D.	O.D.	Thickness
1/4	PM04570	415	0.262	0.489	0.062
5/16	PM04571	245	0.326	0.586	0.078
3/8	PM04572	151	0.390	0.683	0.094
7/16	PM04573	96	0.455	0.779	0.109
1/2	PM04574	91	0.518	0.873	0.125
9/16	PM50155	58	0.582	0.971	0.141
5/8	PM04575	42	0.650	1.079	0.156
3/4	PM04576	25	0.775	1.271	0.188
7/8	PM50156	18	0.905	1.464	0.219
1	PM501570	12	1.042	1.661	0.250

Grade 8 Thick Flat Washers – USS

Color: YELLOW ZINC

*Shipped in 5-lb. packages.



Size	Part No.	Pcs. per lb.	I.D.	O.D.	Thickness
1/4	PM55376	140	0.73	0.319	0.083
5/16	PM55377	90	0.878	0.385	0.091
3/8	PM55378	72	0.995	0.454	0.09
7/16	PM55379	40	1.25	0.51	0.095
1/2	PM55380	24	1.377	0.56	0.14
9/16	PM55381	20	1.475	0.628	0.142
5/8	PM55382	12	1.744	0.718	0.158
5/8	PM55383	10	2.2	1.035	0.359

Grade 2 Flat Washers – USS

Color: SILVER

*Shipped in 10-lb. packages.



Size	Part No.	Pcs. per lb.	I.D.	O.D.	Thickness
#10	PM50193	357	0.250	0.562	0.049
1/4	PM04560	134	0.312	0.734	0.065
5/16	PM04561	78	0.375	0.875	0.083
3/8	PM04562	60	0.438	1.000	0.083
7/16	PM04563	37	0.500	1.250	0.083
1/2	PM04564	23	0.562	1.375	0.109
9/16	PM08426	20	0.625	1.469	0.109
5/8	PM04565	12	0.688	1.750	0.134
3/4	PM04566	8	0.812	2.000	0.148
7/8	PM08427	6	0.938	2.250	0.165
1	PM08428	5	1.062	2.500	0.165
1 1/8	PM08429	4	1.250	2.750	0.165
1 1/4	PM08430	3	1.375	3.000	0.165
1 3/8	PM04011	3	1.500	3.250	0.165
1 1/2	PM04012	2	1.625	3.500	0.165
1 3/4	PM04013	2	1.875	4.000	0.165
2	PM040140	2	2.125	4.500	0.165

Grade 2 Flat Washers – SAE

Color: SILVER

*Shipped in 10-lb. packages.



Size	Part No.	Pcs. per lb.	I.D.	O.D.	Thickness
1/4	PM50145	220	0.281	0.625	0.065
5/16	PM50146	192	0.344	0.688	0.065
3/8	PM50147	139	0.406	0.812	0.065
7/16	PM50148	97	0.469	0.922	0.065
1/2	PM50149	55	0.531	1.062	0.095
9/16	PM50150	43	0.594	1.156	0.095
5/8	PM50151	36	0.656	1.312	0.095
3/4	PM50152	27	0.812	1.469	0.134
7/8	PM50153	16	0.938	1.750	0.134
1	PM50154	12	1.062	2.000	0.134

Grade 8 Lock Washers – USS

Color: YELLOW ZINC

*Shipped in a box quantity package as indicated in the table.



Size	Part No.	Pcs. per box	I.D.	O.D.	Thickness
1-1/8	PM54170	5	1.742	1.181	0.206
1-1/2	PM54172	5	2.582	1.697	0.595

Grade 8 Flat Washers – USS

Color: YELLOW ZINC



Size	Part No.	Pcs. per box	I.D.	O.D.	Thickness
1-1/8	PM54173	5	2.739	1.275	0.158
1-3/4	PM54174	5	3.193	1.576	0.343
1-1/2	PM54175	5	3.494	1.622	0.164



Grade 5 Hex Bolt Assortment
¼-½-in. Diameter "A" Assortment
Coarse Thread / Color: GREEN

Grade 5 "A" Assortment Part No. PM15472 provides enough hardware and bins for two customers. The 10-lb. packages need to be divided equally between two displays. Contents include all parts listed below, two 40-hole metal bins, two 72-hole metal bins (pictured), and labels. Metal base Part No. PM15464 is optional.



Grade 5 "A" Assortment "Hardware only" Part No. PM15495

**All bulk Grade 5 Hex fasteners ship in 10-lb. packages.*

Size	Part No.	Pcs. per lb.
40-hole metal bin	PM15463	2
72-hole metal bin	PM15462	2
Labels/metal bin	Included	2
¼-20 x ½	PM05833	82
¼-20 x ¾	PM05834	69
¼-20 x 1	PM05835	56
¼-20 x 1¼	PM05836	48
¼-20 x 1½	PM05837	41
¼-20 x 2	PM05839	32
¼-20 x 2½	PM05840	26
¼-20 x 3	PM05841	22
¼-20 x 3½	PM05842	19
¼-20 x 4	PM05843	17
¼-20 x 4½	PM05844	15
¼-20 x 5	PM05845	13
¼-20 x 5½	PM05846	13
¼-20 x 6	PM05847	12
⅝-18 x ½	PM05848	53
⅝-18 x ¾	PM05849	41
⅝-18 x 1	PM05850	36
⅝-18 x 1¼	PM05851	26
⅝-18 x 1½	PM05852	25
⅝-18 x 2	PM05854	20
⅝-18 x 2¼	PM05855	18
⅝-18 x 2½	PM05856	16
⅝-18 x 3	PM05857	14
⅝-18 x 3½	PM05858	12
⅝-18 x 4	PM05859	11
⅝-18 x 4½	PM05860	10
⅝-18 x 5	PM05861	9
⅝-18 x 5½	PM05862	8
⅝-18 x 6	PM05863	8
⅜-16 x ¾	PM05865	28
⅜-16 x 1	PM05866	24
⅜-16 x 1¼	PM05867	20
⅜-16 x 1½	PM05868	18
⅜-16 x 1¾	PM06224	16
⅜-16 x 2	PM05869	14
⅜-16 x 2½	PM05871	11
⅜-16 x 3	PM05872	10
⅜-16 x 3½	PM05873	8

(continued)

Size	Part No.	Pcs. per lb.
$\frac{3}{8}$ -16 x 4	PM05874	7
$\frac{3}{8}$ -16 x 4½	PM05875	7
$\frac{3}{8}$ -16 x 5	PM05876	6
$\frac{3}{8}$ -16 x 5½	PM05877	6
$\frac{3}{8}$ -16 x 6	PM05878	5
$\frac{3}{8}$ -16 x 6½	PM05879	5
$\frac{3}{8}$ -16 x 7	PM05880	4
$\frac{3}{8}$ -16 x 8	PM05881	4
$\frac{3}{8}$ -16 x 9	PM06225	4
$\frac{3}{8}$ -16 x 10	PM06226	3
$\frac{3}{8}$ -16 x 12	PM06227	3
$\frac{7}{16}$ -14 x 1	PM05882	17
$\frac{7}{16}$ -14 x 1¼	PM05883	15
$\frac{7}{16}$ -14 x 1½	PM05884	13
$\frac{7}{16}$ -14 x 2	PM05886	10
$\frac{7}{16}$ -14 x 2½	PM05887	8
$\frac{7}{16}$ -14 x 3	PM05888	7
$\frac{7}{16}$ -14 x 3½	PM05889	6
$\frac{7}{16}$ -14 x 4	PM05890	5
$\frac{7}{16}$ -14 x 4½	PM05891	5
$\frac{7}{16}$ -14 x 5	PM05892	4
$\frac{7}{16}$ -14 x 5½	PM05893	4
$\frac{7}{16}$ -14 x 6	PM05894	4
$\frac{7}{16}$ -14 x 8	PM06229	3
$\frac{1}{2}$ -13 x $\frac{3}{4}$	PM05895	13
$\frac{1}{2}$ -13 x 1	PM05896	12
$\frac{1}{2}$ -13 x 1¼	PM05897	10
$\frac{1}{2}$ -13 x 1½	PM05898	9
$\frac{1}{2}$ -13 x 1¾	PM05899	8
$\frac{1}{2}$ -13 x 2	PM05900	7
$\frac{1}{2}$ -13 x 2¼	PM05901	7
$\frac{1}{2}$ -13 x 2½	PM05902	6
$\frac{1}{2}$ -13 x 2¾	PM05903	6
$\frac{1}{2}$ -13 x 3	PM05904	5
$\frac{1}{2}$ -13 x 3½	PM05905	5
$\frac{1}{2}$ -13 x 4	PM05906	4
$\frac{1}{2}$ -13 x 4½	PM05907	4
$\frac{1}{2}$ -13 x 5	PM05908	3
$\frac{1}{2}$ -13 x 5½	PM05909	3
$\frac{1}{2}$ -13 x 6	PM05910	3

Size	Part No.	Pcs. per lb.
Grade 5 Hex Nuts		
$\frac{1}{4}$ -20	PM05985	146
$\frac{5}{16}$ -18	PM05986	90
$\frac{3}{8}$ -16	PM05987	63
$\frac{7}{16}$ -14	PM05988	38
$\frac{1}{2}$ -13	PM05989	27
Grade 2 Nylon Lock Nuts		
$\frac{1}{4}$ -20	PM05660	136
$\frac{5}{16}$ -18	PM05661	90
$\frac{3}{8}$ -16	PM05662	57
$\frac{7}{16}$ -14	PM05663	51
$\frac{1}{2}$ -13	PM05664	23
Grade 2 USS Flat Washers		
$\frac{1}{4}$	PM04560	134
$\frac{5}{16}$	PM04561	78
$\frac{3}{8}$	PM04562	60
$\frac{7}{16}$	PM04563	37
$\frac{1}{2}$	PM04564	23
Medium Alloy Split Lock Washers		
$\frac{1}{4}$	PM04570	415
$\frac{5}{16}$	PM04571	245
$\frac{3}{8}$	PM04572	151
$\frac{7}{16}$	PM04573	96
$\frac{1}{2}$	PM04574	91
Grade 2 Nuts — Serrated Flange		
$\frac{1}{4}$ -20	PM06679	110
$\frac{5}{16}$ -18	PM06680	79
$\frac{3}{8}$ -16	PM06681	55
$\frac{7}{16}$ -14	PM06682	30
$\frac{1}{2}$ -13	PM06683	23
Fender Washers		
$\frac{3}{16}$ x 1	PM50184	76
$\frac{1}{4}$ x 1	PM50185	77
$\frac{1}{4}$ x 1¼	PM50186	50
$\frac{1}{4}$ x 1½	PM50187	34
$\frac{5}{16}$ x 1¼	PM50188	53
$\frac{5}{16}$ x 1½	PM50189	33
$\frac{3}{8}$ x 1½	PM50190	35
$\frac{1}{2}$ x 2	PM50191	19

Grade 5 Hex Bolt Assortment
5/8"-1 1/2"-in. Diameter "B" Assortment
Coarse Thread / Color: GREEN

Grade 5 "B" Assortment Part No. PM15473 provides enough hardware and bins for two customers. The 10-lb. packages need to be divided equally between two displays. Contents include all parts listed below, two 40-hole metal bins (pictured), and labels. Metal base Part No. PM15464 is optional.



Grade 5 "B" Assortment "Hardware only" Part No. PM15496

**All bulk Grade 5 Hex fasteners ship in 10-lb. packages.*

Size	Part No.	Pcs. per lb.
40-hole metal bin	PM15463	2
Labels/metal bin	Included	2
5/8-11 x 1	PM05924	6
5/8-11 x 1 1/4	PM05925	6
5/8-11 x 1 1/2	PM05926	5
5/8-11 x 1 3/4	PM05927	5
5/8-11 x 2	PM05928	4
5/8-11 x 2 1/4	PM05929	4
5/8-11 x 2 1/2	PM05930	4
5/8-11 x 3	PM05931	3
5/8-11 x 3 1/2	PM05932	3
5/8-11 x 4	PM05933	3
5/8-11 x 4 1/2	PM05934	2
5/8-11 x 5	PM05935	2
5/8-11 x 5 1/2	PM05936	2
5/8-11 x 6	PM05937	2
5/8-11 x 8	PM05940	1
3/4-10 x 1 1/2	PM05943	4
3/4-10 x 1 3/4	PM05944	3
3/4-10 x 2	PM05945	3
3/4-10 x 2 1/2	PM05946	3
3/4-10 x 3	PM05947	2
3/4-10 x 3 1/2	PM05948	2
3/4-10 x 4	PM05949	2
3/4-10 x 4 1/2	PM05950	2
3/4-10 x 5	PM05951	1
3/4-10 x 5 1/2	PM05952	1
3/4-10 x 6	PM05953	1
3/4-10 x 7	PM05955	1
3/4-10 x 8	PM05957	1
Grade 5 Hex Nuts		
5/8-11	PM05991	14
3/4-10	PM05992	9
Grade 2 Nylon Lock Nuts		
5/8-11	PM50159	6
3/4-10	PM50160	4

(continued)

Size	Part No.	Pcs. per lb.
Grade 2 USS Flat Washers		
5/8	PM04565	12
3/4	PM04566	8
Medium Alloy Split Lock Washers		
5/8	PM04575	42
3/4	PM04576	25
Grade 2 Nuts – Serrated Flange		
5/8-11	PM04698	9
3/4-10	PM04699	8

Grade 5 Hex Bolt Assortment 3/8-1-in. Diameter “C” Assortment Coarse Thread / Color: GREEN

Grade 5 “C” Assortment “HARDWARE ONLY” Part No. PM15489

**All bulk Grade 5 Hex fasteners ship in 10-lb. packages.*



Size	Part No.	Pcs. per lb.
7/8-9 x 1½	PM05960	3
7/8-9 x 2	PM05961	2
7/8-9 x 2½	PM05962	2
7/8-9 x 3	PM05963	1
7/8-9 x 3½	PM05964	1
7/8-9 x 4	PM05965	1
7/8-9 x 4½	PM05966	1
7/8-9 x 5	PM05967	1
7/8-9 x 5½	PM05968	1
7/8-9 x 6	PM05969	1
7/8-9 x 7	PM05970	1
7/8-9 x 8	PM05971	1
7/8-9 x 9	PM06237	1
7/8-9 x 10	PM05972	1
1-8 x 2	PM05973	1
1-8 x 2½	PM05974	1
1-8 x 3	PM05975	1
1-8 x 3½	PM05976	1
1-8 x 4	PM05977	1
1-8 x 4½	PM05978	1

Size	Part No.	Pcs. per lb.
1-8 x 5	PM05979	1
1-8 x 5½	PM05980	1
1-8 x 6	PM05981	1
1-8 x 7	PM05982	1
1-8 x 8	PM059830	1
1-8 x 9	PM05984	1
1-8 x 10	PM06238	1
1-8 x 12	PM06239	1
Grade 5 Hex Nuts		
7/8-9	PM05993	5
1-8	PM05994	4
Grade 2 Nylon Lock Nuts		
7/8-9	PM50161	5
1-8	PM50162	4
Grade 2 USS Flat Washers		
7/8	PM08427	6
1	PM08428	5
Medium Alloy Split Lock Washers		
7/8	PM50156	18
1	PM501570	12



Grade 5 Carriage Bolt Assortment Coarse Thread / Color: GREEN

Grade 5 Carriage Bolt Assortment Part No. PM15474 includes all parts listed below, 40-hole metal bin (pictured), and labels. Metal base Part No. PM15464 is optional.

Grade 5 Carriage Bolt Assortment "Hardware only" Part No. PM15497

**All bulk Grade 5 Carriage Bolts ship in 5-lb. packages.*

Size	Part No.	Pcs. per lb.
40-hole metal bin	PM15463	1
Labels	Included	1
¼ x ¾	PM06240	36
¼ x 1	PM06241	28
¼ x 1¼	PM06242	26
¼ x 1½	PM06243	22
¼ x 2	PM06244	17
¼ x 2½	PM06245	14
⅕ x ¾	PM06246	21
⅕ x 1	PM06247	17
⅕ x 1¼	PM06248	14
⅕ x 1½	PM06249	13
⅕ x 2	PM06250	10
⅕ x 2½	PM06251	9
⅕ x 3	PM06252	7
⅜ x ¾	PM06253	13
⅜ x 1	PM06254	11
⅜ x 1¼	PM06255	10
⅜ x 1½	PM06256	9

Size	Part No.	Pcs. per lb.
⅜ x 2	PM06258	7
⅜ x 2½	PM06260	6
⅜ x 3	PM06261	5
⅜ x 3½	PM06262	4
7/16 x 1¼	PM06264	7
7/16 x 1½	PM06265	6
7/16 x 1¾	PM06266	6
7/16 x 2	PM06267	5
7/16 x 2½	PM06268	4
7/16 x 3	PM06269	4
7/16 x 3½	PM06270	3
½ x 1	PM06272	5
½ x 1¼	PM06273	5
½ x 1½	PM06274	5
½ x 2	PM06276	4
½ x 2½	PM06277	3
½ x 3	PM06278	3
½ x 3½	PM06279	3
½ x 4	PM06280	2

Non-Hardened Fasteners

Non-Hardened Bolts – Hex

Coarse Thread / Color: SILVER

These are low carbon-steel fasteners that have not been heat-treated.



**All bulk non-hardened fasteners ship in 10-lb. packages.*

Size	Part No.	Pcs. per lb.
¼–20 x ½	PM08320	82
¼–20 x ¾	PM04350	69
¼–20 x 1	PM04351	56
¼–20 x 1¼	PM04352	47
¼–20 x 1½	PM04353	40
¼–20 x 2	PM04354	30
¼–20 x 2½	PM04355	26
¼–20 x 3	PM04356	22
¼–20 x 3½	PM04357	19
¼–20 x 4	PM04358	18
¼–20 x 4½	PM04359	16
¼–20 x 5	PM04360	14
¼–20 x 5½	PM04361	13
¼–20 x 6	PM04362	12
¼–20 x 7	PM04363	10
¼–20 x 8	PM04364	9
⅝–18 x ¾	PM04365	43
⅝–18 x 1	PM04366	36
⅝–18 x 1¼	PM04367	32
⅝–18 x 1½	PM04368	26
⅝–18 x 2	PM04369	21
⅝–18 x 2½	PM04370	17
⅝–18 x 3	PM04371	15
⅝–18 x 3½	PM04372	13
⅝–18 x 4	PM04373	11
⅝–18 x 4½	PM04374	10
⅝–18 x 5	PM04375	9
⅝–18 x 5½	PM04376	8
⅝–18 x 6	PM04377	8
⅝–18 x 7	PM04378	7
⅝–18 x 8	PM04379	6
¾–16 x ¾	PM04380	29
¾–16 x 1	PM04381	25
¾–16 x 1¼	PM04382	22
¾–16 x 1½	PM04383	19
¾–16 x 2	PM04384	14
¾–16 x 2½	PM04385	12
¾–16 x 3	PM04386	10

Size	Part No.	Pcs. per lb.
¾–16 x 3½	PM04387	8
¾–16 x 4	PM04388	7
¾–16 x 4½	PM04389	7
¾–16 x 5	PM04390	6
¾–16 x 5½	PM04391	6
¾–16 x 6	PM04392	5
¾–16 x 6½	PM05643	6
¾–16 x 7	PM04393	4
¾–16 x 8	PM04395	4
¾–16 x 9	PM04396	4
¾–16 x 10	PM04397	3
7/16–14 x 1	PM04398	17
7/16–14 x 1½	PM04399	13
7/16–14 x 2	PM04400	10
7/16–14 x 2½	PM04401	8
7/16–14 x 3	PM04402	7
7/16–14 x 3½	PM04403	6
7/16–14 x 4	PM04404	5
7/16–14 x 4½	PM04405	5
7/16–14 x 5	PM04406	5
7/16–14 x 5½	PM08321	4
7/16–14 x 6	PM04407	4
7/16–14 x 7	PM04408	3
7/16–14 x 8	PM04409	3
½–13 x 1	PM04410	12
½–13 x 1¼	PM04411	10
½–13 x 1½	PM04412	9
½–13 x 1¾	PM05644	8
½–13 x 2	PM04413	7
½–13 x 2½	PM04414	6
½–13 x 3	PM04415	5
½–13 x 3½	PM04416	5
½–13 x 4	PM04417	4
½–13 x 4½	PM04418	4
½–13 x 5	PM04419	3
½–13 x 5½	PM04420	3
½–13 x 6	PM04421	3
½–13 x 6½	PM04422	3

Non-Hardened Bolts – Hex

Coarse Thread / Color: SILVER

(continued)

*All bulk non-hardened fasteners ship in 10-lb. packages.



Size	Part No.	Pcs. per lb.
1/2-13 x 7	PM04423	2
1/2-13 x 8	PM04424	2
1/2-13 x 9	PM04425	2
1/2-13 x 10	PM04426	2
5/8-11 x 1	PM08322	7
5/8-11 x 1 1/2	PM04427	5
5/8-11 x 2	PM04428	4
5/8-11 x 2 1/2	PM04429	4
5/8-11 x 3	PM04430	3
5/8-11 x 3 1/2	PM04431	3
5/8-11 x 4	PM04432	3
5/8-11 x 4 1/2	PM04433	2
5/8-11 x 5	PM04434	2
5/8-11 x 5 1/2	PM04435	2
5/8-11 x 6	PM04436	2
5/8-11 x 6 1/2	PM04437	2
5/8-11 x 7	PM04438	2
5/8-11 x 8	PM04439	1

Size	Part No.	Pcs. per lb.
5/8-11 x 9	PM04440	1
5/8-11 x 10	PM04441	1
3/4-10 x 1 1/2	PM04442	3
3/4-10 x 2	PM04443	3
3/4-10 x 2 1/2	PM04444	2
3/4-10 x 3	PM04445	2
3/4-10 x 3 1/2	PM04446	2
3/4-10 x 4	PM04447	2
3/4-10 x 4 1/2	PM04448	2
3/4-10 x 5	PM04449	1
3/4-10 x 5 1/2	PM04450	1
3/4-10 x 6	PM04451	1
3/4-10 x 6 1/2	PM04452	1
3/4-10 x 7	PM04453	1
3/4-10 x 8	PM04454	1
3/4-10 x 9	PM04455	1
3/4-10 x 10	PM04456	1

Non-Hardened Bolts – Carriage Coarse Thread / Color: SILVER

**All bulk non-hardened fasteners ship in 10-lb. packages.*



Size	Part No.	Pcs. per lb.
¼-20 x 1	PM04580	56
¼-20 x 1¼	PM04581	48
¼-20 x 1½	PM04582	43
¼-20 x 2	PM04583	35
¼-20 x 2½	PM04584	31
¼-20 x 3	PM04585	26
¼-20 x 3½	PM04586	23
¼-20 x 4	PM04587	21
¼-20 x 4½	PM04588	18
¼-20 x 5	PM04589	17
¼-20 x 5½	PM04590	16
¼-20 x 6	PM04591	14
¼-20 x 7	PM04592	13
¼-20 x 8	PM04593	10
⅝-18 x 1	PM04594	33
⅝-18 x 1¼	PM50096	30
⅝-18 x 1½	PM04595	25
⅝-18 x 2	PM04596	21
⅝-18 x 2½	PM04597	18
⅝-18 x 3	PM04598	16
⅝-18 x 3½	PM04599	13
⅝-18 x 4	PM04600	12
⅝-18 x 4½	PM04601	11
⅝-18 x 5	PM04602	10
⅝-18 x 5½	PM04603	10
⅝-18 x 6	PM04604	9
⅝-18 x 7	PM04605	7
⅝-18 x 8	PM04606	7
¾-16 x 1	PM04607	22
¾-16 x 1½	PM04608	18
¾-16 x 2	PM04609	15
¾-16 x 2½	PM04610	12
¾-16 x 3	PM04611	10
¾-16 x 3½	PM04612	9
¾-16 x 4	PM04613	8
¾-16 x 4½	PM04614	8
¾-16 x 5	PM04615	7
¾-16 x 5½	PM04616	6
¾-16 x 6	PM04617	6
¾-16 x 6½	PM04618	5
¾-16 x 7	PM04619	5
¾-16 x 7½	PM04620	5

Size	Part No.	Pcs. per lb.
⅜-16 x 8	PM04621	5
⅜-16 x 9	PM04622	4
⅜-16 x 10	PM04623	4
7/16-14 x 1½	PM08394	11
7/16-14 x 2	PM08395	10
7/16-14 x 2½	PM08396	8
7/16-14 x 3	PM08397	7
7/16-14 x 3½	PM08398	7
7/16-14 x 4	PM08399	6
7/16-14 x 4½	PM08400	5
7/16-14 x 5	PM08401	5
7/16-14 x 5½	PM08402	4
7/16-14 x 6	PM08403	4
½-13 x 1½	PM04636	9
½-13 x 2	PM04637	7
½-13 x 2½	PM04638	6
½-13 x 3	PM04639	5
½-13 x 3½	PM04640	5
½-13 x 4	PM04641	4
½-13 x 4½	PM04642	4
½-13 x 5	PM04643	4
½-13 x 5½	PM04644	3
½-13 x 6	PM04645	3
½-13 x 6½	PM04646	3
½-13 x 7	PM04647	3
½-13 x 7½	PM04648	2
½-13 x 8	PM04649	2
½-13 x 8½	PM04650	2
½-13 x 9	PM04651	2
½-13 x 9½	PM08405	2
½-13 x 10	PM04653	2
⅝-11 x 2	PM08406	4
⅝-11 x 2½	PM08407	4
⅝-11 x 3	PM08408	3
⅝-11 x 3½	PM08409	3
⅝-11 x 4	PM08410	3
⅝-11 x 4½	PM08411	2
⅝-11 x 5	PM08412	2
⅝-11 x 5½	PM08413	2
⅝-11 x 6	PM08414	2
⅝-11 x 8	PM08416	2
⅝-11 x 10	PM08417	1

Grade 2 Nuts – Hex
Coarse Thread / Color: SILVER



*Shipped in 10-lb. packages.

Size	Part No.	Pcs. per lb.	Width AF	Height
¼–20	PM04670	146	7/16	7/32
5/16–18	PM04671	90	1/2	17/64
3/8–16	PM04672	63	9/16	21/64
7/16–14	PM04673	38	11/16	3/8
1/2–13	PM04674	27	3/4	7/16
9/16–12	PM08431	17	7/8	31/64
5/8–11	PM04675	14	15/16	35/64
3/4–10	PM04676	9	1 1/8	41/64
7/8–9	PM08432	5	1 5/16	3/4
1–8	PM08433	4	1 1/2	55/64

Grade 2 Nuts – Heavy Hex
Coarse Thread / Color: SILVER



*Shipped in 10-lb. packages.

Size	Part No.	Pcs. per lb.	Width AF	Height
¼–20	PM50122	95	1/2	15/64
5/16–18	PM50123	63	9/16	19/64
3/8–16	PM50124	32	1 1/16	23/64
7/16–14	PM50125	24	3/4	27/64
1/2–13	PM50126	17	7/8	31/64
9/16–12	PM50127	13	15/16	35/64
5/8–11	PM50128	9	1 1/16	39/64
3/4–10	PM50129	6	1 1/4	47/64
7/8–9	PM50130	4	1 7/16	55/64
1–8	PM50131	2	1 5/8	63/64

Grade 2 Lock Nuts – Nylon Insert
Coarse Thread / Color: BLACK



*Shipped in 5-lb. packages.

Size	Part No.	Pcs. per lb.	Width AF	Height
¼–20	PM05660	136	7/16	5/16
5/16–18	PM05661	90	1/2	11/32
3/8–16	PM05662	57	9/16	29/64
7/16–14	PM05663	51	5/8	29/64
1/2–13	PM05664	23	3/4	19/32
9/16–12	PM50158	8	7/8	41/64
5/8–11	PM50159	6	15/16	3/4
3/4–10	PM50160	4	1 1/16	7/8
7/8–9	PM50161	5	1 1/4	63/64
1–8	PM50162	4	1 1/2	13/64

Grade 8 (Grade C) Lock Nuts – Prevailing Torque
Coarse Thread / Color: BLACK



*Shipped in 5-lb. packages.

Size	Part No.	Pcs. per lb.	Width AF	Height
¼–20	PM06670	150	7/16	0.145
5/16–18	PM06671	102	1/2	0.166
3/8–16	PM06672	61	9/16	0.198
7/16–14	PM06673	38	1 1/16	0.223
1/2–13	PM06674	29	3/4	0.262
5/8–11	PM06675	15	15/16	0.329
3/4–10	PM06676	10	1 1/8	0.382
7/8–9	PM06677	6	1 5/16	0.450
1–8	PM06678	4	1 1/2	0.513

Grade 2 Nuts – Serrated Flange
Coarse Thread / Color: BLUE



*Shipped in 5-lb. packages.

Size	Part No.	Pcs. per lb.	Width AF	Height
¼–20	PM06679	110	7/16	1/4
5/16–18	PM06680	79	1/2	1/4
3/8–16	PM06681	55	9/16	5/16
7/16–14	PM06682	30	5/8	7/16
1/2–13	PM06683	23	3/4	15/32
5/8–11	PM04698	9	7/8	17/32
3/4–10	PM04699	8	1	19/32

Grade 2 Flat Washers – SAE

Color: SILVER



*Shipped in 10-lb. packages.

Size	Part No.	Pcs. per lb.	I.D.	O.D.	Thickness
¼	PM50145	220	0.281	0.625	0.065
⅝	PM50146	192	0.344	0.688	0.065
⅜	PM50147	139	0.406	0.812	0.065
⅞	PM50148	97	0.469	0.922	0.065
½	PM50149	55	0.531	1.062	0.095
⅝	PM50150	43	0.594	1.156	0.095
⅝	PM50151	36	0.656	1.312	0.095
¾	PM50152	27	0.812	1.469	0.134
⅞	PM50153	16	0.938	1.750	0.134
1	PM50154	12	1.062	2.000	0.134

Grade 2 Flat Washers – USS

Color: SILVER



*Shipped in 10-lb. packages.

Size	Part No.	Pcs. per lb.	I.D.	O.D.	Thickness
#10	PM50193	357	0.250	0.562	0.049
¼	PM04560	134	0.312	0.734	0.065
⅝	PM04561	78	0.375	0.875	0.083
⅜	PM04562	60	0.438	1.000	0.083
⅞	PM04563	37	0.500	1.250	0.083
½	PM04564	23	0.562	1.375	0.109
⅝	PM08426	20	0.625	1.469	0.109
⅝	PM04565	12	0.688	1.750	0.134
¾	PM04566	8	0.812	2.000	0.148
⅞	PM08427	6	0.938	2.250	0.165
1	PM08428	5	1.062	2.500	0.165
1⅝	PM08429	4	1.250	2.750	0.165
1¼	PM08430	3	1.375	3.000	0.165
1⅝	PM04011	3	1.500	3.250	0.165
1½	PM04012	2	1.625	3.500	0.165
1¾	PM04013	2	1.875	4.000	0.165
2	PM04014	2	2.125	4.500	0.165

Grade 8 Thick Flat Washers – USS

Color: YELLOW ZINC



*Shipped in 5-lb. packages.

Size	Part No.	Pcs. per lb.	I.D.	O.D.	Thickness
¼	PM55376	140	0.73	0.319	0.083
⅝	PM55377	90	0.878	0.385	0.091
⅜	PM55378	72	0.995	0.454	0.09
⅞	PM55379	40	1.25	0.51	0.095
½	PM55380	24	1.377	0.56	0.14
⅝	PM55381	20	1.475	0.628	0.142
⅝	PM55382	12	1.744	0.718	0.158
¾	PM55383	10	2.2	1.035	0.359

Grade 2 Flat Washers – Heavy SAE

Color: SILVER



Designed to be used with plow bolts.
Can also be used for other applications.

*Shipped in 10-lb. packages.

Size	Part No.	Pcs. per lb.	I.D.	O.D.	Thickness
⅝	PM06712	67	0.406	0.812	0.08
⅞	PM06713	51	0.469	0.922	0.08
½	PM06714	22	0.531	1.062	0.12
⅝	PM06715	13	0.656	1.312	0.15
¾	PM06716	10	0.812	1.469	0.15

Fender Washers

Color: SILVER



*Shipped in 5-lb. packages.

Size	Part No.	Pcs. per lb.	I.D.	O.D.	Thickness
⅝ x 1	PM50184	76	0.219	1.000	0.049
¼ x 1	PM50185	77	0.281	1.000	0.049
¼ x 1¼	PM50186	50	0.281	1.250	0.049
¼ x 1½	PM50187	34	0.281	1.500	0.049
⅝ x 1¼	PM50188	53	0.344	1.250	0.049
⅝ x 1½	PM50189	33	0.344	1.500	0.049
⅝ x 1½	PM50190	35	0.406	1.500	0.049
½ x 2	PM50191	19	0.531	2.000	0.060

Lock Washers – Split

Color: SILVER



Medium alloy steel.

*Shipped in 10-lb. packages.

Size	Part No.	Pcs. per lb.	I.D.	O.D.	Thickness
¼	PM04570	415	0.262	0.489	0.062
⅝	PM04571	245	0.326	0.586	0.078
⅜	PM04572	151	0.390	0.683	0.094
⅞	PM04573	96	0.455	0.779	0.109
½	PM04574	91	0.518	0.873	0.125
⅝	PM50155	58	0.582	0.971	0.141
⅝	PM04575	42	0.650	1.079	0.156
¾	PM04576	25	0.775	1.271	0.188
⅞	PM50156	18	0.905	1.464	0.219
1	PM50157	12	1.042	1.661	0.250

Non-Hardened Hex Bolt Assortment

¼–½-in. Diameter

Coarse Thread / Color: SILVER

Non-Hardened Hex Bolt Assortment "HARDWARE ONLY" Part No. PMP8421-095

*Shipped in 10-lb. packages.



Size	Part No.	Pcs. per lb.
¼ x ½	PM08320	82
¼ x ¾	PM04350	69
¼ x 1	PM04351	56
¼ x 1¼	PM04352	47
¼ x 1½	PM04353	40
¼ x 2	PM04354	30
¼ x 2½	PM04355	26
¼ x 3	PM04356	22
¼ x 3½	PM04357	19
¼ x 4	PM04358	18
¼ x 4½	PM04359	16
¼ x 5	PM04360	14
¼ x 5½	PM04361	13
¼ x 6	PM04362	12
⅝ x 1	PM04366	36
⅝ x 1¼	PM04367	32
⅝ x 1½	PM04368	26
⅝ x 2	PM04369	21
⅝ x 2½	PM04370	17
⅝ x 3	PM04371	15
⅝ x 3½	PM04372	13
⅝ x 4	PM04373	11
⅝ x 4½	PM04374	10
⅝ x 5	PM04375	9
⅝ x 5½	PM04376	8
⅝ x 6	PM04377	8
¾ x ¾	PM04380	29
¾ x 1	PM04381	25
¾ x 1¼	PM04382	22
¾ x 1½	PM04383	19
¾ x 2	PM04384	14
¾ x 2½	PM04385	12
¾ x 3	PM04386	10
¾ x 3½	PM04387	8
¾ x 4	PM04388	7
¾ x 4½	PM04389	7
¾ x 5	PM04390	6
¾ x 5½	PM04391	6
¾ x 6	PM04392	5
¾ x 7	PM04393	4
¾ x 8	PM04395	4

Size	Part No.	Pcs. per lb.
⅜ x 10	PM04397	3
⅞ x 1	PM04398	17
⅞ x 1½	PM04399	13
⅞ x 2	PM04400	10
⅞ x 2½	PM04401	8
⅞ x 3	PM04402	7
⅞ x 3½	PM04403	6
⅞ x 4	PM04404	5
⅞ x 5	PM04406	5
⅞ x 6	PM04407	4
½ x 1	PM04410	12
½ x 1½	PM04412	9
½ x 2	PM04413	7
½ x 2½	PM04414	6
½ x 3	PM04415	5
½ x 3½	PM04416	5
½ x 4	PM04417	4
½ x 4½	PM04418	4
½ x 5	PM04419	3
½ x 6	PM04421	3
½ x 7	PM04423	2
½ x 8	PM04424	2
Nuts – Hex – Grade 2		
¼–20	PM04670	146
⅝–18	PM04671	90
¾–16	PM04672	63
⅞–14	PM04673	38
½–13	PM04674	27
Flat Washers – USS – Grade 2		
¼	PM04560	134
⅝	PM04561	78
¾	PM04562	60
⅞	PM04563	37
½	PM04564	23
Lock Washers – Grade 2		
¼	PM04570	415
⅝	PM04571	245
¾	PM04572	151
⅞	PM04573	96
½	PM04574	91

Grade 10.9 Metric Fasteners

MEET OR EXCEED SAE J1061 and SAE J1199
SPECIFICATIONS, MINIMUM
TENSILE STRENGTH — 150,800 psi
PROOF LOAD — 120,350 psi

Grade 10.9 Metric Bolts — Hex

Coarse Thread / Color: BLACK

These fasteners are of medium carbon-alloy steel (comparable to SAE Grade 8). The **head marking has the property class** (grade) stamped on the head, together with the manufacturer's identification symbol.

*All bulk metric Grade 10.9 fasteners ship in 5-lb. packages.



Note: Bulk hardware meets ANSI specifications for hardness, tensile strength, and proof load. This product can be used for the warranty repairs of John Deere equipment.

Size	Part No.	Pcs. per lb.
M6 x 1.00 x 12	PM06416	101
M6 x 1.00 x 16	PM06417	88
M6 x 1.00 x 25	PM06418	67
M6 x 1.00 x 30	PM06419	55
M6 x 1.00 x 40	PM06420	50
M6 x 1.00 x 50	PM06421	38
M8 x 1.25 x 12	PM06422	49
M8 x 1.25 x 16	PM06423	44
M8 x 1.25 x 20	PM06424	37
M8 x 1.25 x 25	PM06425	34
M8 x 1.25 x 30	PM06426	31
M8 x 1.25 x 35	PM06427	28
M8 x 1.25 x 40	PM06428	25
M8 x 1.25 x 45	PM06429	22
M8 x 1.25 x 50	PM06430	22
M8 x 1.25 x 55	PM06431	20
M8 x 1.25 x 70	PM06432	15
M8 x 1.25 x 80	PM06433	14
M8 x 1.25 x 100	PM06434	11
M10 x 1.50 x 16	PM06435	23
M10 x 1.50 x 20	PM06436	21
M10 x 1.50 x 25	PM06437	19
M10 x 1.50 x 30	PM06438	17
M10 x 1.50 x 35	PM06439	16
M10 x 1.50 x 40	PM06440	14
M10 x 1.50 x 45	PM06441	13
M10 x 1.50 x 50	PM06442	13
M10 x 1.50 x 55	PM06443	11
M10 x 1.50 x 60	PM06444	11
M10 x 1.50 x 65	PM06445	10
M10 x 1.50 x 70	PM06446	9
M10 x 1.50 x 80	PM06447	8
M10 x 1.50 x 85	PM06448	8
M10 x 1.50 x 90	PM06449	7
M10 x 1.50 x 100	PM06450	7

Size	Part No.	Pcs. per lb.
M10 x 1.50 x 110	PM06451	6
M10 x 1.50 x 120	PM06452	6
M12 x 1.75 x 20	PM06453	15
M12 x 1.75 x 25	PM06454	13
M12 x 1.75 x 30	PM06455	12
M12 x 1.75 x 35	PM06456	11
M12 x 1.75 x 40	PM06457	10
M12 x 1.75 x 45	PM06458	9
M12 x 1.75 x 50	PM06459	9
M12 x 1.75 x 55	PM06460	8
M12 x 1.75 x 60	PM06461	7
M12 x 1.75 x 65	PM06462	7
M12 x 1.75 x 70	PM06463	6
M12 x 1.75 x 80	PM06464	6
M12 x 1.75 x 85	PM06465	5
M12 x 1.75 x 90	PM06466	5
M12 x 1.75 x 100	PM06467	5
M12 x 1.75 x 110	PM06468	4
M12 x 1.75 x 120	PM06469	4
M12 x 1.75 x 130	PM06470	4
M12 x 1.75 x 140	PM06471	3
M12 x 1.75 x 150	PM06472	3
M16 x 2.00 x 30	PM06473	6
M16 x 2.00 x 35	PM06474	5
M16 x 2.00 x 40	PM06475	5
M16 x 2.00 x 45	PM06476	5
M16 x 2.00 x 55	PM06477	4
M16 x 2.00 x 60	PM06478	4
M16 x 2.00 x 65	PM06479	4
M16 x 2.00 x 70	PM06480	3
M16 x 2.00 x 80	PM06481	3
M16 x 2.00 x 90	PM06482	3
M16 x 2.00 x 100	PM06483	3
M16 x 2.00 x 110	PM06484	2
M16 x 2.00 x 120	PM06485	2

Grade 10.9 Metric Bolts — Hex Coarse Thread / Color: BLACK

(continued)

*All bulk metric Grade 10.9 fasteners ship in 5-lb. packages.



Size	Part No.	Pcs. per lb.
M16 x 2.00 x 130	PM06486	2
M16 x 2.00 x 140	PM06487	2
M16 x 2.00 x 150	PM06488	2
M16 x 2.00 x 160	PM06489	2
M16 x 2.00 x 170	PM06490	2
M16 x 2.00 x 180	PM06491	2
M16 x 2.00 x 200	PM06492	1
M20 x 2.50 x 40	PM06493	3
M20 x 2.50 x 45	PM06495	3
M20 x 2.50 x 50	PM06494	3
M20 x 2.50 x 55	PM06496	3
M20 x 2.50 x 60	PM06497	2
M20 x 2.50 x 65	PM06498	2
M20 x 2.50 x 70	PM06499	2
M20 x 2.50 x 80	PM06500	2
M20 x 2.50 x 90	PM06501	2
M20 x 2.50 x 100	PM06502	2
M20 x 2.50 x 110	PM06503	2
M20 x 2.50 x 120	PM06504	1
M20 x 2.50 x 130	PM06505	1
M20 x 2.50 x 140	PM06506	1
M20 x 2.50 x 150	PM06507	1
M20 x 2.50 x 160	PM06508	1
M20 x 2.50 x 170	PM06509	1
M20 x 2.50 x 180	PM06510	1
M20 x 2.50 x 200	PM06511	1
M20 x 2.50 x 220	PM06512	1
M20 x 2.50 x 240	PM06513	1

Grade 10.9 Metric Nuts — Hex Coarse Thread / Color: BLACK

To be used with Grade 10.9 metric hex bolts.

*All bulk metric Grade 10.9 fasteners ship in 5-lb. packages.



Size	Part No.	Pcs. per lb.	Width AF	Height
M6 x 1.00	PM06514	216	10	5
M8 x 1.25	PM06515	96	13	6.5
M10 x 1.50	PM06516	45	17	8
M12 x 1.75	PM06517	30	19	10
M16 x 2.00	PM06518	15	24	13
M20 x 2.50	PM06519	8	30	16

Grade 10.9 Metric Lock Washers — Split Color: BLACK

To be used with Grade 10.9 metric hex bolts.

*All bulk metric Grade 10.9 fasteners ship in 5-lb. packages.



Size	Part No.	Pcs. per lb.	I.D.	O.D.	Thickness
6mm	PM06520	539	6.1	11.8	1.6
8mm	PM06521	273	8.1	14.8	2
10mm	PM06522	171	10.2	18.1	2.2
12mm	PM06523	115	12.2	21.1	2.5
16mm	PM06524	52	18.2	27.4	3.5
20mm	PM06525	31	20.2	33.5	4

Grade 10.9 Metric Flat Washers — Standard Color: BLACK

Hardened alloy steel. To be used with Grade 10.9 metric hex bolts.

*All bulk metric Grade 10.9 fasteners ship in 5-lb. packages.



Size	Part No.	Pcs. per lb.	I.D.	O.D.	Thickness
6mm	PM06526	531	6.4	12	1.6
8mm	PM06527	270	8.4	16	1.6
10mm	PM06528	151	10.5	20	2
12mm	PM06529	81	13	24	2.5
16mm	PM06530	40	17	30	3
20mm	PM06531	30	21	37	3

Grade 10.9 Metric Bolts — Flange

Coarse Thread / Color: BLACK

The **head marking** has the property class (grade) stamped on the head. The flanged head distributes load over a larger area.

**All bulk metric Grade 10.9 fasteners ship in 5-lb. packages.*



Size	Part No.	Pcs. per lb.
M6 x 1.00 x 10	PM06532	79
M6 x 1.00 x 12	PM06533	74
M6 x 1.00 x 16	PM06534	66
M6 x 1.00 x 20	PM06535	61
M6 x 1.00 x 25	PM06536	54
M6 x 1.00 x 30	PM06537	49
M6 x 1.00 x 35	PM06538	40
M6 x 1.00 x 40	PM06539	38
M6 x 1.00 x 45	PM06540	35
M6 x 1.00 x 50	PM06541	31
M8 x 1.25 x 12	PM06542	56
M8 x 1.25 x 16	PM06543	41
M8 x 1.25 x 20	PM06544	37
M8 x 1.25 x 25	PM06545	28
M8 x 1.25 x 30	PM06546	26
M8 x 1.25 x 35	PM06547	25
M8 x 1.25 x 40	PM06548	23
M8 x 1.25 x 45	PM06549	20
M8 x 1.25 x 50	PM06550	18
M8 x 1.25 x 60	PM06551	17
M8 x 1.25 x 70	PM06552	16
M8 x 1.25 x 80	PM06553	15
M10 x 1.50 x 16	PM06555	21
M10 x 1.50 x 20	PM06556	20
M10 x 1.50 x 25	PM06557	18
M10 x 1.50 x 30	PM06558	16
M10 x 1.50 x 35	PM06559	14
M10 x 1.50 x 40	PM06560	13
M10 x 1.50 x 45	PM06561	12
M10 x 1.50 x 50	PM06562	11
M10 x 1.50 x 60	PM06563	10
M10 x 1.50 x 70	PM06564	8
M10 x 1.50 x 80	PM06565	8
M10 x 1.50 x 90	PM06566	7
M10 x 1.50 x 100	PM06567	6

Size	Part No.	Pcs. per lb.
M12 x 1.75 x 20	PM06568	11
M12 x 1.75 x 25	PM06569	10
M12 x 1.75 x 30	PM06570	9
M12 x 1.75 x 35	PM06571	8
M12 x 1.75 x 40	PM06572	7
M12 x 1.75 x 45	PM06573	7
M12 x 1.75 x 50	PM06574	6
M12 x 1.75 x 60	PM06576	6
M12 x 1.75 x 70	PM06577	5
M12 x 1.75 x 80	PM06686	6
M12 x 1.75 x 90	PM06578	5
M12 x 1.75 x 100	PM06579	4
M16 x 2.00 x 30	PM06580	5
M16 x 2.00 x 35	PM06581	4
M16 x 2.00 x 40	PM06582	3
M16 x 2.00 x 45	PM06583	3
M16 x 2.00 x 50	PM06584	2
M16 x 2.00 x 60	PM06585	2
M16 x 2.00 x 70	PM06586	1
M16 x 2.00 x 80	PM06587	1
M16 x 2.00 x 90	PM06588	1
M16 x 2.00 x 100	PM06589	1

Grade 10.9 Metric Nuts — Flange

Coarse Thread / Color: BLACK

To be used with Grade 10.9 metric flange bolts.

**All bulk metric Grade 10.9 fasteners ship in 5-lb. packages.*



Size	Part No.	Pcs. per lb.	Width AF	Height
M6 x 1.00	PM06590	126	9.85	5.88
M8 x 1.25	PM06591	64	12.8	7.82
M10 x 1.50	PM06592	38	14.8	9.78
M12 x 1.75	PM06593	22	17.85	11.85
M16 x 2.00	PM06594	9	23.75	15.7



Grade 10.9 Metric Hex Bolt Assortment M6–M12 Diameter “A” Assortment Coarse Thread / Color: BLACK

Grade 10.9 Metric “A” Assortment Part No. PM15481 includes all the parts listed below, 72-hole metal bin (pictured), and labels. Metal base Part No. PM15464 is optional.

Grade 10.9 Metric “A” Assortment “Hardware only” Part No. PM15487

**All bulk metric Grade 10.9 fasteners ship in 5-lb. packages.*

Size	Part No.	Pcs. per lb.
72-hole metal bin	PM15464	1
Labels	Included	1
M6 x 1.00 x 12	PM06416	101
M6 x 1.00 x 16	PM06417	88
M6 x 1.00 x 25	PM06418	67
M6 x 1.00 x 30	PM06419	55
M6 x 1.00 x 40	PM06420	50
M6 x 1.00 x 50	PM06421	38
M8 x 1.25 x 12	PM06422	49
M8 x 1.25 x 16	PM06423	44
M8 x 1.25 x 20	PM06424	37
M8 x 1.25 x 25	PM06425	34
M8 x 1.25 x 30	PM06426	31
M8 x 1.25 x 35	PM06427	28
M8 x 1.25 x 40	PM06428	25
M8 x 1.25 x 45	PM06429	22
M8 x 1.25 x 50	PM06430	22
M8 x 1.25 x 55	PM06431	20
M8 x 1.25 x 70	PM06432	15
M8 x 1.25 x 80	PM06433	14
M8 x 1.25 x 100	PM06434	11
M10 x 1.50 x 16	PM06435	23
M10 x 1.50 x 20	PM06436	21
M10 x 1.50 x 25	PM06437	19
M10 x 1.50 x 30	PM06438	17
M10 x 1.50 x 35	PM06439	16
M10 x 1.50 x 40	PM06440	14
M10 x 1.50 x 45	PM06441	13
M10 x 1.50 x 50	PM06442	13
M10 x 1.50 x 55	PM06443	11
M10 x 1.50 x 60	PM06444	11
M10 x 1.50 x 65	PM06445	10

Size	Part No.	Pcs. per lb.
M10 x 1.50 x 70	PM06446	9
M10 x 1.50 x 80	PM06447	8
M10 x 1.50 x 90	PM06449	7
M10 x 1.50 x 100	PM06450	7
M12 x 1.75 x 20	PM06453	15
M12 x 1.75 x 25	PM06454	13
M12 x 1.75 x 30	PM06455	12
M12 x 1.75 x 35	PM06456	11
M12 x 1.75 x 40	PM06457	10
M12 x 1.75 x 45	PM06458	9
M12 x 1.75 x 50	PM06459	9
M12 x 1.75 x 60	PM06461	7
M12 x 1.75 x 70	PM06463	6
M12 x 1.75 x 80	PM06464	6
M12 x 1.75 x 90	PM06466	5
M12 x 1.75 x 100	PM06467	5

Hex Nuts

M6 x 1.00	PM06514	216
M8 x 1.25	PM06515	96
M10 x 1.50	PM06516	45
M12 x 1.75	PM06517	30

Lock Washers

6mm	PM06520	539
8mm	PM06521	273
10mm	PM06522	171
12mm	PM06523	115

Flat Washers

6mm	PM06526	531
8mm	PM06527	270
10mm	PM06528	151
12mm	PM06529	81

Grade 10.9 Metric Hex Bolt Assortment M16–M20 Diameter “B” Assortment Coarse Thread / Color: BLACK

Grade 10.9 Metric “B” Assortment Part No. PM15482 includes all the parts listed below, 40-hole metal bin (pictured), and labels. Metal base Part No. PM15464 is optional.



Grade 10.9 Metric “B” Assortment “Hardware only” Part No. PM15488

**All bulk metric Grade 10.9 fasteners ship in 5-lb. packages.*

Size	Part No.	Pcs. per lb.
40-hole metal bin	PM15463	1
Labels	Included	1
M16 x 2.00 x 30	PM06473	6
M16 x 2.00 x 35	PM06474	5
M16 x 2.00 x 40	PM06475	5
M16 x 2.00 x 45	PM06476	5
M16 x 2.00 x 55	PM06477	4
M16 x 2.00 x 60	PM06478	4
M16 x 2.00 x 65	PM06479	4
M16 x 2.00 x 70	PM06480	3
M16 x 2.00 x 80	PM06481	3
M16 x 2.00 x 90	PM06482	3
M16 x 2.00 x 100	PM06483	3
M20 x 2.50 x 40	PM06493	3
M20 x 2.50 x 45	PM06495	3
M20 x 2.50 x 50	PM06494	3
M20 x 2.50 x 55	PM06496	3
M20 x 2.50 x 60	PM06497	2
M20 x 2.50 x 65	PM06498	2

Size	Part No.	Pcs. per lb.
M20 x 2.50 x 70	PM06499	2
M20 x 2.50 x 80	PM06500	2
M20 x 2.50 x 90	PM06501	2
M20 x 2.50 x 100	PM06502	2
M20 x 2.50 x 110	PM06503	2
M20 x 2.50 x 120	PM06504	1
M20 x 2.50 x 130	PM06505	1
M20 x 2.50 x 140	PM06506	1
M20 x 2.50 x 150	PM06507	1
Hex Nuts		
M16 x 2.00	PM06518	15
M20 x 2.50	PM06519	8
Lock Washers		
16mm	PM06524	52
20mm	PM06525	31
Flat Washers		
16mm	PM06530	40
20mm	PM06531	30



Grade 10.9 Metric Flange Bolt Assortment M6–M12 Diameter Coarse Thread / Color: BLACK

Grade 10.9 Metric Flange Bolt Assortment Part No. PM15480 includes all the parts listed below, 40-hole metal bin (pictured), and labels. Metal base Part No. PM15464 is optional.

Grade 10.9 Metric Flange Bolt Assortment "Hardware only" Part No. PM15486

**All bulk metric Grade 10.9 fasteners ship in 5-lb. packages.*

Size	Part No.	Pcs. per lb.
40-hole metal bin	PM15463	
Labels	Included	1
M6 x 1.00 x 10	PM06532	79
M6 x 1.00 x 12	PM06533	74
M6 x 1.00 x 16	PM06534	66
M6 x 1.00 x 20	PM06535	61
M6 x 1.00 x 25	PM06536	54
M6 x 1.00 x 30	PM06537	49
M6 x 1.00 x 40	PM06539	38
M6 x 1.00 x 50	PM06541	31
M8 x 1.25 x 12	PM06542	56
M8 x 1.25 x 16	PM06543	41
M8 x 1.25 x 20	PM06544	37
M8 x 1.25 x 25	PM06545	28
M8 x 1.25 x 30	PM06546	26
M8 x 1.25 x 35	PM06547	25
M8 x 1.25 x 40	PM06548	23
M8 x 1.25 x 50	PM06550	18
M8 x 1.25 x 60	PM06551	17
M8 x 1.25 x 70	PM06552	16
M10 x 1.50 x 16	PM06555	21
M10 x 1.50 x 20	PM06556	20

Size	Part No.	Pcs. per lb.
M10 x 1.50 x 25	PM06557	18
M10 x 1.50 x 30	PM06558	16
M10 x 1.50 x 35	PM06559	14
M10 x 1.50 x 40	PM06560	13
M10 x 1.50 x 45	PM06561	12
M10 x 1.50 x 50	PM06562	11
M10 x 1.50 x 60	PM06563	10
M10 x 1.50 x 70	PM06564	8
M12 x 1.75 x 20	PM06568	11
M12 x 1.75 x 25	PM06569	10
M12 x 1.75 x 30	PM06570	9
M12 x 1.75 x 35	PM06571	8
M12 x 1.75 x 40	PM06572	7
M12 x 1.75 x 50	PM06574	6
M12 x 1.75 x 60	PM06576	6
M12 x 1.75 x 70	PM06577	5
Flange Nuts		
M6 x 1.00	PM06590	126
M8 x 1.25	PM06591	64
M10 x 1.50	PM06592	38
M12 x 1.75	PM06593	22

Grade 8.8 Metric Fasteners

MEET OR EXCEED SAE J1061 and SAE J1199
SPECIFICATIONS, MINIMUM
TENSILE STRENGTH – 120,350 psi

Grade 8.8 Metric Bolts – Hex

Coarse Thread / Color: RED

These fasteners are of medium carbon steel (comparable to SAE Grade 5). The **head marking has the property class** (grade) stamped on the head, together with the manufacturer's identification symbol.

*All bulk metric Grade 8.8 fasteners ship in 5-lb. packages.



Note: Bulk hardware meets ANSI specifications for hardness, tensile strength, and proof load. This product can be used for the warranty repairs of John Deere equipment.

Size	Part No.	Pcs. per lb.
M6 x 1.00 x 10	PM06337	109
M6 x 1.00 x 12	PM06338	103
M6 x 1.00 x 16	PM05995	90
M6 x 1.00 x 20	PM05996	80
M6 x 1.00 x 25	PM05997	68
M6 x 1.00 x 30	PM05998	60
M6 x 1.00 x 35	PM05999	54
M6 x 1.00 x 40	PM06000	49
M6 x 1.00 x 45	PM06001	45
M6 x 1.00 x 50	PM06339	36
M6 x 1.00 x 55	PM06340	33
M6 x 1.00 x 60	PM06341	32
M6 x 1.00 x 70	PM06342	27
M6 x 1.00 x 80	PM06343	24
M8 x 1.25 x 10	PM06344	50
M8 x 1.25 x 16	PM06345	43
M8 x 1.25 x 20	PM06002	38
M8 x 1.25 x 25	PM06003	34
M8 x 1.25 x 30	PM06004	31
M8 x 1.25 x 35	PM06005	28
M8 x 1.25 x 40	PM06006	26
M8 x 1.25 x 45	PM06007	24
M8 x 1.25 x 50	PM06008	22
M8 x 1.25 x 55	PM06009	19
M8 x 1.25 x 60	PM06010	17
M8 x 1.25 x 70	PM06346	15
M8 x 1.25 x 80	PM06347	13
M8 x 1.25 x 90	PM06348	12
M8 x 1.25 x 100	PM06349	11
M10 x 1.50 x 16	PM06350	23
M10 x 1.50 x 20	PM06011	21
M10 x 1.50 x 25	PM06012	19
M10 x 1.50 x 30	PM06013	17
M10 x 1.50 x 35	PM06014	16
M10 x 1.50 x 40	PM06015	15
M10 x 1.50 x 45	PM06016	14

Size	Part No.	Pcs. per lb.
M10 x 1.50 x 50	PM06017	13
M10 x 1.50 x 55	PM06351	11
M10 x 1.50 x 60	PM06018	10
M10 x 1.50 x 70	PM06019	9
M10 x 1.50 x 75	PM06352	9
M10 x 1.50 x 80	PM06020	8
M10 x 1.50 x 90	PM06021	7
M10 x 1.50 x 100	PM06353	7
M10 x 1.50 x 110	PM06354	6
M10 x 1.50 x 120	PM06355	6
M10 x 1.50 x 130	PM06356	5
M10 x 1.50 x 150	PM06357	5
M12 x 1.75 x 16	PM06358	15
M12 x 1.75 x 20	PM06359	14
M12 x 1.75 x 25	PM06022	13
M12 x 1.75 x 30	PM06023	12
M12 x 1.75 x 35	PM06024	11
M12 x 1.75 x 40	PM06025	10
M12 x 1.75 x 45	PM06026	9
M12 x 1.75 x 50	PM06027	9
M12 x 1.75 x 55	PM06360	8
M12 x 1.75 x 60	PM06028	7
M12 x 1.75 x 65	PM06361	6
M12 x 1.75 x 70	PM06029	7
M12 x 1.75 x 80	PM06030	6
M12 x 1.75 x 100	PM06032	5
M16 x 2.00 x 25	PM06362	6
M16 x 2.00 x 30	PM06363	6
M16 x 2.00 x 35	PM06364	5
M16 x 2.00 x 40	PM06049	5
M16 x 2.00 x 45	PM06365	5
M16 x 2.00 x 50	PM06050	4
M16 x 2.00 x 60	PM06051	4
M16 x 2.00 x 70	PM06052	3
M16 x 2.00 x 80	PM06053	3
M16 x 2.00 x 90	PM06054	3

Grade 8.8 Metric Bolts – Hex Coarse Thread / Color: RED

(continued)

*All bulk metric Grade 8.8 fasteners ship in 5-lb. packages.



Size	Part No.	Pcs. per lb.
M16 x 2.00 x 100	PM06055	3
M16 x 2.00 x 110	PM06056	2
M16 x 2.00 x 120	PM06057	2
M16 x 2.00 x 130	PM06058	2
M16 x 2.00 x 140	PM06059	2
M16 x 2.00 x 150	PM06060	2

Metric Flat Washers – Standard Color: RED

To be used with Grade 8.8 metric hex bolts.

*All bulk metric Grade 8.8 fasteners ship in 5-lb. packages.

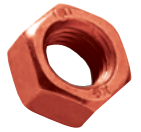


Size	Part No.	Pcs. per lb.	I.D.	O.D.	Thickness
6mm	PM06067	536	6.4	12	1.6
8mm	PM06068	285	8.4	16	1.6
10mm	PM06069	136	10.5	20	2
12mm	PM06070	82	13	24	2.5
16mm	PM06072	45	17	30	3

Grade 8.8 Metric Nuts – Hex Coarse Thread / Color: RED

To be used with Grade 8.8 metric hex bolts.

*All bulk metric Grade 8.8 fasteners ship in 5-lb. packages.



Size	Part No.	Pcs. per lb.	Width AF	Height
M6 x 1.00	PM06061	218	10	5
M8 x 1.25	PM06062	94	13	6.5
M10 x 1.50	PM06063	45	17	8
M12 x 1.75	PM06064	31	19	10
M16 x 2.00	PM06066	16	24	13

Metric Lock Washers – Split Color: RED

To be used with Grade 8.8 metric hex bolts.

*All bulk metric Grade 8.8 fasteners ship in 5-lb. packages.



Size	Part No.	Pcs. per lb.	I.D.	O.D.	Thickness
6mm	PM06073	488	6.1	11.8	1.6
8mm	PM06074	247	8.1	14.8	2
10mm	PM06075	204	10.2	18.1	2.2
12mm	PM06076	118	12.2	21.1	2.5
16mm	PM06078	52	18.2	27.4	3.5

Metric Nylon Lock Nuts Coarse Thread / Color: BLACK

*Shipped in 5-lb. packages.

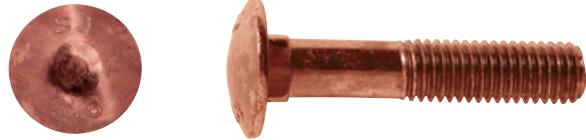


Size	Part No.	Pcs. per lb.	Width AF	Height
M6 x 1.00	PM03904	27	10	8
M8 x 1.25	PM03905	18	13	9.5
M10 x 1.50	PM03906	11	16	11.9
M12 x 1.75	PM03907	10	18	14.9
M16 x 2.00	PM03908	5	24	19.1
M20 x 2.50	PM03909	4	30	22.8

Grade 8.8 Metric Bolts – Carriage Coarse Thread / Color: RED

These fasteners are of medium carbon steel (comparable to SAE Grade 5). The **head marking has the property class** (grade) stamped on the head.

**All bulk metric Grade 8.8 fasteners ship in 5-lb. packages.*



Note: Bulk hardware meets ANSI specifications for hardness, tensile strength, and proof load. This product can be used for the warranty repairs of John Deere equipment.

Size	Part No.	Pcs. per lb.
M6 x 1.00 x 12	PM06366	95
M6 x 1.00 x 16	PM06367	84
M6 x 1.00 x 20	PM06368	73
M6 x 1.00 x 25	PM06369	56
M6 x 1.00 x 30	PM06370	52
M6 x 1.00 x 35	PM06371	48
M6 x 1.00 x 45	PM06372	40
M6 x 1.00 x 50	PM06373	37
M8 x 1.25 x 16	PM06374	44
M8 x 1.25 x 20	PM06375	39
M8 x 1.25 x 25	PM06376	35
M8 x 1.25 x 30	PM06377	31
M8 x 1.25 x 35	PM06378	28
M8 x 1.25 x 40	PM06379	26
M8 x 1.25 x 45	PM06380	23
M8 x 1.25 x 50	PM06381	22
M8 x 1.25 x 55	PM06382	19
M8 x 1.25 x 60	PM06383	18
M8 x 1.25 x 70	PM06384	17
M8 x 1.25 x 80	PM06385	14
M10 x 1.50 x 20	PM06386	22
M10 x 1.50 x 25	PM06387	20
M10 x 1.50 x 30	PM06388	18
M10 x 1.50 x 35	PM06389	15
M10 x 1.50 x 40	PM06390	14

Size	Part No.	Pcs. per lb.
M10 x 1.50 x 45	PM06391	13
M10 x 1.50 x 50	PM06392	12
M10 x 1.50 x 55	PM06393	11
M10 x 1.50 x 60	PM06394	11
M10 x 1.50 x 70	PM06395	10
M10 x 1.50 x 80	PM06396	9
M12 x 1.75 x 20	PM06397	13
M12 x 1.75 x 25	PM06398	13
M12 x 1.75 x 30	PM06399	12
M12 x 1.75 x 35	PM06400	11
M12 x 1.75 x 40	PM06401	10
M12 x 1.75 x 45	PM06402	9
M12 x 1.75 x 50	PM06403	9
M12 x 1.75 x 55	PM06404	7
M12 x 1.75 x 60	PM06405	6
M12 x 1.75 x 70	PM06406	6
M12 x 1.75 x 80	PM06407	6
M12 x 1.75 x 90	PM06408	5
M12 x 1.75 x 100	PM06409	5
M16 x 2.00 x 40	PM06410	5
M16 x 2.00 x 45	PM06411	5
M16 x 2.00 x 50	PM06412	4
M16 x 2.00 x 60	PM06413	4
M16 x 2.00 x 70	PM06414	4
M16 x 2.00 x 80	PM06415	3



Grade 8.8 Metric Hex Bolt Assortment
M6–M12 Diameter “A” Assortment
Coarse Thread / Color: RED

Grade 8.8 Metric “A” Assortment Part No. PM15477 includes all the parts listed below, 72-hole metal bin (pictured), and labels. Metal base Part No. PM15464 is optional.

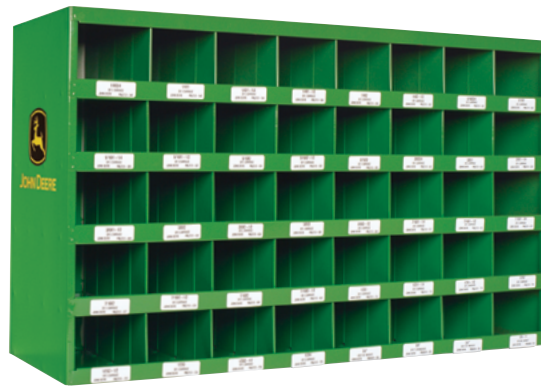
Grade 8.8 Metric “A” Assortment “Hardware only” Part No. PM15483

**All bulk metric Grade 8.8 fasteners ship in 5-lb. packages.*

Size	Part No.	Pcs. per lb.
72-hole metal bin	PM15462	1
Labels	Included	1
M6 x 1.00 x 10	PM06337	109
M6 x 1.00 x 12	PM06338	103
M6 x 1.00 x 16	PM05995	90
M6 x 1.00 x 20	PM05996	80
M6 x 1.00 x 25	PM05997	68
M6 x 1.00 x 30	PM05998	60
M6 x 1.00 x 35	PM05999	54
M6 x 1.00 x 40	PM06000	49
M6 x 1.00 x 45	PM06001	45
M6 x 1.00 x 50	PM06339	36
M6 x 1.00 x 55	PM06340	33
M6 x 1.00 x 60	PM06341	32
M6 x 1.00 x 70	PM06342	27
M6 x 1.00 x 80	PM06343	24
M8 x 1.25 x 10	PM06344	50
M8 x 1.25 x 16	PM06345	43
M8 x 1.25 x 20	PM06002	38
M8 x 1.25 x 25	PM06003	34
M8 x 1.25 x 30	PM06004	31
M8 x 1.25 x 35	PM06005	28
M8 x 1.25 x 40	PM06006	26
M8 x 1.25 x 45	PM06007	24
M8 x 1.25 x 50	PM06008	22
M8 x 1.25 x 55	PM06009	19
M8 x 1.25 x 60	PM06010	17
M8 x 1.25 x 70	PM06346	15
M8 x 1.25 x 80	PM06347	13
M8 x 1.25 x 90	PM06348	12
M8 x 1.25 x 100	PM06349	11
M10 x 1.50 x 16	PM06350	23
M10 x 1.50 x 20	PM06011	21
M10 x 1.50 x 25	PM06012	19
M10 x 1.50 x 30	PM06013	17
M10 x 1.50 x 35	PM06014	16
M10 x 1.50 x 40	PM06015	15

(continued)

Size	Part No.	Pcs. per lb.
M10 x 1.50 x 45	PM06016	14
M10 x 1.50 x 50	PM06017	13
M10 x 1.50 x 55	PM06351	11
M10 x 1.50 x 60	PM06018	10
M10 x 1.50 x 70	PM06019	9
M10 x 1.50 x 75	PM06352	9
M10 x 1.50 x 80	PM06020	8
M10 x 1.50 x 90	PM06021	7
M10 x 1.50 x 100	PM06353	7
M12 x 1.75 x 16	PM06358	15
M12 x 1.75 x 20	PM06359	14
M12 x 1.75 x 25	PM06022	13
M12 x 1.75 x 30	PM06023	12
M12 x 1.75 x 35	PM06024	11
M12 x 1.75 x 40	PM06025	10
M12 x 1.75 x 45	PM06026	9
M12 x 1.75 x 50	PM06027	9
M12 x 1.75 x 55	PM06360	8
M12 x 1.75 x 60	PM06028	7
M12 x 1.75 x 65	PM06361	6
M12 x 1.75 x 70	PM06029	7
M12 x 1.75 x 80	PM06030	6
M12 x 1.75 x 100	PM06032	5
Hex Nuts		
M6 x 1.00	PM06061	218
M8 x 1.25	PM06062	94
M10 x 1.50	PM06063	45
M12 x 1.75	PM06064	31
Lock Washers		
6mm	PM06067	536
8mm	PM06068	285
10mm	PM06069	136
12mm	PM06070	82
Flat Washers		
6mm	PM06073	488
8mm	PM06074	247
10mm	PM06075	204
12mm	PM06076	118



Grade 8.8 Metric Hex Bolt Assortment "B" Assortment Coarse Thread / Color: RED

Grade 8.8 Metric "B" Assortment Part No. PM15478 includes all the parts listed below, 40-hole metal bin (pictured), and labels. Metal base Part No. PM15464 is optional.

Grade 8.8 Metric "B" Assortment "Hardware only" Part No. PM15484

**All bulk metric Grade 8.8 fasteners ship in 5-lb. packages.*

Size	Part No.	Pcs. per lb.
40-hole metal bin	PM15463	1
Labels	Included	1
M16 x 2.00 x 25	PM06362	6
M16 x 2.00 x 30	PM06363	6
M16 x 2.00 x 35	PM06364	5
M16 x 2.00 x 40	PM06049	5
M16 x 2.00 x 45	PM06365	5
M16 x 2.00 x 50	PM06050	4
M16 x 2.00 x 60	PM06051	4
M16 x 2.00 x 70	PM06052	3
M16 x 2.00 x 80	PM06053	3
M16 x 2.00 x 90	PM06054	3
M16 x 2.00 x 100	PM06055	3
M16 x 2.00 x 110	PM06056	2
M16 x 2.00 x 120	PM06057	2
M16 x 2.00 x 130	PM06058	2
M16 x 2.00 x 140	PM06059	2
M16 x 2.00 x 150	PM06060	2
Hex Nuts		
M16 x 2.00	PM06066	16
Lock Washers		
16mm	PM06072	45
Flat Washers		
16mm	PM06078	52
Nylon Lock Nuts		
M6 x 1.00	PM03904	27
M8 x 1.25	PM03905	18
M10 x 1.50	PM03906	11
M12 x 1.75	PM03907	10
M16 x 2.00	PM03908	5
M20 x 2.50	PM03909	4



Grade 8.8 Metric Carriage Bolt Assortment

M6–M16 Diameter
Coarse Thread / Color: RED

Grade 8.8 Metric Carriage Assortment Part No. PM15479 includes all the parts listed below, 40-hole metal bin (pictured), and labels. Metal base Part No. PM15464 is optional.

Grade 8.8 Metric Carriage Assortment "Hardware only" Part No. PM15485

**All bulk metric Grade 8.8 fasteners ship in 5-lb. packages.*

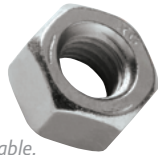
Size	Part No.	Pcs. per lb.
40-hole metal bin	PM15463	1
Labels	Included	1
M6 x 1.00 x 12	PM06366	95
M6 x 1.00 x 16	PM06367	84
M6 x 1.00 x 20	PM06368	73
M6 x 1.00 x 25	PM06369	56
M6 x 1.00 x 30	PM06370	52
M6 x 1.00 x 45	PM06372	40
M6 x 1.00 x 50	PM06373	37
M8 x 1.25 x 16	PM06374	44
M8 x 1.25 x 20	PM06375	39
M8 x 1.25 x 25	PM06376	35
M8 x 1.25 x 30	PM06377	31
M8 x 1.25 x 35	PM06378	28
M8 x 1.25 x 40	PM06379	26
M8 x 1.25 x 45	PM06380	23
M8 x 1.25 x 50	PM06381	22
M10 x 1.50 x 20	PM06386	22

Size	Part No.	Pcs. per lb.
M10 x 1.50 x 25	PM06387	20
M10 x 1.50 x 30	PM06388	18
M10 x 1.50 x 35	PM06389	15
M10 x 1.50 x 40	PM06390	14
M10 x 1.50 x 45	PM06391	13
M10 x 1.50 x 50	PM06392	12
M12 x 1.75 x 20	PM06397	13
M12 x 1.75 x 25	PM06398	13
M12 x 1.75 x 30	PM06399	12
M12 x 1.75 x 35	PM06400	11
M12 x 1.75 x 40	PM06401	10
M12 x 1.75 x 50	PM06403	9
M16 x 2.00 x 40	PM06410	5
M16 x 2.00 x 45	PM06411	5
M16 x 2.00 x 50	PM06412	4
M16 x 2.00 x 60	PM06413	4
M16 x 2.00 x 70	PM06414	4
M16 x 2.00 x 80	PM06415	3

Stainless Steel

Stainless Steel

An alloy steel containing at least 4-percent chromium that is corrosion and heat resistant; 18-8 stainless steel contains 18-percent chromium and 8-percent nickel and resists most corrosive agents in industrial applications. Commonly used in applications where food, drugs, medicines, liquids, or any material for human consumption may come into contact with the fastener; this is also the predominant fastener type used in marine applications.



Stainless Steel Nuts – Hex

**Shipped in a box quantity package as indicated in the table.*

Size	Part No.	Pcs. per box
4–40	PM50267	100
6–32	PM05265	100
8–32	PM05266	100
10–24	PM05267	100
10–32	PM05268	100
12–24	PM05269	100
¼ x 20	PM05270	100
⅝ x 18	PM05271	100
⅜ x 16	PM05272	100
⅜ x 24	PM05273	100
½ x 13	PM05274	100
⅝ x 11	PM05275	25
¾ x 10	PM05276	20

Stainless Steel Nuts – Nylon Lock

**Shipped in a box quantity package as indicated in the table.*

Size	Part No.	Pcs. per box
4–40	PMMF50257	100
6–32	PMMF05285	100
8–32	PMMF05286	100
10–24	PMMF05287	100
10–32	PMMF05288	100
¼ x 20	PMMF05289	100
⅝ x 18	PMMF05290	100
⅜ x 16	PMMF05291	50
½ x 13	PMMF05292	25

Stainless Steel Washers – Flat

**Shipped in a box quantity package as indicated in the table.*



Size	Part No.	Pcs. per box
#6	PM05320	100
#8	PM05321	100
#10	PM05322	100
¼	PM05323	100
⅝	PM05324	100
⅜	PM05325	100
½	PM50715	50
⅝	PM50716	25
¾	PM50717	20

Stainless Steel Washers – Split Lock

**Shipped in a box quantity package as indicated in the table.*



Size	Part No.	Pcs. per box
#6	PM05335	100
#8	PM05336	100
#10	PM05337	100
¼	PM05338	100
⅝	PM05339	100
⅜	PM05340	100
½	PM50718	50
⅝	PM50719	25

Stainless Steel Washers – Finish

**Shipped in a box quantity package as indicated in the table.*

Size	Part No.	Pcs. per box
#6	PMMF05345	100
#8	PMMF05346	100
#10	PMMF05347	100
#12	PMMF05348	100
#14	PMMF05349	100



Stainless Steel Screws – Hex Cap

*Shipped in a box quantity package as indicated in the table.

Size	Part No.	Pcs. per box
¼ x ½	PM50519	50
¼ x ⅝	PM50520	50
¼ x ¾	PM50521	50
¼ x 1	PM50522	50
¼ x 1¼	PM50523	50
¼ x 1½	PM50524	50
¼ x 2	PM50525	50
¼ x 2½	PM50526	50
¼ x 3	PM50527	50
¼ x 3½	PM50528	50
¼ x 4	PM50529	50
¼ x 4½	PM50530	50
¼ x 5	PM50531	50
¼ x 6	PM50532	50
⅝ ₁₆ x ¼	PM50533	50
⅝ ₁₆ x ½	PM50534	50
⅝ ₁₆ x ⅝	PM50535	50
⅝ ₁₆ x ¾	PM50536	50
⅝ ₁₆ x 1	PM50537	50
⅝ ₁₆ x 1¼	PM50538	50
⅝ ₁₆ x 1½	PM50539	50
⅝ ₁₆ x 2	PM50540	50
⅝ ₁₆ x 2½	PM50541	25
⅝ ₁₆ x 3	PM50542	25
⅝ ₁₆ x 3½	PM50543	25
⅝ ₁₆ x 4	PM50544	25
⅝ ₁₆ x 4½	PM50545	25
⅝ ₁₆ x 5	PM50546	25
⅝ ₁₆ x 6	PM50547	25
⅜ x ½	PM50548	50
⅜ x ⅝	PM50549	50
⅜ x ¾	PM50550	50
⅜ x 1	PMF50551	50
⅜ x 1¼	PM50552	50
⅜ x 1½	PM50553	50
⅜ x 2	PMF50554	25
⅜ x 2¼	PM50555	25
⅜ x 2½	PM50556	25
⅜ x 3	PM50557	25
⅜ x 3½	PM50558	25
⅜ x 4	PM50559	25
⅜ x 4½	PM50560	25
⅜ x 5	PM50561	25
⅜ x 6	PM50562	25

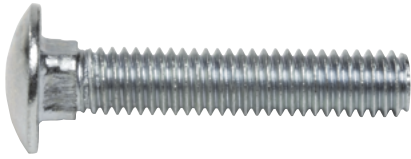
Size	Part No.	Pcs. per box
½ x ¾	PM50563	25
½ x 1	PM50564	25
½ x 1¼	PM50565	25
½ x 1½	PM50566	25
½ x 2	PM50567	25
½ x 2½	PM50568	20
½ x 3	PM50569	15
½ x 3½	PM50570	10
½ x 4	PM50571	10
½ x 4½	PM50572	10
½ x 5	PM50573	10
½ x 6	PM50574	10
⅝ x 1	PM50575	10
⅝ x 1½	PM50576	10
⅝ x 2	PM50577	10
⅝ x 2½	PM50578	10
⅝ x 3	PM50579	10
⅝ x 3½	PM50580	10
⅝ x 4	PM50581	10
⅝ x 4½	PM50582	10
⅝ x 5	PM50583	10
⅝ x 5½	PM50584	10
⅝ x 6	PM50585	10



Stainless Steel Washers – Fender

*Shipped in a box quantity package as indicated in the table.

Size	Part No.	Pcs. per box
⅝ ₃₂ x ⅞	PMMF07575	100
¾ ₁₆ x 1	PMMF07576	100
¾ ₁₆ x 1¼	PMMF07577	100
¼ x 1	PMMF07578	100
¼ x 1¼	PMMF07579	100
¼ x 1½	PMMF07580	100
⅝ ₁₆ x 1½	PMMF07581	100
⅜ x 1½	PMMF07582	50
½ x 2	PMMF07583	50



Stainless Steel Bolts – Carriage

*Shipped in a box quantity package as indicated in the table.

Size	Part No.	Pcs. per box
¼ x ¾	PMMF50586	50
¼ x 1	PMMF50587	50
¼ x 1¼	PMMF50588	50
¼ x 1½	PMMF50589	50
¼ x 2	PMMF50590	50
¼ x 2½	PMMF50591	50
¼ x 3	PMMF50592	50
¼ x 3½	PMMF50593	50
¼ x 4	PMMF50594	25
¼ x 4½	PMMF50595	25
¼ x 5	PMMF50596	25
¼ x 6	PMMF50597	25
⅝ x ¾	PMMF50598	50
⅝ x 1	PMMF50599	50
⅝ x 1¼	PMMF50600	50
⅝ x 1½	PMMF50601	50
⅝ x 2	PMMF50602	50
⅝ x 2½	PMMF50603	25
⅝ x 3	PMMF50604	25
⅝ x 3½	PMMF50605	25
⅝ x 4	PMMF50606	25
⅝ x 4½	PMMF50789	25
⅝ x 5	PMMF50790	25
⅝ x 6	PMMF50791	25

Stainless Steel Bolts – Carriage

*Shipped in a box quantity package as indicated in the table.

Size	Part No.	Pcs. per box
⅜ x 1	PMMF50607	50
⅜ x 1¼	PMMF50608	50
⅜ x 1½	PMMF50609	25
⅜ x 2	PMMF50610	25
⅜ x 2½	PMMF50611	25
⅜ x 3	PMMF50612	25
⅜ x 3½	PMMF50613	25
⅜ x 4	PMMF50614	25
⅜ x 4½	PMMF50792	25
⅜ x 5	PMMF50615	25
⅜ x 6	PMMF50616	25
⅜ x 8	PMMF51717	25
⅜ x 10	PMMF51718	25
½ x 1½	PMMF50617	15
½ x 2	PMMF50618	15
½ x 2½	PMMF50619	15
½ x 3	PMMF50620	10
½ x 3½	PMMF50621	10
½ x 4	PMMF50622	10
½ x 4½	PMMF50793	10
½ x 5	PMMF50623	10
½ x 6	PMMF50624	10
½ x 8	PMMF50256	10
½ x 10	PMMF51719	10

Stainless Steel Nuts – Wing Nut

*Shipped in a box quantity package as indicated in the table.

Size	Part No.	Pcs. per lb.
6-32	PMMF50699	119
8-32	PMMF50700	116
10-24	PMMF50701	104
10-32	PMMF50702	104
¼ x 20	PMMF50703	77
⅝ x 18	PMMF50704	54
⅜ x 16	PMMF50705	35
½ x 13	PMMF50706	16

Stainless Steel Nuts – Acorn Cap

*Shipped in a box quantity package as indicated in the table.

Size	Part No.	Pcs. per lb.
6-32	PMMF50707	333
8-32	PMMF50708	200
10-24	PMMF50709	185
10-32	PMMF50710	185
¼ x 20	PMMF50711	72
⅝ x 18	PMMF50712	58
⅜ x 16	PMMF50713	37
½ x 13	PMMF50714	22

Stainless Steel Sheet Metal Screws — Phillips Flat

Size	Part No.	Pcs. per box
6 x ½	PM05155	100
6 x ¾	PM05157	100
6 x 1	PM05158	100
6 x 1¼	PM05159	100
6 x 1½	PM05160	100
6 x 2	PM05161	100
8 x ½	PM05163	100
8 x ¾	PM05165	100
8 x 1	PM05166	100
8 x 1¼	PM05167	100
8 x 1½	PM05168	100
8 x 2	PM05169	100
10 x ½	PM05172	100
10 x ¾	PM05174	100
10 x 1	PM05175	100
10 x 1¼	PM05176	100
10 x 1½	PM05177	100
10 x 2	PM05178	100
10 x 2½	PM05179	100
10 x 3	PM05180	100
12 x ½	PM05181	50
12 x ¾	PM05183	50
12 x 1	PM05184	50
12 x 1¼	PM05185	50
12 x 1½	PM05186	50
12 x 2	PM05187	50
12 x 2½	PM05188	50
12 x 3	PM05189	50
14 x ½	PM05190	50
14 x ¾	PM05192	50
14 x 1	PM05193	50
14 x 1½	PM05195	50
14 x 2	PM05196	50
14 x 2½	PM05197	50
14 x 3	PM05198	50

Stainless Steel Sheet Metal Screws — Phillips Pan

Size	Part No.	Pcs. per box
6 x ½	PM05099	100
6 x ¾	PM05101	100
6 x 1	PM05102	100
6 x 1¼	PM05103	100
6 x 1½	PM05104	100
6 x 2	PM05105	100
8 x ½	PM05107	100
8 x ¾	PM05109	100
8 x 1	PM05110	100
8 x 1¼	PM05111	100
8 x 1½	PM05112	100
8 x 3	PM05113	100
10 x ½	PM05116	100
10 x ¾	PM05118	100
10 x 1	PM05119	100
10 x 1¼	PM05120	100
10 x 1½	PM05121	100
10 x 2	PM05122	100
10 x 2½	PM05123	100
10 x 3	PM05124	100
12 x ½	PM05125	50
12 x ¾	PM05127	50
12 x 1	PM05128	50
12 x 1¼	PM05129	50
12 x 1½	PM05130	50
12 x 2	PM05131	50
12 x 2½	PM05132	50
12 x 3	PM05133	50
14 x ½	PM05134	50
14 x ¾	PM05136	50
14 x 1	PM05137	50
14 x 1¼	PM05138	50
14 x 1½	PM05139	50
14 x 2	PM05140	50

Notes

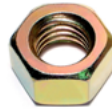
Reusing Nuts

Even when nuts, bolts, and washers are properly matched by grade, tightened to the correct torque, and properly maintained, there's a concern in reusing the nut. You will never be able to achieve the original tightness when you reuse a nut. Each time a nut is disassembled and reassembled to the bolt, clamp load (tightness) will reduce by 5 to 10 percent. After just two reassemblies with the same nut, clamp load may be down by nearly 20 percent. It's best in all applications to use a new nut than to risk failure.

Grade 8 Nuts — Hex

Color: YELLOW ZINC

*Shipped in a box quantity package as indicated in the table.

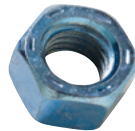


Size	Part No.	Pcs. per box	Width	ID	Height
1- $\frac{1}{8}$ -7	PM54167	5	1.897	1.01	0.097
1- $\frac{1}{4}$ -7	PM54168	4	2.102	1.105	1.056
1- $\frac{1}{2}$ -6	PM54169	3	2.514	1.326	1.461

Grade 8 Nuts — Hex Coarse Thread / Color: BLUE

High-strength alloy steel for critical application. Should be used with Grade 8 hex bolts.

*Shipped in 5-lb. packages.



Size	Part No.	Pcs. per lb.	Width AF	Height
$\frac{1}{4}$ -20	PM06142	146	$\frac{7}{16}$	$\frac{7}{32}$
$\frac{5}{16}$ -18	PM06143	98	$\frac{1}{2}$	$1\frac{7}{64}$
$\frac{3}{8}$ -16	PM06144	68	$\frac{9}{16}$	$2\frac{1}{64}$
$\frac{7}{16}$ -14	PM06145	37	$1\frac{1}{16}$	$\frac{3}{8}$
$\frac{1}{2}$ -13	PM06146	28	$\frac{3}{4}$	$\frac{7}{16}$
$\frac{5}{8}$ -11	PM06147	14	$1\frac{5}{16}$	$3\frac{5}{64}$
$\frac{3}{4}$ -10	PM06148	9	$1\frac{1}{8}$	$4\frac{1}{64}$
$\frac{7}{8}$ -9	PM06664	5	$1\frac{5}{16}$	$\frac{3}{4}$
1-8	PM06667	4	$1\frac{1}{2}$	$5\frac{5}{64}$

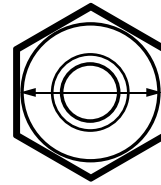
Grade 2 Nuts — Serrated Flange Coarse Thread / Color: BLUE

*Shipped in 5-lb. packages.

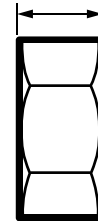


Size	Part No.	Pcs. per lb.	Width AF	Height
$\frac{1}{4}$ -20	PM06679	110	$\frac{7}{16}$	$\frac{1}{4}$
$\frac{5}{16}$ -18	PM06680	79	$\frac{1}{2}$	$\frac{1}{4}$
$\frac{3}{8}$ -16	PM06681	55	$\frac{9}{16}$	$\frac{5}{16}$
$\frac{7}{16}$ -14	PM06682	30	$\frac{5}{8}$	$\frac{7}{16}$
$\frac{1}{2}$ -13	PM06683	23	$\frac{3}{4}$	$1\frac{5}{32}$
$\frac{5}{8}$ -11	PM04698	9	$\frac{7}{8}$	$1\frac{7}{32}$
$\frac{3}{4}$ -10	PM04699	8	1	$1\frac{9}{32}$

*Width Across Flats



Height



*Width AF = width across the flats. The width across the flats determines the wrench size.

Grade 8 (Grade C) Lock Nuts — Prevailing Torque Coarse Thread / Color: BLACK

*Shipped in 5-lb. packages.



Size	Part No.	Pcs. per lb.	Width AF	Height
$\frac{1}{4}$ -20	PM06670	150	$\frac{7}{16}$	0.145
$\frac{5}{16}$ -18	PM06671	102	$\frac{1}{2}$	0.166
$\frac{3}{8}$ -16	PM06672	61	$\frac{9}{16}$	0.198
$\frac{7}{16}$ -14	PM06673	38	$1\frac{1}{16}$	0.223
$\frac{1}{2}$ -13	PM06674	29	$\frac{3}{4}$	0.262
$\frac{5}{8}$ -11	PM06675	15	$1\frac{5}{16}$	0.329
$\frac{3}{4}$ -10	PM06676	10	$1\frac{1}{8}$	0.382
$\frac{7}{8}$ -9	PM06677	6	$1\frac{5}{16}$	0.450
1-8	PM06678	4	$1\frac{1}{2}$	0.513

Grade 2 Lock Nuts — Nylon Insert Coarse Thread / Color: BLACK

*Shipped in 5-lb. packages.



Size	Part No.	Pcs. per lb.	Width AF	Height
$\frac{1}{4}$ -20	PM05660	136	$\frac{7}{16}$	$\frac{5}{16}$
$\frac{5}{16}$ -18	PM05661	90	$\frac{1}{2}$	$1\frac{1}{32}$
$\frac{3}{8}$ -16	PM05662	57	$\frac{9}{16}$	$2\frac{9}{64}$
$\frac{7}{16}$ -14	PM05663	51	$\frac{5}{8}$	$2\frac{9}{64}$
$\frac{1}{2}$ -13	PM05664	23	$\frac{3}{4}$	$1\frac{9}{32}$
$\frac{9}{16}$ -12	PM50158	8	$\frac{7}{8}$	$4\frac{1}{64}$
$\frac{5}{8}$ -11	PM50159	6	$1\frac{5}{16}$	$\frac{3}{4}$
$\frac{3}{4}$ -10	PM50160	4	$1\frac{1}{16}$	$\frac{7}{8}$
$\frac{7}{8}$ -9	PM50161	5	$1\frac{1}{4}$	$6\frac{3}{64}$
1-8	PM50162	4	$1\frac{1}{2}$	$1\frac{3}{64}$

Grade 5 Nuts – Hex Coarse Thread / Color: GREEN

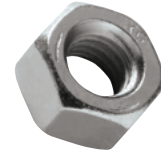
*Shipped in 10-lb. packages.



Size	Part No.	Pcs. per lb.	Width AF	Height
¼–20	PM05985	146	7/16	7/32
5/16–18	PM05986	90	½	17/64
3/8–16	PM05987	63	9/16	21/64
7/16–14	PM05988	38	1 1/16	3/8
½–13	PM05989	27	¾	7/16
9/16–12	PM05990	17	7/8	31/64
5/8–11	PM05991	14	15/16	35/64
¾–10	PM05992	9	1 1/8	41/64
7/8–9	PM05993	5	1 5/16	¾
1–8	PM05994	4	1 ½	55/64

Grade 2 Nuts – Hex Coarse Thread / Color: SILVER

*Shipped in 10-lb. packages.

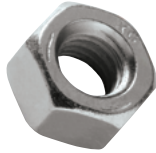


Size	Part No.	Pcs. per lb.	Width AF	Height
¼–20	PM04670	146	7/16	7/32
5/16–18	PM04671	90	½	17/64
3/8–16	PM04672	63	9/16	21/64
7/16–14	PM04673	38	1 1/16	3/8
½–13	PM04674	27	¾	7/16
9/16–12	PM08431	17	7/8	31/64
5/8–11	PM04675	14	15/16	35/64
¾–10	PM04676	9	1 1/8	41/64
7/8–9	PM08432	5	1 5/16	¾
1–8	PM08433	4	1 ½	55/64

Grade 5 Nuts – Heavy Hex Coarse Thread / Color: SILVER

These Grade 5 heavy hex nuts are used with plow bolts.

*Shipped in 10-lb. packages.



Size	Part No.	Pcs. per lb.	Width AF	Height
3/8–16	PM06707	32	1 1/16	23/64
7/16–14	PM06708	24	¾	27/64
½–13	PM06709	15	7/8	31/64
5/8–11	PM06710	8	1 1/16	39/64
¾–10	PM06711	5	1 ¼	47/64

Grade 2 Nuts – Wing Coarse Thread / Color: SILVER

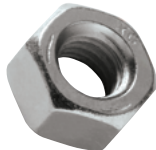
*Shipped in 5-lb. packages.



Size	Part No.	Pcs. per lb.	Wing Spread	Height
10–24	PM50192	147	29/32	15/32
¼–20	PM05665	76	13/32	9/16
5/16–18	PM05666	55	1 ¼	2 1/32
3/8–16	PM05667	34	1 7/16	25/32
7/16–14	PM05668	16	1 15/16	1
½–13	PM05669	15	1 5/16	1

Grade 2 Nuts – Heavy Hex Coarse Thread / Color: SILVER

*Shipped in 10-lb. packages.



Size	Part No.	Pcs. per lb.	Width AF	Height
¼–20	PM50122	95	½	15/64
5/16–18	PM50123	63	9/16	19/64
3/8–16	PM50124	32	1 1/16	23/64
7/16–14	PM50125	24	¾	27/64
½–13	PM50126	17	7/8	31/64
9/16–12	PM50127	13	15/16	35/64
5/8–11	PM50128	9	1 1/16	39/64
¾–10	PM50129	6	1 ¼	47/64
7/8–9	PM50130	4	1 7/16	55/64
1–8	PM50131	2	1 5/8	63/64

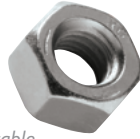
Grade 2 Nuts – Rod Coupling Coarse Thread / Color: SILVER

*Shipped in a box quantity package as indicated in the table.



Size	Part No.	Pcs. per box	Width AF	Height
¼–20	PM03491	25	7/16	1 3/4
5/16–18	PM03492	20	½	1 3/4
3/8–16	PM03493	18	9/16	1 3/4
7/16–14	PM03494	16	5/8	1 3/4
½–13	PM03495	12	1 1/16	1 3/4
5/8–11	PM03496	10	13/16	2 1/8
¾–10	PM03497	6	1	2 ¼
7/8–9	PM03498	4	1 ¼	2 ½
1–8	PM03499	3	1 ¼	2 ½

Stainless Steel Nuts – Hex



*Shipped in a box quantity package as indicated in the table.

Size	Part No.	Pcs. per box.
4–40	PM50267	100
6–32	PM05265	100
8–32	PM05266	100
10–24	PM05267	100
10–32	PM05268	100
12–24	PM05269	100
¼ x 20	PM05270	100
⅝ x 18	PM05271	100
⅜ x 16	PM05272	100
⅜ x 24	PM05273	100
½ x 13	PM05274	50
⅝ x 11	PM05275	25
¾ x 10	PM05276	20

Stainless Steel Nuts – Nylon Lock

*Shipped in a box quantity package as indicated in the table.

Size	Part No.	Pcs. per box.
4–40	PMMF50257	100
6–32	PMMF05285	100
8–32	PMMF05286	100
10–24	PMMF05287	100
10–32	PMMF05288	100
¼ x 20	PMMF05289	100
⅝ x 18	PMMF05290	100
⅜ x 16	PMMF05291	50
½ x 13	PMMF05292	25

Stainless Steel Nuts – Wing Nut

*Shipped in a box quantity package as indicated in the table.

Size	Part No.	Pcs. per box.
6–32	PMMF50699	50
8–32	PMMF50700	50
10–24	PMMF50701	50
10–32	PMMF50702	50
¼ x 20	PMMF50703	50
⅝ x 18	PMMF50704	25
⅜ x 16	PMMF50705	25
½ x 13	PMMF50706	15

Stainless Steel Nuts – Acorn Cap

*Shipped in a box quantity package as indicated in the table.

Size	Part No.	Pcs. per box.
6–32	PMMF50707	50
8–32	PMMF50708	50
10–24	PMMF50709	50
10–32	PMMF50710	50
¼ x 20	PMMF50711	50
⅝ x 18	PMMF50712	25
⅜ x 16	PMMF50713	25
½ x 13	PMMF50714	15

Nuts Metric

Metric Nylon Lock Nuts Coarse Thread / Color: BLACK

**Shipped in 5-lb. packages.*



Size	Part No.	Pcs. per lb.	Width AF	Height
M6 x 1.00	PM03904	27	10	8
M8 x 1.25	PM03905	18	13	9.5
M10 x 1.50	PM03906	11	16	11.9
M12 x 1.75	PM03907	10	18	14.9
M16 x 2.00	PM03908	5	24	19.1
M20 x 2.50	PM03909	4	30	22.8

Grade 10.9 Metric Nuts — Flange

Coarse Thread / Color: BLACK

For use with Metric Grade 10.9 flange bolts.

**Shipped in 5-lb. packages.*



Size	Part No.	Pcs. per lb.	Width AF	Height
M6 x 1.00	PM06590	126	9.85	5.88
M8 x 1.25	PM06591	64	12.8	7.82
M10 x 1.50	PM06592	38	14.8	9.78
M12 x 1.75	PM06593	22	17.85	11.85
M16 x 2.00	PM06594	9	23.75	15.7

Grade 10.9 Metric Nuts — Hex

Coarse Thread / Color: BLACK

For use with Metric Grade 10.9 hex bolts

**Shipped in 5-lb. packages.*



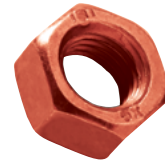
Size	Part No.	Pcs. per lb.	Width AF	Height
M6 x 1.00	PM06514	216	10	5
M8 x 1.25	PM06515	96	13	6.5
M10 x 1.50	PM06516	45	17	8
M12 x 1.75	PM06517	30	19	10
M16 x 2.00	PM06518	15	24	13
M20 x 2.50	PM06519	8	30	16

Grade 8.8 Metric Nuts — Hex

Coarse Thread / Color: RED

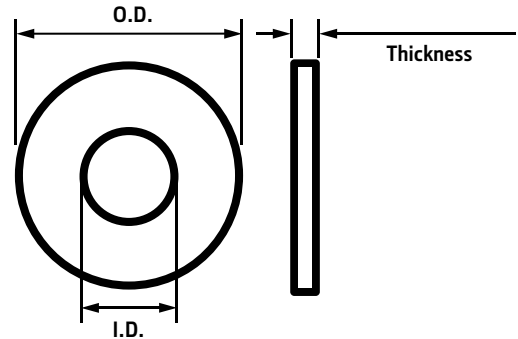
For use with Metric Grade 8.8 hex bolts.

**Shipped in 5-lb. packages.*



Size	Part No.	Pcs. per lb.	Width AF	Height
M6 x 1.00	PM06061	218	10	5
M8 x 1.25	PM06062	94	13	6.5
M10 x 1.50	PM06063	45	17	8
M12 x 1.75	PM06064	31	19	10
M16 x 2.00	PM06066	16	24	13

Washers perform numerous functions in fastener assemblies and are used mainly as a seat for bolts, nuts, and screws. Washers distribute the load over a greater area than either the bolt head or nut bearing areas. Washers also provide spring-like tension between the fastener and the workpiece to help prevent loosening or movement between parts. They can serve as a bridge to span wide clearances; they insulate, seal, and prevent damage to work surfaces.



Grade 8 Flat Washers – SAE

Color: BLUE



Hardened and tempered. For use with Grade 8 hex bolts.

*Shipped in 5-lb. packages.

Size	Part No.	Pcs. per lb.	I.D.	O.D.	Thickness
¼	PM06149	243	0.281	0.625	0.065
⅝	PM06150	215	0.344	0.688	0.065
⅜	PM06151	170	0.406	0.812	0.065
⅞	PM06152	111	0.469	0.922	0.065
½	PM06153	68	0.531	1.062	0.095
⅝	PM06154	33	0.656	1.312	0.095
¾	PM06155	26	0.812	1.469	0.134

Grade 8 Flat Washers – USS

Color: BLUE



Hardened and tempered. For use with Grade 8 hex bolts.

*Shipped in 5-lb. packages.

Size	Part No.	Pcs. per lb.	I.D.	O.D.	Thickness
¼	PM06329	134	0.312	0.734	0.065
⅝	PM06330	78	0.375	0.875	0.083
⅜	PM06331	60	0.438	1.000	0.083
⅞	PM06332	37	0.500	1.250	0.083
½	PM06333	23	0.562	1.375	0.109
⅝	PM06334	12	0.688	1.750	0.134
¾	PM06335	8	0.812	2.000	0.148
⅞	PM06665	8	0.938	2.250	0.165
1	PM06668	7	1.062	2.500	0.165

Grade 2 Flat Washers – SAE

Color: SILVER



*Shipped in 10-lb. packages.

Size	Part No.	Pcs. per lb.	I.D.	O.D.	Thickness
¼	PM50145	220	0.281	0.625	0.065
⅝	PM50146	192	0.344	0.688	0.065
⅜	PM50147	139	0.406	0.812	0.065
⅞	PM50148	97	0.469	0.922	0.065
½	PM50149	55	0.531	1.062	0.095
⅝	PM50150	43	0.594	1.156	0.095
⅜	PM50151	36	0.656	1.312	0.095
¾	PM50152	27	0.812	1.469	0.134
⅞	PM50153	16	0.938	1.750	0.134
1	PM50154	12	1.062	2.000	0.134

Grade 2 Flat Washers – Heavy SAE

Color: SILVER



Designed to be used with plow bolts. Can also be used for other applications.

*Shipped in 10-lb. packages.

Size	Part No.	Pcs. per lb.	I.D.	O.D.	Thickness
⅜	PM06712	67	0.406	0.812	0.08
⅞	PM06713	51	0.469	0.922	0.08
½	PM06714	22	0.531	1.062	0.12
⅝	PM06715	13	0.656	1.312	0.15
¾	PM06716	10	0.812	1.469	0.15

Grade 2 Flat Washers – USS

Color: SILVER



*Shipped in 10-lb. packages.

Size	Part No.	Pcs. per lb.	I.D.	O.D.	Thickness
#10	PM50193	357	0.250	0.562	0.049
¼	PM04560	134	0.312	0.734	0.065
⅝	PM04561	78	0.375	0.875	0.083
⅜	PM04562	60	0.438	1.000	0.083
7/16	PM04563	37	0.500	1.250	0.083
½	PM04564	23	0.562	1.375	0.109
9/16	PM08426	20	0.625	1.469	0.109
5/8	PM04565	12	0.688	1.750	0.134
¾	PM04566	8	0.812	2.000	0.148
7/8	PM08427	6	0.938	2.250	0.165
1	PM08428	5	1.062	2.500	0.165
1 1/8	PM08429	4	1.250	2.750	0.165
1 ¼	PM08430	3	1.375	3.000	0.165
1 5/8	PM04011	3	1.500	3.250	0.165
1 ½	PM04012	2	1.625	3.500	0.165
1 ¾	PM04013	2	1.875	4.000	0.165
2	PM040140	2	2.125	4.500	0.165

Fender Washers

Color: SILVER



*Shipped in 5-lb. packages.

Size	Part No.	Pcs. per lb.	I.D.	O.D.	Thickness
3/16 x 1	PM50184	76	0.219	1.000	0.049
¼ x 1	PM50185	77	0.281	1.000	0.049
¼ x 1¼	PM50186	50	0.281	1.250	0.049
¼ x 1½	PM50187	34	0.281	1.500	0.049
5/16 x 1¼	PM50188	53	0.344	1.250	0.049
5/16 x 1½	PM50189	33	0.344	1.500	0.049
3/8 x 1½	PM50190	35	0.406	1.500	0.049
½ x 2	PM50191	19	0.531	2.000	0.060

Stainless Steel Washers – Flat

*Shipped in a box quantity package as indicated in the table.

Size	Part No.	Pcs. per box
#6	PM05320	100
#8	PM05321	100
#10	PM05322	100
¼	PM05323	100
⅝	PM05324	100
⅜	PM05325	100
½	PM50715	50
5/8	PM50716	25
¾	PM50717	20

Grade 8 Lock Washers – Split

Color: BLUE



Hardened. For use with Grade 8 hex bolts.

*Shipped in 5-lb. packages.

Size	Part No.	Pcs. per lb.	I.D.	O.D.	Thickness
¼	PM06156	472	0.262	0.489	0.020
⅝	PM06157	248	0.326	0.586	0.078
⅜	PM06158	161	0.390	0.683	0.094
7/16	PM06159	113	0.455	0.779	0.109
½	PM06160	77	0.518	0.873	0.125
5/8	PM06161	45	0.650	1.079	0.156
¾	PM06162	27	0.775	1.271	0.188
7/8	PM06666	18	0.905	1.454	0.219
1	PM06669	12	1.042	1.661	0.250

Size	Part No.	Pcs. per box	I.D.	O.D.	Thickness
1 1/8	PM54170	5	1.742	1.181	0.206
1 ½	PM54172	5	2.582	1.697	0.595

Lock Washers – Split

Color: SILVER



Medium alloy steel.

*Shipped in 10-lb. packages.

Size	Part No.	Pcs. per lb.	I.D.	O.D.	Thickness
¼	PM04570	415	0.262	0.489	0.062
⅝	PM04571	245	0.326	0.586	0.078
⅜	PM04572	151	0.390	0.683	0.094
7/16	PM04573	96	0.455	0.779	0.109
½	PM04574	91	0.518	0.873	0.125
9/16	PM50155	58	0.582	0.971	0.141
5/8	PM04575	42	0.650	1.079	0.156
¾	PM04576	25	0.775	1.271	0.188
7/8	PM50156	18	0.905	1.464	0.219
1	PM501570	12	1.042	1.661	0.250

Grade 8 Thick Flat Washers –

Color: YELLOW ZINC



*Shipped in 5-lb. packages.

Size	Part No.	Pcs. per lb.	I.D.	O.D.	Thickness
¼	PM55376	140	0.73	0.319	0.083
⅝	PM55377	90	0.878	0.385	0.091
⅜	PM55378	72	0.995	0.454	0.09
7/16	PM55379	40	1.25	0.51	0.095
½	PM55380	24	1.377	0.56	0.14
9/16	PM55381	20	1.475	0.628	0.142
5/8	PM55382	12	1.744	0.718	0.158
¾	PM55383	10	2.2	1.035	0.359

Stainless Steel Washers – Split Lock



*Shipped in a box quantity package as indicated in the table.

Size	Part No.	Pcs. per box
#6	PM05335	100
#8	PM05336	100
#10	PM05337	100
¼	PM05338	100
5/16	PM05339	100
3/8	PM05340	100
½	PM50718	50
5/8	PM50719	25

Stainless Steel Washers – Fender



*Shipped in a box quantity package as indicated in the table.

Size	Part No.	Pcs. per box
5/32 x 7/8	PMMF07575	100
3/16 x 1	PMMF07576	100
3/16 x 1¼	PMMF07577	100
¼ x 1	PMMF07578	100
¼ x 1¼	PMMF07579	100
¼ x 1½	PMMF07580	100
5/16 x 1½	PMMF07581	100
3/8 x 1½	PMMF07582	50
½ x 2	PMMF07583	50

Stainless Steel Washers – Finish

*Shipped in a box quantity package as indicated in the table.

Size	Part No.	Pcs. per box
#6	PMMF05345	100
#8	PMMF05346	100
#10	PMMF05347	100
#12	PMMF05348	100
#14	PMMF05349	100

Washers Metric

Grade 10.9 Metric Flat Washers – Standard

Color: BLACK



Hardened alloy steel. To be used with Grade 10.9 metric hex bolts.

**Shipped in 5-lb. packages.*

Size	Part No.	Pcs. per lb.	I.D.	O.D.	Thickness
6mm	PM06526	531	6.4	12	1.6
8mm	PM06527	270	8.4	16	1.6
10mm	PM06528	151	10.5	20	2
12mm	PM06529	81	13	24	2.5
16mm	PM06530	40	17	30	3
20mm	PM06531	30	21	37	3

Metric Lock Washers – Split

Color: BLACK



To be used with Grade 10.9 metric hex bolts.

**Shipped in 5-lb. packages.*

Size	Part No.	Pcs. per lb.	I.D.	O.D.	Thickness
6mm	PM06520	539	6.1	11.8	1.6
8mm	PM06521	273	8.1	14.8	2
10mm	PM06522	171	10.2	18.1	2.2
12mm	PM06523	115	12.2	21.1	2.5
16mm	PM06524	52	18.2	27.4	3.5
20mm	PM06525	31	20.2	33.5	4

Metric Flat Washers – Standard

Color: RED



To be used with Grade 8.8 metric hex bolts.

**Shipped in 5-lb. packages.*

Size	Part No.	Pcs. per lb.	I.D.	O.D.	Thickness
6mm	PM06073	488	6.4	12	1.6
8mm	PM06074	247	8.4	16	1.6
10mm	PM06075	204	10.5	20	2
12mm	PM06076	118	13	24	2.5
16mm	PM06078	52	17	30	3

Metric Lock Washers – Split

Color: RED



To be used with Grade 8.8 metric hex bolts.

**Shipped in 5-lb. packages.*

Size	Part No.	Pcs. per lb.	I.D.	O.D.	Thickness
6mm	PM06067	536	6.1	11.8	1.6
8mm	PM06068	285	8.1	14.8	2
10mm	PM06069	136	10.2	18.1	2.2
12mm	PM06070	82	12.2	21.1	2.5
16mm	PM06072	45	18.2	27.4	3.5

Plow Bolts and Kits Grades 5 and 8

Grade 8 Plow Bolts Coarse Thread / Color: YELLOW ZINC



*Shipped in 10-lb. packages.

Size	Part No.	Pcs. per lb.
#3 Regular Head – Square Neck		
7/16-14 x 1.34	PM06698	17
#3 Repair Head		
7/16-14 x 1 1/2	PM06699	16
7/16-14 x 1 3/4	PM06700	14
7/16-14 x 2	PM06701	12
1/2-13 x 2 1/4	PM06702	8
1/2-13 x 2 1/2	PM06730	8
1/2-13 x 2 3/4	PM06703	7
1/2-13 x 3	PM06704	5
#3 Regular Head		
5/8-11 x 2 1/4	PM06705	3
Domed Head Cutting Edge		
3/4-10 x 2 1/2	PM06706	8
Plow Bolt Kit (with hex nut)		
1/2 x 2 1/4	PM01956	6
5/8 x 1 1/2	PM01957	12
1/2 x 2 1/2	PM01958	5
1/2 x 2 3/4	PM01973	5

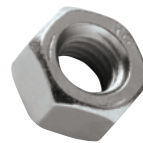
Grade 5 Plow Bolts – #3 Repair Head Coarse Thread / Color: SILVER



*Shipped in 10-lb. packages.

Size	Part No.	Pcs. per lb.
1/2 x 1 3/4	PM01947	10
1/2 x 2	PM01948	9
1/2 x 2 1/4	PM01949	8
1/2 x 2 1/2	PM01950	7
1/2 x 2 3/4	PM01951	7
1/2 x 3	PM01952	6
1/2 x 3 1/2	PM01953	5
3/8-16 x 1	PM06687	29
3/8-16 x 1 1/4	PM06688	25
3/8-16 x 1 1/2	PM06689	23
7/16-14 x 1 1/4	PM06690	18
7/16-14 x 1 1/2	PM06691	16
7/16-14 x 1 3/4	PM06692	14
7/16-14 x 2	PM06693	12
7/16-14 x 2 1/2	PM06694	10
7/16-14 x 3	PM06695	8
1/2-13 x 1 1/2	PM06696	12
5/8-11 x 2	PM06697	6
Plow Bolt Kit (with hex nut and washer)		
7/16 x 1 1/2	PM01955	8
Plow Bolt Kit (with flanged nut)		
1/2 x 2 1/2	PM01959	6

Grade 5 Nuts – Heavy Hex Coarse Thread / Color: SILVER



Designed to be used with plow bolts.
Can also be used for other applications.

*Shipped in 10-lb. packages.

Size	Part No.	Pcs. per lb.	Width AF	Height
3/8-16	PM06707	32	1 1/16	23/64
7/16-14	PM06708	24	3/4	27/64
1/2-13	PM06709	15	7/8	31/64
5/8-11	PM06710	8	1 1/16	39/64
3/4-10	PM06711	5	1 1/4	47/64

Grade 2 Flat Washers – Heavy SAE Color: SILVER



Designed to be used with plow bolts.
Can also be used for other applications.

*Shipped in 10-lb. packages.

Size	Part No.	Pcs. per lb.	I.D.	O.D.	Thickness
3/8	PM06712	67	0.406	0.812	0.08
7/16	PM06713	51	0.469	0.922	0.08
1/2	PM06714	22	0.531	1.062	0.12
5/8	PM06715	13	0.656	1.312	0.15
3/4	PM06716	10	0.812	1.469	0.15

Grade 5 #3 Repair Head Coarse Thread Plow Bolt Assortment

Part No. PM15787 (Hardware Only)



*Shipped in 10-lb. packages.

Size	Part No.	Pcs. per lb.
Grade 5 Plow Bolts – Coarse		
1/2 x 1 3/4	PM01947	10
1/2 x 2	PM01948	9
1/2 x 2 1/4	PM01949	8
1/2 x 2 1/2	PM01950	7
1/2 x 2 3/4	PM01951	7
1/2 x 3	PM01952	6
1/2 x 3 1/2	PM01953	5
3/8-16 x 1	PM06687	29
3/8-16 x 1 1/4	PM06688	25
3/8-16 x 1 1/2	PM06689	23
7/16-14 x 1 1/4	PM06690	18
7/16-14 x 1 1/2	PM06691	16
7/16-14 x 1 3/4	PM06692	14
7/16-14 x 2	PM06693	12
7/16-14 x 2 1/2	PM06694	10
7/16-14 x 3	PM06695	8
1/2-13 x 1 1/2	PM06696	12
5/8-11 x 2	PM06697	6
Grade 5 Heavy Hex Nuts – Coarse		
3/8-16	PM06707	32
7/16-14	PM06708	24
1/2-13	PM06709	15
5/8-11	PM06710	8
3/4-10	PM06711	5
Grade 2 SAE Heavy Flat Washers		
3/8	PM06712	67
7/16	PM06713	51
1/2	PM06714	22
5/8	PM06715	13
3/4	PM06716	10

Grade 8 Coarse Thread Plow Bolt Assortment

Part No. PM15784

(Hardware only)



*Shipped in 10-lb. packages.

Size	Part No.	Pcs. per lb.
Grade 8 Plow Bolts – Coarse – #3 Regular Head – Square Neck		
7/16-14 x 1.34	PM06698	17
Grade 8 Plow Bolts – Coarse – #3 Repair Head		
7/16-14 x 1 1/2	PM06699	16
7/16-14 x 1 3/4	PM06700	14
7/16-14 x 2	PM06701	12
1/2-13 x 2 1/4	PM06702	8
1/2-13 x 2 1/2	PM06730	8
1/2-13 x 2 3/4	PM06703	7
1/2-13 x 3	PM06704	6
Grade 8 Plow Bolts – Coarse – #3 Regular Head		
5/8-11 x 2 1/4	PM06705	5
Grade 8 Plow Bolts – Coarse – Domed Head Cutting Edge		
3/4-10 x 2 1/2	PM06706	3
Grade 5 Heavy Hex Nuts – Coarse		
3/8-16	PM06707	32
7/16-14	PM06708	24
1/2-13	PM06709	15
5/8-11	PM06710	8
3/4-10	PM06711	5
Grade 2 SAE Heavy Flat Washers		
3/8	PM06712	67
7/16	PM06713	51
1/2	PM06714	22
5/8	PM06715	13
3/4	PM06716	10
Plow Bolt Kit (with hex nut)		
1/2 x 2 1/4	PM01956	6
3/8 x 1 1/2	PM01957	12
1/2 x 2 1/2	PM01958	5
1/2 x 2 3/4	PM01973	5

Grade 5 and Grade 8 Coarse Thread Plow Bolt Assortment



Part No. PM15783 (Hardware Only)

*Shipped in 10-lb. packages.

Size	Part No.	Pcs. per lb.
Grade 5 Plow Bolts – Coarse – #3 Repair Head		
3/8-16 x 1	PM06687	29
3/8-16 x 1¼	PM06688	25
3/8-16 x 1½	PM06689	23
7/16-14 x 1¼	PM06690	18
7/16-14 x 1½	PM06691	16
7/16-14 x 1¾	PM06692	14
7/16-14 x 2	PM06693	12
7/16-14 x 2½	PM06694	10
7/16-14 x 3	PM06695	8
½-13 x 1½	PM06696	12
5/8-11 x 2	PM06697	6
Grade 8 Plow Bolts – Coarse – #3 Regular Head – Square Neck		
7/16-14 x 1.34	PM06698	17
Grade 8 Plow Bolts – Coarse – #3 Repair Head		
7/16-14 x 1½	PM06699	16
7/16-14 x 1¾	PM06700	14
7/16-14 x 2	PM06701	12
½-13 x 2¼	PM06702	8
½-13 x 2½	PM06730	8
½-13 x 2¾	PM06703	7
½-13 x 3	PM06704	6
Grade 8 Plow Bolts – Coarse – #3 Regular Head		
5/8-11 x 2¼	PM06705	5
Grade 8 Plow Bolts – Coarse – Domed Head Cutting Edge		
¾-10 x 2½	PM06706	3
Grade 5 Heavy Hex Nuts – Coarse		
3/8-16	PM06707	32
7/16-14	PM06708	24
½-13	PM06709	15
5/8-11	PM06710	8
¾-10	PM06711	5
Grade 2 SAE Heavy Flat Washers		
3/8	PM06712	67
7/16	PM06713	51
½	PM06714	22
5/8	PM06715	13
¾	PM06716	10

Grade 5 Threaded Rod

Coarse Thread / Color: YELLOW



*Shipped in a box quantity package as indicated in the table.

Size	Part No.	Pcs. per box
1/4"-20 x 36	PM29001	5
3/8"-18 x 36	PM29002	5
1/2"-16 x 36	PM29003	5
5/8"-14 x 36	PM29004	5
3/4"-13 x 36	PM29005	5
7/8"-11 x 36	PM29006	1
1"-10 x 36	PM29007	1
1 1/8"-9 x 36	PM29008	1
1 1/4"-8 x 36	PM29009	1

Grade 2 Threaded Rod

Coarse Thread / Color: SILVER



*Shipped in a box quantity package as indicated in the table.

Size	Part No.	Pcs. per box
1/4"-20 x 36	PM29030	5
3/8"-18 x 36	PM29031	5
1/2"-16 x 36	PM29032	5
5/8"-14 x 36	PM29033	5
3/4"-13 x 36	PM29034	5
7/8"-11 x 36	PM29035	1
1"-10 x 36	PM29036	1
1 1/8"-9 x 36	PM29037	1
1 1/4"-8 x 36	PM29038	1

Grade 2 Nuts — Rod Coupling

Coarse Thread / Color: SILVER



*Shipped in a box quantity package as indicated in the table.

Size	Part No.	Pcs. per box	Width AF	Height
1/4"-20	PM29119	25	3/8"	1 1/4"
3/8"-18	PM29120	20	1/2"	1 1/4"
1/2"-16	PM29121	18	5/8"	1 1/4"
5/8"-14	PM29122	16	3/4"	1 1/4"
3/4"-13	PM29123	12	7/8"	1 1/4"
7/8"-11	PM29125	10	1"	2 1/4"
1"-10	PM29126	6	1 1/8"	2 1/4"
1 1/8"-9	PM29127	4	1 1/4"	2 1/4"
1 1/4"-8	PM29128	3	1 3/4"	2 1/4"

Metric Threaded Rod

Coarse Thread / Color: SILVER

*Shipped in a box quantity package as indicated in the table.

Size	Part No.	Pcs. per box
5mm-.8 x 1M	PMMF29094	5
6mm-1.0 x 1M	PMMF29095	5
8mm-1.0 x 1M	PMMF29096	5
8mm-1.25 x 1M	PMMF29097	5
10mm-1.0 x 1M	PMMF29098	5
10mm-1.25 x 1M	PMMF29099	5
10mm-1.5 x 1M	PMMF29100	5
12mm-1.25 x 1M	PMMF29101	5
12mm-1.5 x 1M	PMMF29102	5
12mm-1.75 x 1M	PMMF29103	5
14mm-2.0 x 1M	PMMF29104	5
16mm-2.0 x 1M	PMMF29105	5

THREADED ROD ENGLISH AND METRIC DISPLAYS

English Threaded Rod Assortment Part No. PM15786

Metric Threaded Rod Assortment Part No. PMMF17750



Threaded Rod Assortment Part No. PM15786 includes all parts listed below.

Size	Part No.	Pcs. per box
Grade 5 Threaded Rod		
1/4"-20 x 36	PM29001	5
3/8"-18 x 36	PM29002	5
1/2"-16 x 36	PM29003	5
5/8"-14 x 36	PM29004	5
3/4"-13 x 36	PM29005	5
7/8"-11 x 36	PM29006	1
1"-10 x 36	PM29007	1
1 1/8"-9 x 36	PM29008	1
1 1/4"-8 x 36	PM29009	1
Grade 2 Threaded Rod		
1/4"-20 x 36	PM29030	5
3/8"-18 x 36	PM29031	5
1/2"-16 x 36	PM29032	5
5/8"-14 x 36	PM29033	5
3/4"-13 x 36	PM29034	5
7/8"-11 x 36	PM29035	1
1"-10 x 36	PM29036	1
1 1/8"-9 x 36	PM29037	1
1 1/4"-8 x 36	PM29038	1
Grade 2 Rod Coupling Nuts		
1/4"-20	PM29119	25
3/8"-18	PM29120	20
1/2"-16	PM29121	18
5/8"-14	PM29122	16
3/4"-13	PM29123	12
7/8"-11	PM29125	10
1"-10	PM29126	6
1 1/8"-9	PM29127	4
1 1/4"-8	PM29128	3
English Threaded Rod Display Rack		
Rack only	PM15781	1



PM15786

Metric Threaded Rod Assortment Part No. PMMF17750 includes all parts listed below.

Metric Threaded Rod Coarse Thread / Color: SILVER

Size	Part No.	Pcs. per box
5mm-.8 x 1M	PMMF29094	5
6mm-1.0 x 1M	PMMF29095	5
8mm-1.0 x 1M	PMMF29096	5
8mm-1.25 x 1M	PMMF29097	5
10mm-1.0 x 1M	PMMF29098	5
10mm-1.25 x 1M	PMMF29099	5
10mm-1.5 x 1M	PMMF29100	5
12mm-1.25 x 1M	PMMF29101	5
12mm-1.5 x 1M	PMMF29102	5
12mm-1.75 x 1M	PMMF29103	5
14mm-2.0 x 1M	PMMF29104	5
16mm-2.0 x 1M	PMMF29105	5

Metric Threaded Rod Display Rack
Rack Only PMMF17765

Large Tray Assortments for On-Site Storage

Large Tray Cabinet Base

Part No.: PM15466

Dimension: 20 $\frac{1}{2}$ -in. (W) x
12 $\frac{1}{2}$ -in. (D) x 15-in. (H)



Large tray storage system for specialty hardware:

- Convenient on-site storage option for customers.
- Large tray cabinet features pullout drawers to hold four tray assortments.
- Cabinet may be used alone or with the metal base.

Large tray assortments:

- 28 preselected specialty hardware assortments.
- Each assortment includes a variety of specialty hardware and a metal tray.
- Empty trays are available for other hardware storage needs.
- Large tray cabinets and bases must be ordered separately.

Large Tray Cabinet

Part No.: PM15465

Dimension: 20 $\frac{1}{2}$ -in. (W) x
12 $\frac{1}{2}$ -in. (D) x 14 $\frac{1}{2}$ -in. (H)



**To view individual components see appropriate catalog section.*



20-Compartment Tray

Part No.: PM15469
Dimension: 18-in. (W)
x 12-in. (D) x 3-in. (H)



6-Compartment Tray

Part No.: PM15467
Dimension: 18-in. (W)
x 12-in. (D) x 3-in. (H)



24-Compartment Tray

Part No.: PM15470
Dimension: 18-in. (W)
x 12-in. (D) x 3-in. (H)



Hardware Tray

Part No.: PM15468
Dimension: 18-in. (W)
x 12-in. (D) x 3-in. (H)

Description	Part No.
Assortments	
Battery hold-down bolts	PM15529
Bolts, Grade 5, coarse thread	PM15510
Bolts, Grade 5, fine thread	PM15511
Bolts, Grade 8, coarse thread	PM15512
Bolts, Grade 8.8 metric, coarse thread	PM15513
Bolts, Grade 8.8 metric, fine thread	PM15514
Bolts, socket-head, coarse thread	PM15522
Bolts, socket-head, fine thread	PM15523
Bolts, stainless steel, coarse thread	PM15515
Clevis pins	PM15537
Cotter pins	PM15519
Fender washers	PM15530
Grease fittings	PM15535
Lock Nuts, nylon insert	PM15539
Lock Nuts, prevailing torque	PM15532
Screws, machine, round head	PM15521
Screws, machine, round-head combination	PM15531
Screws, self-drilling, hex head	PM15533
Screws, sheet metal combination, pan head	PM15527
Screws, sheet metal, hex washer	PM15517
Screws, sheet metal, pan-head Phillips	PM15528
Screws, sheet metal, stainless steel	PM15516
Screws, thread cutting, hex washer	PM15518
Set screws, socket head	PM15529
Snap rings	PM15536
Spring pins	PM15520
Empty trays	
6-compartment tray	PM15467
20-compartment tray	PM15469
24-compartment tray	PM15470
Hardware tray with 24 adjustable dividers	PM15468

For contents of assortments, see section 11 in catalog.

Value Kit Assortments

- Assortments feature the most popular hardware styles and sizes — hang on an end cap or above a wall display.
- Durable, polypropylene boxes provide clean storage and easy access.
- Ideal for field service work and repair and maintenance shops.
- Assortments are a great gift idea.
- 7-in. (W) x 10¼-in. (H) x 1¼-in. (D)

Part No.: PM17978
Heavy-duty display hook

Part No.: PM17977
Value kit/Pack display rack



Part No.: PM11918
Metric hex screw caps



Part No.: PM11919
Stainless steel fasteners



Part No.: PM11921
Drill screws



Part No.: PM11922
Sheet metal screws



Part No.: PM11923
Set screws



Part No.: PM11925
Woodruff keys



Part No.: PM11927
Value kit empty box



Part No.: PM11926
Tension pins



Part No.: PM11920
Machine screws



Part No.: PM12002
Flat & lock washers



Part No.: PM12003
Prevailing torque lock nuts



Grade 5 Coarse Thread Hex Bolt Assortment
Part No. PM11917



Description	Pkg. Qty. / Pcs.
Hex Bolts — Coarse Thread	
¼–20 x ½	12
¼–20 x ¾	10
¼–20 x 1	8
¼–20 x 1½	6
⅝–18 x ½	10
⅝–18 x ¾	10
⅝–18 x 1	8
⅝–18 x 1½	6
¾–16 x ¾	5
¾–16 x 1	5
¾–16 x 1½	4
¾–16 x 2	3
Hex Nuts — Coarse Thread	
¼–20	36
⅝–18	34
¾–16	17
Flat Washers	
¼	36
⅝	34
¾	17
Lock Washers	
¼	36
⅝	34
¾	17

Grade 8.8 Metric Coarse Thread Hex Bolt Assortment
Part No. PM11918

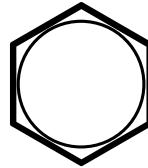


Description	Pkg. Qty. / Pcs.
Hex Bolts — Coarse Thread	
M6–1.00 x 12	8
M6–1.00 x 16	8
M6–1.00 x 20	6
M6–1.00 x 25	4
M8–1.25 x 20	5
M8–1.25 x 25	4
M8–1.25 x 30	4
M8–1.25 x 35	4
M10–1.50 x 20	4
M10–1.50 x 25	4
M10–1.50 x 30	3
M10–1.50 x 35	2
Hex Nuts — Coarse Thread	
M6 x 1.00	26
M8 x 1.25	17
M10 x 1.50	13
Flat Washers	
6mm	26
8mm	17
10mm	13
Lock Washers	
6mm	26
8mm	17
10mm	13

The guide to identifying fasteners by grade markings:

Grade 2 and non-hardened — (no marks)

Use for wood and general hardware applications.



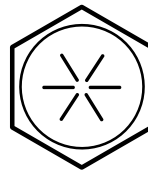
Grade 5 — (3 radial lines)

Use for agricultural, small-engine repair, and automotive applications where moderate tensile strength is required.



Grade 8 — (6 radial lines)

For agricultural, automotive, and other applications where high tensile strength is required.



Grade markings help you choose the right fasteners.

Head markings on bolts are your assurance that the fasteners will do the job they are designed to do.

The Society of Automotive Engineers and the Industrial Fasteners Institute have established specific ranges of hardness and tensile strength for each grade of fasteners, and all products meet or exceed these requirements.

Grade 2 and non-hardened fasteners, often referred to as “hardware” quality, are typically made of low-carbon steel. They are ideally suited for holding wood pieces together (in combination with appropriate nuts and washers) or general hardware use, where the greater strength is not required.

Grade 5 fasteners are made of medium carbon steel, then quenched and tempered for the additional strength necessary for most automotive uses and other applications where strength is a moderate concern. The grade marking is three equally spaced lines coming out from the center of the head. Manufacturers’ identifications are added for traceability.

Grade 8 fasteners are manufactured for the most demanding applications from medium carbon-alloy steel, then quenched and tempered to superior strength and hardness qualities. The grade marking is six equally spaced lines coming out of the center of the head. Once again, the manufacturer’s mark is necessary for traceability.

Do not confuse the use of Grade 8.2 boron bolts with true Grade 8. The two grades have different characteristics and should not be used interchangeably.

When sources cannot document the materials and processes used in manufacturing fasteners, the potential for problems increases. That’s why all products are subjected to rigorous inspections and verification procedures.

You can rest assured that all products have been verified as meeting or exceeding appropriate standards for grade and application. You’ll get the quality you demand for your customers.

Differences Between Fastener Grades

SAE Grade	Diameter	Proof Load	Min. Tensile Strength	Hardness		Material and Heat Treatment
				Brinell	Rockwell	
Grade 2	¼–½ in.	55,000 psi	74,000 psi	149–241	B80–B100	Low or medium carbon steel
	¾–1½ in.	33,000 psi	60,000 psi	121–241	B70–B100	
Grade 5	¼–1 in.	85,000 psi	120,000 psi	255–321	C25–C34	Medium carbon steel, quenched and tempered
	1–1½ in.	74,000 psi	105,000 psi	223–285	C19–C30	
Grade 8	¼–1½ in.	120,000 psi	150,000 psi	302–352	C32–C38	Medium carbon-alloy steel, quenched and tempered*

*SAE 1541 steel, oil quenched and tempered, may be used for products 7/16-in. diameter and smaller.

Fastener Head Markings and Grades

Inch Fasteners								
Grade Marking	Specification	Material	Nominal Size	Proof Load	Tensile Strength	Core Hardness		Max. Surface Hardness
						Min.	Max.	
	ANSI – Grade 307A	Low carbon steel	¼–1 in.	–	60,000	B69	B100	–
	SAE – Grade 1	Low carbon steel	¼–1½ in.	33,000 psi	60,000 psi	B100	B100	–
	Grade 2	Low carbon steel	¼–¾; over ¾–1½ in.	55,000 psi 33,000 psi	74,000 psi 60,000 psi	B80 B70	B100 B100	– –
	SAE – Grade 5	Medium carbon steel, quenched and tempered	¼–1; over 1–1½ in.	85,000 psi 74,000 psi	120,000 psi 105,000 psi	C25 C19	C34 C30	30N54 30N50
	SAE – Grade 8	Medium carbon-alloy steel, quenched and tempered	¼–1½ in.	120,000 psi	150,000 psi	C33	C39	30N88.6
	SAE – Grade 8.2	Medium carbon boron martensite steel, fully kilned, fine grain, quenched and tempered	¼–1 in.	120,000 psi	150,000 psi	C33	C39	30N88.6
Nuts								
	SAE – Grade 2	Low carbon steel	¼–1½ in.	90,000 psi		Hardness RC 32 max.		
	SAE – Grade 5	Medium carbon steel	¼–1; over 1–1½ in.	120,000 psi 105,000 psi		RC 32 max. RC 32 max.		
	SAE – Grade 8	Medium carbon steel, quenched and tempered	¼–5/8; over 5/8–1; 1–1½ in.	150,000 psi		RC 24–32 RC 26–34 RC 26–36		
Metric Fasteners								
	Property Grade 8.8	Medium carbon steel, quenched and tempered	M17–M36	87,000 psi (600)	120,350 psi (830)	C23	C34	*
	Property Grade 9.8	Medium carbon steel, quenched and tempered	M1.6–M16	94,250 psi (650)	130,500 psi (830)	C27	C36	*
	Property Grade 10.9	Medium carbon-alloy steel, quenched and tempered	M6–M36	120,350 psi (830)	150,800 psi (1040)	C33	C39	*
	Property Grade 12.9	Medium carbon-alloy steel, quenched and tempered	M1.6–M36	140,650 psi (970)	176,900 psi (1220)	C39	C44	*

*Surface hardness must not exceed core hardness by more than two (2) points (RC equivalent); 10.9 shall also not exceed 30N59.

Application Guidelines

Quality requirements

The quality of the fastener selected to replace an OEM fastener is a vital decision; failure to replace a graded fastener with the **same** grade or **better** risks mechanical failure.

Understanding grade markings

Four nationally recognized engineering organizations have defined fastener specifications: the Society of Automotive Engineers (SAE); the American Society for Testing and Materials (ASTM); the International Organization for Standardization (ISO), which sets metric specifications; and the Industrial Fastener Institute (IFI). These organizations have established methods for identifying different grades of fasteners according to their minimum strength requirements, steel composition, and, in some cases, heat-treatment requirements.

While there are numerous grades of fasteners that currently exist, the greatest usage is encompassed in fastener Grades 2, 5, and 8, and metric Property Grades 8.8, 10.9, and 12.9.

The head markings for grades are shown in the chart on page 13.2. Grades 5 and 8 and Property Grades 8.8 and 10.9 require the manufacturer's identifying mark (registered with IFI) to be clearly marked on the fastener. In the case of a liability claim, the manufacturer's ID is essential to providing traceability; therefore, graded fasteners must have complete and proper head markings.

Grade 5

These are medium carbon-steel fasteners that have been heat-treated, quenched, and then tempered to achieve a level of tensile strength and hardness meeting the requirements for a wide

range of agricultural, automotive, and mechanical assemblies. Identified by three radial lines and **the manufacturer's head marking**, Grade 5 fasteners are specified by agricultural, automotive, and equipment manufacturers for general applications requiring moderate strength. Traceability is required for Grade 5 fasteners.

Grade 8

Grade 8 fasteners, which meet the highest SAE specification for fasteners, are required for critical fastening applications such as engines, drivetrains, brush movers, grain carts, hydraulic systems, hay/corn choppers, skid loaders, backhoes, and front-end loaders. They are identified by six equally spaced radial lines, and the **manufacturer's head marking** is required for traceability.

Property Grade 8.8 metric

Comparable to SAE Grade 5, these bolts are manufactured from medium carbon steel, then heat-treated, quenched, and tempered. The numbers **8.8** on the head, along with a manufacturer's logo or head mark, identifies them. Property Grade 8.8 fasteners are specified by both foreign and domestic automotive and equipment manufacturers for use in a wide range of applications requiring moderate strength. Traceability is required for this grade of fasteners.

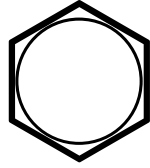
Property Grade 10.9 metric

Comparable to SAE Grade 8, these bolts are manufactured from medium carbon steel, then heat-treated, quenched, and tempered. The numbers **10.9** on the head, along with a manufacturer's logo or head mark, identifies them. They are specified in critical agricultural, automotive, and heavy-duty applications with high-load potentials. Traceability is required for this grade of fasteners.

Metric Torque Specifications

Standard Thread Pitch						
Fastener Diameter	Property Grade 8.8 120,350-psi Tensile Strength		Property Grade 10.9 150,800-psi Tensile Strength		Property Grade 12.9 176,900-psi Tensile Strength	
	Torque Nm		Torque Nm		Torque Nm	
	Unplated	Plated	Unplated	Plated	Unplated	Plated
M6	10.5	9.9	15	14	18	16.5
M7	17.5	16.5	25	23	29	27
M8	26	24	36	34	43	40
M10	51	48	72	67	87	81
M12	89	83	125	117	150	140
M14	141	132	198	185	240	220
M16	215	200	305	285	365	340
M18	295	275	420	390	500	470
M20	420	390	590	550	710	660
M24	725	675	1,020	950	1,220	1,140
Fine Thread Pitch						
Fastener Diameter	Property Grade 8.8		Property Grade 10.9		Property Grade 12.9	
	Torque Nm		Torque Nm		Torque Nm	
	Unplated	Plated	Unplated	Plated	Unplated	Plated
M8	27	25	38	35	45	42
M10	52	49	73	68	88	82
M12	95	88	135	125	160	150
M14	150	140	210	192	250	235
M16	225	210	315	295	380	350
M18	325	305	460	425	550	510
M20	460	425	640	600	770	720
M24	780	720	1,100	1,000	1,300	1,200

Note: The torque values above are for metric-calibrated torque wrenches that measure Nm (Newton meters). To convert these torque values to foot pounds, multiply by .07376 (foot pounds = Nm x .07376).



Grade 2 Steel
Tensile Strength
74,000 lb., ¼-½ in.
60,000 lb., ¾-½ in.



Grade 5 Steel
Tensile Strength
120,000 lb., ¼-1 in.
105,000 lb., 1-½ in.



Grade 8 Steel
Tensile Strength
150,000 lb., ¼-½ in.

Coarse, NC, UNC, U.S.S. Thread												
Fastener Thread Size	Proof Load (lb.)	Torque (lb. ft.)			Proof Load (lb.)	Torque (lb. ft.)			Proof Load (lb.)	Torque (lb. ft.)		
		Unplated	Plated	Lubricated		Unplated	Plated	Lubricated		Unplated	Plated	Lubricated
¼-20	1,750	7	5	4	2,700	11	8	7	3,810	16	12	10
5/16-18	2,880	15	11	9	4,450	23	17	14	6,290	33	25	20
3/8-16	4,260	27	20	16	6,580	41	31	25	9,290	58	44	35
7/16-14	5,840	43	32	26	9,030	66	49	40	12,750	93	70	56
1/2-13	7,800	65	49	39	12,060	101	75	60	17,020	142	106	85
9/16-12	10,000	94	70	56	15,460	145	109	87	21,830	205	153	123
5/8-11	12,430	129	97	78	19,200	200	150	120	27,120	283	212	170
¾-10	18,390	230	172	138	28,420	355	266	213	40,130	502	376	301
7/8-9	15,230	222	167	133	39,240	572	429	343	55,400	808	606	485
1-8	19,980	333	250	200	51,480	585	644	515	72,680	1,211	909	727
1 1/8-7	25,180	472	354	283	64,870	1,216	912	730	91,590	1,717	1,288	1,030
1 1/4-7	31,980	666	500	400	82,370	1,716	1,287	1,030	116,290	2,423	1,817	1,454
1 3/8-6	38,110	873	655	524	98,160	2,250	1,687	1,350	138,580	3,176	2,382	1,905
1 1/2-6	46,370	1,159	869	696	119,440	2,986	2,240	1,792	168,630	4,216	3,162	2,529
Fine, NF, SAE, UNF Thread												
¼-28	2,000	8	6	5	3,090	13	10	8	4,360	18	14	11
5/16-24	3,190	17	12	10	4,930	26	19	15	6,980	36	27	22
3/8-24	4,830	30	23	18	7,460	47	35	28	10,530	66	49	39
7/16-20	6,530	48	36	29	10,090	74	55	44	14,240	104	78	62
1/2-20	8,790	73	55	44	13,590	113	85	68	19,190	160	120	96
9/16-18	11,160	105	78	63	17,250	162	121	97	24,350	228	171	137
5/8-18	14,080	147	110	88	21,750	227	170	136	30,710	320	240	192
¾-16	20,510	256	192	154	31,700	396	297	238	44,750	559	420	336
7/8-14	16,810	245	184	147	43,300	631	474	379	61,130	891	669	535
1-14	21,880	365	274	219	56,350	939	704	564	79,560	1,326	995	796
1 1/8-12	28,230	529	397	318	72,730	1,364	1,023	818	102,680	1,925	1,444	1,155
1 1/4-12	35,400	738	553	443	91,190	1,900	1,425	1,140	128,750	2,682	2,012	1,609
1 3/8-12	43,380	994	746	596	111,740	2,561	1,921	1,536	157,760	3,615	2,712	2,169
1 1/2-12	52,170	1,304	978	783	134,380	3,360	2,520	2,016	189,720	4,743	3,557	2,846

The above tables are only intended to be a general use guide for the correct use of fasteners. Due to variables such as plating materials, plating thickness, torque wrench calibration tolerances, and manipulation errors of a torque wrench, the information in the chart above is provided as reference only.

Fastener Terms

Alloy: A high-strength steel possessing metallic properties and consisting of two or more elements, at least one of which must be a metal.

Annealing: A heat-treatment process of relatively slow cooling after holding the material at the annealing temperature for one hour for each inch of the maximum section being treated.

ANSI: American National Standards Institute.

ASME: American Society of Mechanical Engineers.

ASTM: American Society of Testing and Materials.

Bolt: An external threaded fastener normally tightened or released by torquing a nut, and designed to hold components together.

Cap screw: An externally threaded fastener normally used in a tapped or blind hole to hold components together; distinguished from bolts by a washer face on the underside of the head and a header point.

Carbon steel: Any steel made by combining carbon with iron. The amount of carbon, expressed in a percent, determines whether a steel is low, medium, or high carbon.

Case harden: Hardening a ferrous alloy so that the outer portion is made substantially harder than the inner portion.

Clamping force: The amount of tension force created to hold two or more pieces together when a fastener is tightened. To prevent failure due to loosening, overloading, or fatigue, the clamping force produced must be greater than the external forces applied to that assembly. Also defined as “preload.”

Countersunk head: A screw head that is beveled on the underside to fit a flaring hole.

Ductility: A property of flexibility in solid materials that enables metals to be extended or over-drawn by tension without fracture or separation.

Elastic limit: The maximum stress that can be applied to a fastener while still allowing it to regain its original dimensions after removal, or that can be applied with no significant measurable aftereffects. Once this value has been exceeded, the fastener becomes permanently elongated and will not return to its original dimensions.

Elongation: The stretching of a cap screw. Every cap screw stretches or elongates when subjected to a load and behaves similar to a rubber band. When a rubber band is stretched over an object, the force generated by the rubber band wanting to return to its original length gives it

its holding ability.

Fillet: The small radius or curve that connects the underside of the bolt head to the shank; increases the strength of the intersection of the two surfaces and reduces stress concentrations.

Galvanizing: The process of making a fastener more corrosion resistant by coating, or hot-dipping the metal with zinc.

Header point: A reduction at the threaded end of a fastener, designed to facilitate starting in tapped holes.

Heat-treating: Heating and cooling a metal at certain intervals to obtain specific conditions or properties.

Hexagon head: Flat top surface of the bolt with six sides and a flat-bearing surface.

IFI: Industrial Fasteners Institute.

JIS: Japanese Industrial Standard.

Major diameter: Largest diameter of a screw thread; the distance across the crest or top of the threads on a bolt.

Metric: A standard of measurement based on the meter; the dominant system of measurement in all countries except the United States.

Minor diameter: Smallest diameter of a screw thread; the distance across the base or root of the bolt thread.

Nonferrous: An element or material not containing iron; e.g. brass, aluminum, copper.

Oval head: Rounded top surface and conical bearing surface with an additional 80-degree angle.

Pan head: Flat top surface rounded into cylindrical sides and a flat-bearing surface.

Pitch: The number of threads per inch of a threaded fastener length, expressed as threads per inch (TPI). The pitch of one thread is the distance that a nut would advance on a bolt when turned one full turn. In metrics, the pitch is determined by measuring the distance between the crest of one thread and the adjacent thread, expressed in millimeters (mm).

Pitch diameter: The distance halfway between the major and minor diameters.

Point: The chamfer on the threaded end of a bolt permitting easier starting of a nut.

Preload: See “clamping force.”

Proof load: The load, just under the yield strength, that can be applied to a bolt without causing permanent set greater than 0.0005 inch; the maximum safe load that the bolt can support. Torque values are established taking proof load into consideration.

Quenching: Rapid cooling of a heated metal via contact with liquids, solids, or gases.

Reduction of area: The percentage of loss of cross-sectional area that occurs when steel has been stretched past its elastic limit and up to its breaking point. In cap screws, this is sometimes referred to as “necking out” or “dog-bone” effect.

Root: The deepest point of the V-notch forming the groove of a thread; a well-designed fastener should incorporate a radius or rounded root.

SAE: Society of Automotive Engineers.

Shear: The force exerted 90 degrees to the centerline or length of the bolt which tends to cut the bolt into two or more pieces.

Shear strength: The amount of force, usually expressed in psi, required to shear the bolt into two pieces; referred to as “single shear” with a typical value of about 67-percent tensile strength. “Double shear,” in which shearing forces are applied at two points along the shank of the body, would cut the bolt into three pieces; usually about 175 percent of tensile strength.

Stainless steel: An alloy steel containing at least 4-percent chromium that is corrosion and heat resistant; 18-8 stainless steel contains 18-percent chromium and 8-percent nickel and resists most corrosive agents in industrial applications. Commonly used in applications where food, drugs, medicines, liquids, or any material for human consumption may come into contact with the fastener; this is also the predominant fastener type used in marine applications.

Stud: A rod threaded at both ends with a center shank or continuous thread.

Tapped hole: A threaded or “blind” hole where nuts are not used.

Tempering: A secondary heat-treatment process used on already hardened alloy steels in order to reduce hardness and brittleness and increase toughness. In general, as hardness is reduced so is tensile strength, but ductility is raised.

Tensile strength: The load in pounds per square inch (psi) required to cause failure in tension (stretch). The tensile strength of a given bolt is obtained by multiplying the psi tensile strength of the stressed area. In metrics, the value is expressed in Mega Pascal (Mpa), equal to 145 psi.

Tension: The load that is applied in line with the centerline of the bolt that stretches it.

Thread length: The standard formula for determining the length of thread on a cap screw, twice the diameter of the cap screw plus $\frac{1}{4}$ inch. For cap screws longer than 6 inches, add an additional $\frac{1}{4}$ inch. In shorter sizes, where the standard formula for thread length is as long or longer than the length of the shank, the cap screws will be threaded to the head.

Torque: The amount of twisting force applied to the nut or the head of the bolt. Twelve inch-pounds or one foot-pound of torque would be created by exerting a one-point pull on the point of a wrench handle exactly 12 inches from the center of the bolt.

Torsion: Radial force applied to the head or the threads of a bolt when a nut is being tightened; applies a twisting force to the bolt due to the frictional forces encountered by the mating of the threads as the bolt stretches.

UNC: Unified National Coarse thread series previously known as USS.

UNF: Unified National Fine thread series previously known as SAE.

Washer face: A circular boss on the underside of the bolt head or the surface of a nut that acts as a bearing surface for the clamped materials; also prevents the sharp hex edges from digging into the work surface, causing an increase in friction.

Wrench pad: The flat surfaces on a fastener head designed to permit an externally applied wrench to grip the sides of the head.

Yield point: The stress (expressed in psi) necessary to produce an elongation underload of 5 percent of the product’s original length.

Yield strength: The load (usually expressed in psi) necessary to stretch a fastener to the point where, after the load is removed, will not return to its previous length.

Conversion Chart

Fractions	Decimals	Millimeters
$\frac{1}{64}$.0156	0.396
$\frac{1}{32}$.0312	0.793
$\frac{3}{64}$.0468	1.190
$\frac{1}{16}$.0625	1.587
$\frac{5}{64}$.0781	1.984
$\frac{3}{32}$.0937	2.381
$\frac{7}{64}$.1093	2.778
$\frac{1}{8}$.1250	3.175
$\frac{9}{64}$.1406	3.571
$\frac{5}{32}$.1562	3.968
$\frac{11}{64}$.1718	4.365
$\frac{3}{16}$.1875	4.762
$\frac{13}{64}$.2031	5.159
$\frac{7}{32}$.2187	5.556
$\frac{15}{64}$.2343	5.953
$\frac{1}{4}$.2500	6.350
$\frac{17}{64}$.2656	6.746
$\frac{9}{32}$.2812	7.143
$\frac{19}{64}$.2968	7.540
$\frac{5}{16}$.3125	7.937
$\frac{21}{64}$.3281	8.334
$\frac{11}{32}$.3437	8.731
$\frac{23}{64}$.3593	9.128
$\frac{3}{8}$.3750	9.525
$\frac{25}{64}$.3906	9.921
$\frac{13}{32}$.4062	10.318
$\frac{27}{64}$.4218	10.715
$\frac{7}{16}$.4375	11.112
$\frac{29}{64}$.4531	11.509
$\frac{15}{32}$.4687	11.906
$\frac{31}{64}$.4843	12.303
$\frac{1}{2}$.5000	12.700

Fractions	Decimals	Millimeters
$\frac{33}{64}$.5156	13.096
$\frac{17}{32}$.5312	13.493
$\frac{35}{64}$.5468	13.890
$\frac{9}{16}$.5625	14.287
$\frac{37}{64}$.5781	14.684
$\frac{19}{32}$.5937	15.081
$\frac{39}{64}$.6093	15.478
$\frac{5}{8}$.6250	15.875
$\frac{41}{64}$.6406	16.271
$\frac{21}{32}$.6562	16.668
$\frac{43}{64}$.6718	17.065
$\frac{11}{16}$.6875	17.462
$\frac{45}{64}$.7031	17.859
$\frac{23}{32}$.7187	18.256
$\frac{47}{64}$.7343	18.653
$\frac{3}{4}$.7500	19.050
$\frac{49}{64}$.7656	19.446
$\frac{25}{32}$.7812	19.843
$\frac{51}{64}$.7968	20.240
$\frac{13}{16}$.8125	20.637
$\frac{53}{64}$.8281	21.034
$\frac{27}{32}$.8437	21.431
$\frac{55}{64}$.8593	21.828
$\frac{7}{8}$.8750	22.225
$\frac{57}{64}$.8906	22.621
$\frac{29}{32}$.9062	23.018
$\frac{59}{64}$.9218	23.415
$\frac{15}{16}$.9375	23.812
$\frac{61}{64}$.9531	24.209
$\frac{31}{32}$.9687	24.606
$\frac{63}{64}$.9843	25.003
1	1.000	25.400

Warranty on bulk hardware

Procedures for returns on defective Midwest Fasteners products:

1. All Midwest Fastener products are guaranteed against defects in workmanship and materials.
2. All alleged defects should be returned to Midwest Fasteners with a Return Goods Authorization (RGA) containing the part numbers, quantities, and the nature of the defect.

Please return freight prepaid to:

Midwest Fastener Corporation
9031 Shaver Road
Kalamazoo, MI 49024-6164

3. For an RGA number, contact the Customer Service Department at **1.800.444.7313** or request an RGA number by following the established procedure for Vendor Direct Return Goods found on Pathways at the following location: Parts/Forms/Vendor Return Goods Authorization.

Contacts

For Return Authorization: Customer Service Manager
1.800.444.7313

Shipping Address: Midwest Fastener Corporation
9031 Shaver Road
Kalamazoo, MI 49024-6164

Mailing Address: Midwest Fastener Corporation
9031 Shaver Road
Kalamazoo, MI 49024-6164



JOHN DEERE