
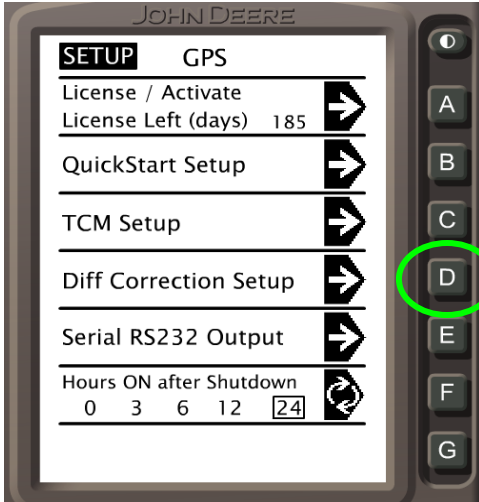


# Changing StarFire Frequency on Original GreenStar Display

Step 1: Push the  (SETUP) button

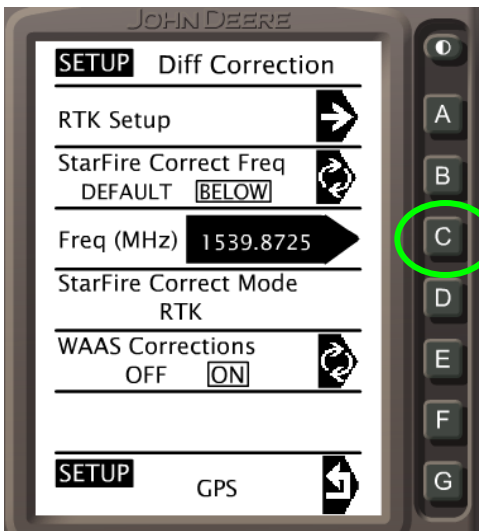
Step 2: Select the line that reads  (It may also read "StarFire Receiver" or "StarFire 3000")



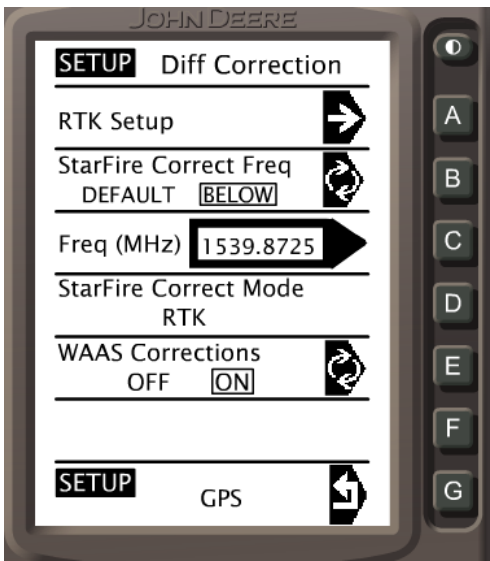
Step 3: Push letter "D" to go into "Diff Correction Setup"



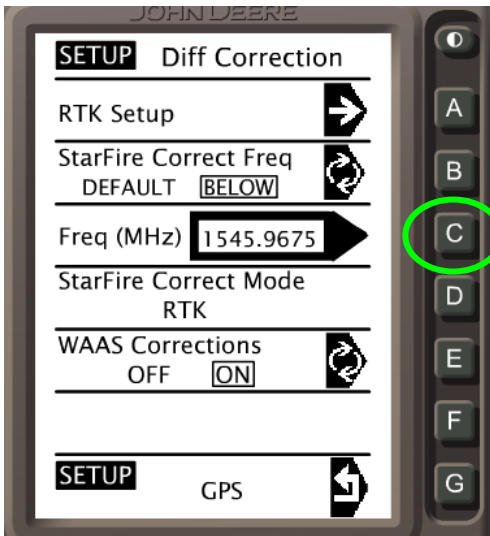
Step 4: Push letter "B" so that the word "BELOW" is highlighted.



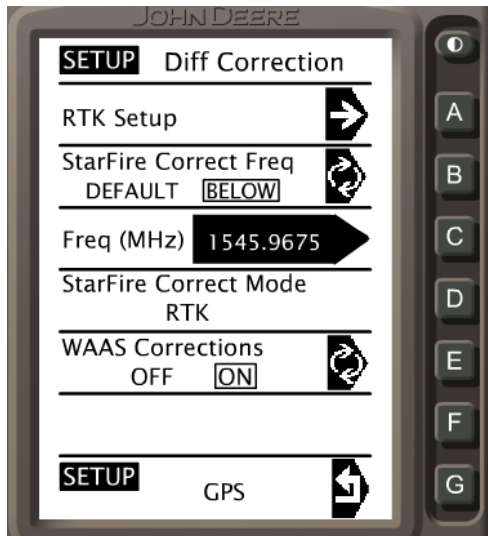
Step 5: Push letter "C" so that the "Freq (MHz)" option is highlighted.



Step 6: Once the frequency number is highlighted like the picture to the left, use the number pad to enter frequency number "1545.9675".




Step 7: Once the frequency number is entered like the picture to the left, push letter "C" to apply.



Once complete, the display should look like the one to the left.



Last Step: Push  (RUN) and the GPS system should be ready to go!